

*The*

# DELTA SIG

O F D E L T A S I G M A P I



*University of Pittsburgh, Pittsburgh, Pennsylvania*

**PROFESSIONAL BUSINESS ADMINISTRATION FRATERNITY**

FOUNDED 1907

**MARCH 1963**



THE GUGGENHEIM Memorial Library is located on a nine acre estate at Monmouth College.

Delta Sigma Beta held several dinner-dances during the college year, and also entered a rocketship in the float parade. From their efforts in developing a well rounded program of professional and social activities, the members of Delta Sigma Beta firmly established themselves at Monmouth College.

The members of Delta Sigma Beta are confident that through the continued efforts and guidance of Dr. William G. Van Note, president of Monmouth College; Dr. Kenneth C. Streibig, dean of administration; Dr. George W. Neel, dean of faculty; Mr. Irving J. Shapiro, registrar; Mr. Robert Hogg, director of student activities; Mr. Edward N. Emmons, director of placement; and Mr. Alfred K. Brown, faculty advisor and member of Delta Sigma Pi, that the organization will continue to operate in complete accord with the standards established by Delta Sigma Pi.

On October 27, 1962, the goal of Delta Sigma Beta members was achieved as the following undergraduates and faculty became charter members of Epsilon Pi Chapter of Delta Sigma Pi: Melvyn L. Benson, William H. Burket, Walter L. Church, Jr., William M. Dambach, Jeffrey C. Herold, Roger T. Jensen, John P. Knieriem, William Lauth, Harrold Manger, John J. Martini, John E. Matthews, Jr., Edward Nesbitt, Joseph W. O'Neill, Bruce Prebut, Clifford P. Reeves, David S. Robinson, Joel Rothbart, Charles F.

Shay, Leon E. Smock, George C. Truncel-lito, Jr., Vincent J. Vanacore, Jr., Peter F. Van Iderstine, Shayne D. Weir, and Karl Wohl. Faculty initiates were: Robert M. Benham, William J. Brennan, Edward

N. Emmons, Galen T. Goewey, William E. Huntley, Kenneth D. Loeffler, Sidney Nemetz, Kenneth C. Streibig, Mario A. Taddeo, Robert J. Tompa, and John A. Trathen.

## 24th Grand Chapter Congress

### AWAITING YOU:

At the beautiful Bedford Springs Hotel your day will be filled with most informative and interesting fraternal meetings, and a chance to:

- golf on the 18 hole championship course,
- swim in either the outdoor or indoor pools,
- ride one of the many horses in the hotel's stables,
- play tennis on the hotel's courts,
- dance nightly in the Crystal Room of the hotel,
- enjoy other games such as billiards, ping pong, croquet, badminton, horseshoes, and shuffleboard, all of which are obtainable on the hotel grounds.

### Advance Reservation DELTA SIGMA PI 24th GRAND CHAPTER CONGRESS Bedford Springs Hotel, Bedford, Pa. August 19-22, 1963

To The Central Office of  
Delta Sigma Pi  
330 S. Campus Avenue  
Oxford, Ohio

Dear Brothers:

I am enclosing my check for \$..... (\$10.00 per person) to cover the Registration Fee of the 24th Grand Chapter Congress and to guarantee my room reservations at the Bedford Springs Hotel.

Name ..... Chapter .....

Address .....

City and State .....

Others for whom I am submitting Registration Fees are:

Name & Address .....

.....

.....

.....

.....

Note: Hotel Reservation Forms will be sent to you upon receipt of this Advance Reservation Form at The Central Office.

# We Are Ready for Your Reservations!

ALL OF THE PLANS for the 24th Grand Chapter Congress of Delta Sigma Pi are complete and we are now ready to accept your reservations. Full information about the convention and a form for making your reservations follow:

## THE PLACE:

The beautiful mountain resort, the Bedford Springs Hotel, at Bedford, Pennsylvania is the location of this Grand Chapter Congress. Bedford is six miles from the Bedford outlet of the Pennsylvania Turnpike and is 100 miles east of Pittsburgh and 200 miles west of Philadelphia.

## THE TIME:

The height of the vacation season has been selected, Monday through Thursday, August 19-22, 1963. It is anticipated that all delegates will arrive following the noon hour on Monday, August 19, in time for the first business session that will begin at 3:30 P.M., and depart on Thursday, August 22, after the Farewell Luncheon being held at 12:00 Noon. This will provide three full days of business, fellowship and recreation.

## THE PROGRAM:

Monday, August 19, 1963

Registration  
Opening Business Session  
Dinner  
Reception  
Regional Gatherings

Tuesday, August 20, 1963

Breakfast  
Chapter and Alumni Club Panels  
Luncheon  
Recreation  
Stag Party & Yellow Dog Initiation  
Doe Party and Pink Poodle Initiation

Wednesday, August 21, 1963

Breakfast  
Chapter and Alumni Club Panels  
Luncheon  
Regional Round Table Meetings  
Initiation of Honorary Member-at-Large  
Grand Chapter Congress Banquet

Thursday, August 22, 1963

Breakfast  
Final Business Session  
Farewell Luncheon

## THE COST:

As usual, there will be a Registration Fee of \$10.00 per person payable at the time that you make your Advance Reservation. This is a separate fee to cover extra activities of the Grand Chapter Congress and DOES NOT apply on the following room and meal cost:

Room, meals, tax, tips—

Single \$22.60 per day (3 Day Convention \$67.80)

Double \$19.50 per day—per person (3 Day Convention \$58.50 per person)

Triple \$17.20 per day—per person (3 Day Convention \$51.60 per person)

Children occupying same room as parents using roll-away beds:

Under 10 years of age—\$9.10 per day

Over 10 years of age—\$13.30 per day

Family suite (two rooms—one bath) \$17.20 per day—per person regardless of age.

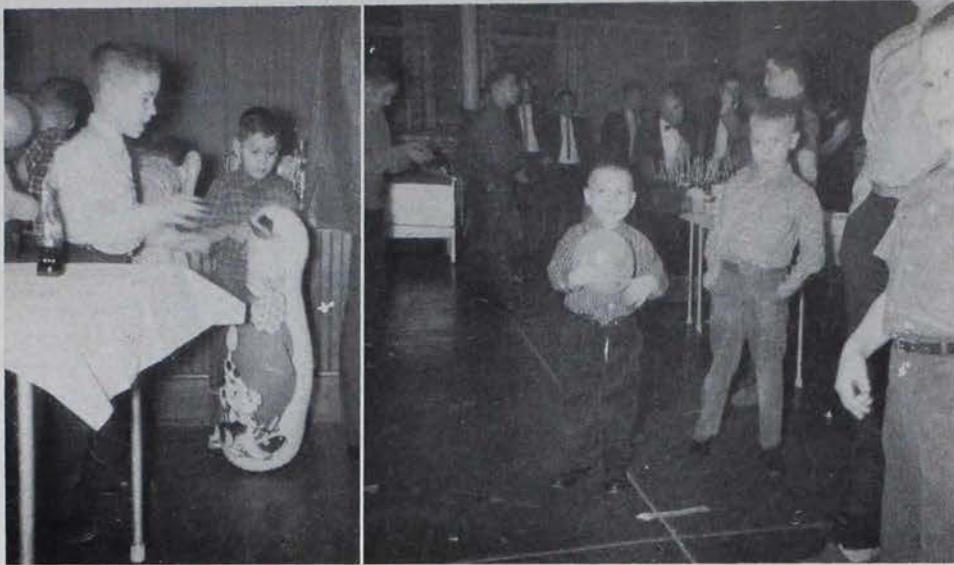
## MAKE RESERVATION NOW:

Our ability to plan for your utmost enjoyment is contingent upon our knowing just how many Deltasigs and their families will be in attendance. Accordingly, the sooner everyone makes his or her Advance Reservation, the better chance we have of having everything in readiness for a superb convention.

Make your Advance Reservation today using the form that follows. Please be sure and include your \$10.00 Registration Fee as no accommodations will be guaranteed without it. Should you find it impossible to attend the convention at a later date the \$10.00 Advance Registration Fee will be refunded, provided that you notify us at least three weeks prior to the Grand Chapter Congress. Hotel reservation forms will be sent upon receipt of the Advance Reservation Form and Registration Fee at The Central Office.



THIS ATTRACTIVE OUTDOOR POOL and the colonial facade of the Bedford Springs Hotel will be the first things to meet the eyes of the Deltasigs participating in the 24th Grand Chapter Congress in August.



JOY was everywhere as the children picked up their toys and refreshments of the Alpha Theta Chapter Christmas Party for orphans in Cincinnati, Ohio.

The program began with Bob Schreve of WCPO TV, the idol of Cincinnati children, as he amused the children with his zany antics. Mr. Schreve then presented a movie by those ambassadors of laughter—"The Three Stooges." For a full hour, laughter prevailed and for that same length of time every child in attendance was transported from the same everyday surroundings to that mystical land somewhere over the rainbow. As the movie ended, everyone in attendance knew that this truly, *tis the season of great joy.*

Like all normal children having fun, it took its toll, for every child's appetite had increased to a point whereby when the refreshments were served every child made that momentous decision to overeat. With cupcakes by the hundreds—which were furnished by mothers, wives, sisters, and girl friends of actives and alumni—staring them in the face, who wouldn't overeat a little? Coca-cola was consumed like it was going out of style. But when all was gone, the children had changed very little except that their faces possessed a slight tint of green.

Now came the big moment, the examination of Santa's gifts. Footballs, basketballs, baseballs, dolls, games, and clothing of all shapes, colors, and sizes were cluttering the floor. A Zenith portable stereo and a couple of radios were also

*(Continued on page 76)*

## Santa Is a Business Man

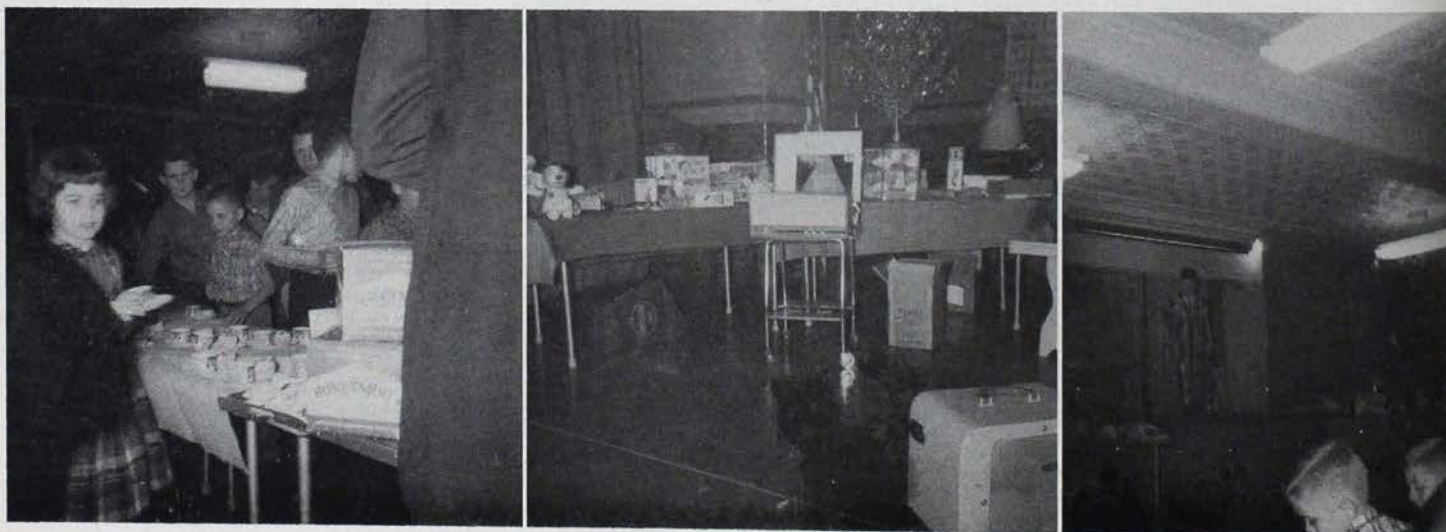
*"Yes there is a Santa Claus!"*

We at Alpha Theta Chapter at Cincinnati set out to prove the above statement for the benefit of all the children at the St. Aloysius Orphanage. On the first day of December, we began contacting businessmen in the Greater Cincinnati area to solicit donations so that the guardian of Christmas at the orphanage would not be forgotten, for we all know that Christmas is not for children; it is children. Nothing can replace the excitement, the surprise, or the happiness expressed on a child's face when he finds that Santa Claus has been there and lightened his load.

On January 4, Santa arrived at the orphanage, in the form of 27 actives and alumni of Alpha Theta Chapter and the

sentiment expressed in every donation of Cincinnati businessmen. Everything was now ready. The doors were then swung open and in came hundreds of curious children. Their ages ranged from three to fifteen, and they all had one thing in common which was the substitution of a family of hundreds for one of conventional size. Their faces could easily be read: "What's going on?", "Santa Came!", "What did he leave us?", "What did he leave me?", "Is it true?", and "Boy I'm happy!" As they slowly settled back to reality of the situation, the program began.

CHRISTMAS DELTASIG STYLE came to a Cincinnati orphanage in December, courtesy Alpha Theta Chapter. *Left:* the kids help themselves to ice cream and cup cakes. *Center:* tables full of toys, a new stereo and TV await the kids. *Right:* Bob Shreve, a local TV comic, was on hand to greet the kids.



# Memphis State Occupies New Business Administration Building

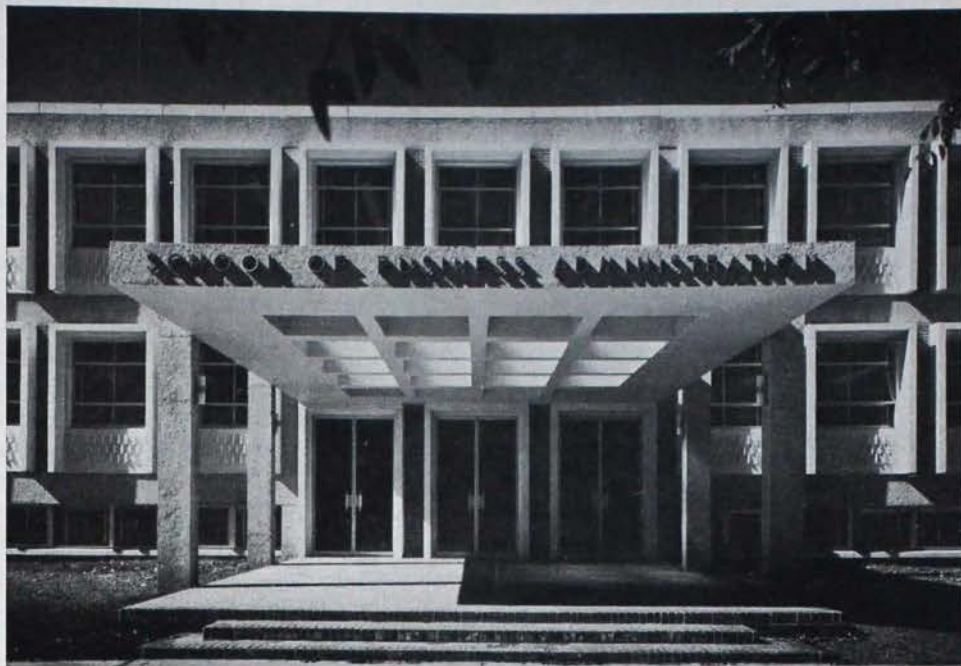
ON THE Memphis State University campus at Memphis, Tennessee, the School of Business Administration occupied its new building for the first time in September 1962.

The half-million dollar, air-conditioned structure, with approximately \$100,000 in new furniture and equipment, represents the most efficient utilization of the funds available to maximize classroom and office space. The architect, Robert Lee Browne, performed miracles in designing the building to be as attractive, inside and outside, as the limited budget permitted. The building is the first of several planned buildings to form a mall in front of the main Administration Building.

The outside is largely pre-cast forms. The inside is highlighted by colorful ceramic tile walls in the hall, orange and yellow modern-formed Herman Mueller chairs, and desks and tables, designed by the architect, in modern styling with black steel frames and white formica tops.

Numerous objectives of the School of Business Administration are now being achieved more rapidly. The 187-seat auditorium is in use constantly by professional groups for conferences and seminars. Many professional groups, with educational programs of their own, hold classes at the School and utilize its faculty.

The School of Business Administration now has about 1,850 students enrolled, of which approximately 100 are graduate students.



THIS BEAUTIFUL STRUCTURE is the new home of the School of Business Administration at Memphis State University.

The Bureau of Business Research, a function of the School, will begin operation in the new building on January 1, 1963, financed by the city and county governments.

Plans are being made to acquire a computer for use in the Bureau and incorporation of its use in a number of courses. Instruction by television is provided in several courses each semester, both through a local commercial station and the campus educational station.

Dr. H. J. Markle is the Dean of the School of Business Administration, which has five departments: accountancy, economics and finance, management, marketing, and secretarial science and office management.

Offices (28) are all located on the first floor, along with the Bureau of Business Research. This is designed to reduce traffic flow by the offices. The second floor is made up of general classrooms and special-designed classrooms for the marketing students. The third floor provides the accounting and secretarial laboratories, with 18-foot tables and electrical connections for each machine on the table top. At each end of the second and third floors are classrooms with folding, sound-proof doors, thus, there could be four classrooms of seventy-two students each, or eight classrooms of thirty-six students each. This flexibility has been useful.

Two small (15 person) conference rooms are provided on the third floor and two small rooms for the six student organizations affiliated with the school.

The Gamma Zeta Chapter of Delta Sigma Pi was established on the Memphis State Campus in 1949. It has scored 100,000 points the last six years and has initiated over 400 members.



# Maverickism — A New Business Value?

By George S. Odiorne, Beta Rho Chapter  
Director Bureau of Industrial Relations  
University of Michigan

WELL-INTENTIONED junior and middle managers may be puzzled these days if they are listening to their top managements quite carefully. On one hand, chief executives, chairmen of boards, company presidents, and vice-presidents are denouncing "conformity," reviling the "organization man" in business, and calling for more mavericks on the payroll in staff and professional positions. On the other hand, their subordinate executives are permitted to hire well-adjusted men, to produce organization men, and to promulgate policies which encourage conformity.

For some twenty or more years the question "What kind of talent do we want?" has been answered in most large companies in favor of the organization man. Supervisory practice, personnel policy, and executive development programs have stressed the need for the well-rounded man, the team player, the fellow who could keep his head down.

In the light of the newly discovered top management need for the individualist, the non-conformist, the maverick in business, does this mean that management development programs pertaining to high talent manpower are in for a drastic revision in our largest and most important companies?

Presuming that these utterances from chief executives are premeditated statements which could preface some drastic changes in emphasis in personnel management, it might be appropriate to look more closely at two things. First, we might look more closely at how this new top management viewpoint came into being, and what they are saying about conformity in business. Secondly, we might look at some of the existing widespread personnel programs which seem to be inconsistent with the new management viewpoint.

Out of this comparison we may induce some guides for the future in recruiting, selection, testing, job assignment, and training of talented employees.

## The Attack upon Conformity in Business

"How can we maintain the identity of the individual in a world which increasingly must turn to the group or the organization for progress?"

This question is asked by Crawford Greenewalt, President of DuPont, in his recent book, *The Uncommon Man*. As chief executive of one of America's leading firms, Mr. Greenewalt's concern is important by itself. As part of a larger body of dissent over the focus of administrative policy and practice it has further implications. This larger body of dissent is not limited to presidents, nor was it begun with them.

This distaste for conformity isn't exactly modern in society generally. To go back no further than is necessary, we can note that Emerson declared that "to call oneself a man one must be a non-conformist." Thoreau, who recently had a resurgence because of attention to excessive conformity, likewise advocated non-conformity as the path to greatness for America.

Probably the most significant book of the past decade on the subject is one written by David Riesman and his associates in 1950, entitled *The Lonely Crowd*. This exposition which is more widely quoted than read in full, is a study of the American Character in our times. Its thesis is a simple one. Riesman states that we have passed through the age when tradition—or the dead hand of the past—has governed our actions. He states further that we in America have also passed through the age when we were guided by our consciences and inner convictions as individuals. We are now, he declares, "other-directed" in our values. By this he means that we no longer look inside ourselves for guidance from our consciences or personal intellects. Rather, we are other-directed because we look to others—to the group—for the values which guide our actions. Our basic philosophy of individualism, which Riesman described as that of the "inner-directed middle class Protestant," gave way to the need for

something more important, the affection of a contemporary jury of one's peers. Needless to say, Riesman did not see this as a particularly heartening trend. More important, Riesman focused the attentions of critics and intellectuals upon the problem of conformity, and he was followed by a great wave of books denouncing this demand of great organizations upon their members.

Perhaps the most popular of these was a book called *The Organization Man* by William H. Whyte, of *Fortune* magazine. Whyte denounced the decline of the Protestant ethic explained by Riesman, and deplored the growth of a social ethic in its place. If you are one of the millions who have read this book, you know the harsh things Mr. Whyte has said about the tools of the personnel trade, the human relations training which causes people to be well-adjusted, and the pitfalls and malevolent features of psychological testing of personality. The enemy here—in Whyte's version—is not an evil person or tyrant; it is the organization itself.

In addition to these two works, so many other writings have appeared that it is almost impossible to keep up with them. Chris Argyris of Yale, in his most recent book, *Personality and Organization*, suggests that organization as it is formally constituted in most companies creates dependent and passive people. Vance Packard in his book, *The Hidden Persuaders*, implies that the motivation researchers are using science to manipulate us, both as employees and as consumers of the goods that corporations produce.

To discuss the image of the executive and of the company which has emerged in the fiction about business in recent years would be the subject of another full article. Tom Rath in *The Man in the Gray Flannel Suit*, or Willis Wayde from the John Marquand novel *Sincerely Willis Wayde* are fictional documentations of what the social psychologist has spelled out in more pedantic form.

## How to Create an Organization Man

Perhaps a pertinent question which can be asked in the light of these criticisms is "How did we get into this situation?" One answer might be to reconstruct step-by-step the process by which an organization man is created. These steps are planned by the present organization, and includes managers and staff people at every level and functional position in their execution.

Here's the process:

*Step One.* Select a group of subjects, carefully screened through depth interviews and personality tests, to weed out any individualistic, wild-eyed mavericks who might upset the boat. During their training, put them on a "cultural island" with a lot of others who think everyone else there is important, and who can put them into coventry if they start thinking for themselves as individuals.

*Step Two.* Make it clear from the beginning of their training that one of the rules is that it is extremely important that everyone must deeply desire to be an accepted member of the group. No lone wolf action is permitted. Any radicalism will result in expulsion from the group.

*Step Three.* Make it plain that problems aren't to be solved in solitude, but through group action and group thinking. The power of suggestion, brainstorming, and consultative and participative action will prevail. Our cadets are to be told that any question can be answered by the pooled intelligence of the group.

*Step Four.* Build up a climate where everyone is permissive. This means you set up a sort of psychological nudist colony in which people with remaining traces of individuality confess their sins before the others and ask their frank and brutal criticism without defensiveness. Defensiveness is said to be bad. It's part of the training of a good organization man that he be willing to take a real pasting from everyone in his group without flinching. It's a verbal form of the "slam book" which we used to circulate in high school in which our youthful associates could write the nastiest things about us they thought. This is said to develop character, and tolerance to group tyranny.

*Step Five.* Get everyone in line with group standards. Don't let anyone hang onto any archaic standards such as his father's or those his conscience, intellect, or education tell him are right. The real trick is for him to learn what ideas the

group thinks is right, then conform to those while he learns to suppress his own. If he happens to feel that the group is badly in need of a boot in the rear and some close-order-drill from a tough top-kick, he'd better purge himself of those anti-organization-man thoughts pronto; otherwise, the group will put him in the deep freeze.

*Step Six.* Adequate lessons in the science of group behavior are very important. Every organization man must become a deep scholar of group methods. Through such study he becomes more deeply ingrained in the method and, thus, applies it better. This includes not only conference leadership training, but "conferencemanship" and "committeemanship" as well. This entails both formal training and plenty of practice through attending conferences and committee meetings.

Follow these six tested steps—personal recruiting, selection, placement, and training—and you have an organization man ready for installation in your plant or office. He will fit into any slot, will serve on all your committees with vast tolerance and enjoyment, and will never be pig-headed, intractable, obstinate; nor will he be original, imaginative, creative, or critical.

In all of this happy system, however, there still remains one discordant note. *Top managers apparently don't want such men.* Melvin H. Baker, chairman of National Gypsum, terms conformism as "our greatest peril." The clarion call for individualism has been made by numerous other company presidents. Mr. Horace Basset, President of Calumet and Hecla, in a recent issue of *Personnel Journal*, calls for a turning back on the soft human relations approach of the past twenty years. Paul Getty, oil executive, in a recent issue of *Look* magazine, has some harsh things to say about these "human relations" practices. Louis Wolfson, trader in companies and chairman of Merritt, Chapman and Scott, indicated recently that conformity is the most serious problem ahead for the management of personnel. Ralph Cordiner, Chairman of General Electric, has added his voice to this chorus as well as Roger Blough of United States Steel.

### What Does This Contradiction in Goals Mean?

A careful scrutiny of the opinions of top management as indicated by their

statements in speeches, and of the practice in their companies indicates some inconsistencies. To me this means that one of two things are true:

1. The statements of top management aren't premeditated statements. They are prepared either by them or for them because the subject matter and opinions seem innocuous enough. They really don't mean that their subordinate executives should change what they are doing, or . . .

2. There must be some radical changes in management practice during the next ten years which will modify present recruiting, selection, training, and supervisory procedures in a most fundamental manner. The new goal must be to find and create able dissenters for their companies and establish procedures to move these mavericks into positions of influence in the organization.

There is some evidence that top executives making speeches or writing articles aren't necessarily issuing directives for the guidance of their own subordinates. The most common example is the statement by top executives urging companies to hire more liberal arts college graduates and eschew the specialist. Yet, there has been little change in industry's demand for engineers, accountants, statisticians, scientists, chemists, and other specially trained people by the representatives of the same companies when they appear at the colleges to recruit seniors.

There is equal evidence that often when the chairman of the board bemoans conformity and the organization man in a speech or article, the practices which create them are being vigorously carried out under his very nose in his own firm. Occasionally he originates such procedures himself by his behavior. Lip service to respectable but unpracticed ideas is fairly common in the executive branch.

The current attempt by Whyte, Baker, Bassett and others to point out the dangers of conformity is probably more firmly rooted, however. There are good reasons of corporate interest for the owner or chairman of a company to add his voice to the cause of individuality in business. Many of the theorists who have provided the intellectual grist for the executive speeches, and many thoughtful executives themselves are part of a new articulate conservatism which has sprung up in this country in recent years. The objective of this movement is a return to traditional values. It's not surprising

that they now want their subordinate executives to conform to a rediscovered goal of individualism.

### What Changes Are Needed?

The company which is manned by alert managers has undoubtedly already begun switching its signals among the offices occupied by the lesser ranks. Twenty years of hiring and training for conformity hasn't made these people dull to messages emitting from the offices where the brass is situated. The antennae of their "radar sets" have already begun to point up that the Old Man is calling for individualism, for non-conformity, and maverickism. The lesser lights may be counted upon to respond to this faint but clear message. The real problem is this: what is the acceptable mode of behavior for the New Maverick? You may rest assured that it will not extend to punching the Old Man in the nose or stealing his cigars, but will nestle itself closely to the image of maverick behavior that can be induced from what he says and what he approves.

Certainly there will be more "tough talking" about the need for backbone and up-to-date versions of Elbert Hubbard's homilies out of the past. More often, there will be a shrewd attention to the arts of disagreeing and speaking up freely when in the presence of the seniors without actually saying anything intemperate or brutally frank.

Once these superficial arts of adapting outward behavior to the new line of maverickism have been firmly installed, there still remains the basic problems of what the thinking junior or middle manager should do in order to overcome the debilitating effects of too much conformity among high-talent people. It would seem that there are several basic problems which still need some deep thought and adroit planning.

1. There is the necessity of taking a hard look at personnel management practices to be certain that we are hiring the right kinds of people. In this case, the right kind means persons who have a capacity for independent and critical thinking, rather than adaptability.

2. It means that executive development programs must salt their training programs with some firm words against the more sentimental and sloppy forms of leadership behavior.

3. More time and money must be spent in studying the research findings of social

scientists and putting them into application in the firm. More than that, there's a real argument for greatly expanding that research into human behavior in the work place in order that more meaningful material be developed on the relationship between the man and the organization.

4. The special problems of scientific and engineering creativity and productivity must have special treatment in the management of a firm's manpower. It's fruitless to revile these people for their rigidity and individuality when these very qualities are often inextricably tied to their ability to innovate and produce.

5. Most of the lasting effects of the New Maverickism will be through an infusion of individualism into business from the recruits. In some instances, it will accelerate the rise of individualism and maverickism in old hands who have carefully concealed their tendencies in this direction under the regime of sentimental togetherness. The major immediate effect, however, among the experienced bulk of managers and staff will be a new conformity—to a behavior which *looks like* maverickism. There are grounds for skepticism that new values will be forthcoming overnight, however high the rank of the voice that calls for it.

6. The big change to maverickism probably won't happen at all unless the new prophets of individualism begin to behave in a way that makes it crystal clear that no other form of behavior is acceptable for the highly trained professional or managerial employee.

To some, the problem seems to be one of numerical balance. Certainly the pressing need in large organizations isn't for a complete staff of mavericks. Chaos could be the only outcome. The question becomes one of determining how many mavericks a company needs, and where they need them. This is probably a function of the amount of innovation which the company wants and needs. Since this "balance of innovation" can change drastically, it might leave the mavericks as martyrs to a past requirement of the firm.

Even maverickism has its limits, however, and the manager who indiscriminately proposes heterodox behavior for too many people may discover he's done more than a disservice to his organization. Perhaps he's led a number of talented people down a primrose path which is trod only by expendables. Beards can be shaved off and bermuda shorts can be left for use around the home barbecue by the maverick when he senses a change in the way the organization wind is blowing. It's more difficult to change attitudes on such short order, however.

Twenty years of teaching the evils of pigheadedness, autocratic behavior, intractability, and selfishness haven't ended the existence of these qualities in employees of the organization. Until the people who speak in favor of the new individualism begin to pass the new word to their recruiters and lower level managers, there will be no more than a ripple of action to implement the new philosophy.

---

## Santa Is a Business Man

(Continued from page 72)

among Santa's contributions. As each child singled out and examined the gift he liked most of all, we felt a feeling of satisfaction and happiness that was extended to us through the act of giving ourselves.

No one can measure the feelings of everyone in attendance. As for myself, I know I felt a sense of satisfaction with myself, of gratitude to the members of my profession who kindly donated the gifts and of pride for my fraternity which produces such outstanding individuals

who so graciously gave of themselves to ring happiness to others. Upon leaving the orphanage that night we all knew that, "Yes, there is a Santa Claus and there always will be one." For as long as individuals will give one day a year to thoughts of others rather than themselves, Santa will live on. It is also a good feeling to know that Delta Sigma Pi chapters in all corners of the country are also bringing Christmas to similar groups of underprivileged children.—RICHARD HALEY



# Eighteenth Biennial Survey of Universities

## Completed by Delta Sigma Pi

AFTER MANY MONTHS of preparation the Eighteenth Biennial Survey of Universities Offering an Organized Curriculum in Commerce and Business Administration has been completed. Participation by 379 colleges and Universities made this Survey the most extensive ever conducted and compiled by Delta Sigma Pi.

Distribution of the Survey is now being made to all colleges that submitted data, personnel administrators of leading firms throughout the country, officers of Delta Sigma Pi chapters and alumni clubs, and associations interested in schools and colleges of business administration. In total over 6,000 copies will be sent all over the world.

The first Survey was conducted in 1928 and it contained statistics on 89 colleges and universities. This survey included enrollment figures for the college years 1919-20 through 1927-28. In 1919-20 the total enrollment of these 89 colleges was 36,456, or an average of 409 per college. In 1927-28 the total enrollment was 67,496 or an average of 758 students per college. Our present Survey shows an enrollment of 339,884 in both undergraduate and graduate work or an average of approximately 897 students per college.

It is significant to note that our first Survey reported a total of 5,768 degrees granted in business administration, whereas our present survey reports 40,039 bachelor degrees and 7,310 graduate degrees granted. Two years ago, a total of 37,505 bachelors and 6,165 masters and doctors were reported by 372 colleges and universities only 7 less than participated in the present Survey.

We would like to point out that there are quite a few more than 379 colleges and universities offering organized curriculums in commerce and business administration in the United States, Canada, Mexico, and surrounding areas. In order to make the Survey timely, however, we were forced to omit a number of colleges which for some reason or another were unable to return our questionnaire promptly. We sincerely regret this, but we believe that the vast majority of colleges are included and that the Survey

does provide a good picture of the business administration program that is being offered today in the United States and surrounding countries.

This Survey was conducted by the staff of The Central Office of Delta Sigma Pi and was financed by the Educational Foundation of Delta Sigma Pi and is one of the many projects that it is undertaking in the field of business education.

CODE USED IN SURVEY	DESIGNATION OF SCHOOL, COLLEGE, OR DEPARTMENT
ATSoFBA	Amos Tuck School of Business Administration
CMC	Claremont Men's College
CofAS&BA	College of Applied Science & Business Administration
CofB	College of Business
CofB&SS	College of Business and Social Sciences
CofBA	College of Business Administration
CofBA&I	College of Business Administration and Industry
CofB&PA	College of Business and Public Administration
CofB&PS	College of Business & Public Service
CofC&SS	College of Commerce & Social Sciences
CofC	College of Commerce
CofC&A	College of Commerce & Administration
CofC&BA	College of Commerce & Business Administration
CofC&F	College of Commerce & Finance
CofC&D	College of Commerce & Industry
CofF&DC	College of Foreign & Domestic Commerce
DofA&BA	Department of Accounting & Business Administration
DofBA	Department of Business Administration
DofBEE&S	Department of Business Education, Economics & Sociology
DofB-EA	Department of Business-Engineering Administration
DofB&E	Department of Business & Economics
DofC	Department of Commerce
DofCS	Department of Commercial Science
DofC&E	Department of Commerce & Economics
DofE&BA	Department of Economics & Business Administration
DofEB&S	Department of Economics, Business, & Sociology
DofE&C	Department of Economics & Commerce
DofEC&F	Department of Economics, Commerce, & Finance
DofE&S	Department of Economics & Sociology
DofGS	Department of Graduate Studies
DofIA	Department of Industrial Administration
DofPE	Department of Political Economy
DivofB	Division of Business

DivofBA	Division of Business Administration
DivofBA&E	Division of Business Administration & Economics
DivofB&BE	Division of Business & Business Education
DivofB&SS	Division of Business Administration & Social Sciences
DivofBE&BA	Division of Business Education & Business Administration
DivofB&C	Division of Business & Commerce
DivofC	Division of Commerce
DivofGI	Division of Graduate Instruction
DivofGS	Division of Graduate Studies
EC	Evening College
ECofC&F	Evening College of Commerce & Finance
FofA&S	Faculty of Arts & Sciences
FofC	Faculty of Commerce
FofC&BA	Faculty of Commerce & Business Administration
FTC	Foreign Trade Center
GC	Graduate College
GCDiv	Graduate College Division
GDiv	Graduate Division
GDivofB&GA	Graduate Division of Business & Governmental Administration
GDivofC&BA	Graduate Division of Commerce & Business Administration
GS	Graduate School
GSoFB	Graduate School of Business Administration
GSoFIA	Graduate School of Industrial Administration
GSoFBA	Graduate School of Business Administration
GSoFB&PA	Graduate School of Business & Public Administration
IofBA	Institute of Business Administration
McC	McCoy College
SofB	School of Business
SofBA	School of Business Administration
SofBA&E	School of Business Administration & Economics
SofB&CA	School of Business & Civic Administration
SofBE&G	School of Business, Economics, & Government
SofB&I	School of Business & Industry
SofB&PA	School of Business & Public Administration
SofB&PS	School of Business & Public Service
SofB&T	School of Business & Technology
SofC	School of Commerce
SofCA&F	School of Commerce, Accounts & Finance
SofC&A	School of Commerce & Administration
SofC&BA	School of Commerce & Business Administration
SofC&F	School of Commerce & Finance
SofE&B	School of Economics & Business
SofE&BA	School of Economics & Business Administration
SofFS	School of Foreign Service
SofG	School of Government
SofIM	School of Industrial Management
SofWB	School of World Business
UC	University College
Udiv	Undergraduate Division
WSofC&F	Wharton School of Commerce & Finance

# DELTA SIGMA PI Eighteenth Biennial Survey of Universities Offering an Organized Curriculum in Commerce and Business Administration

FOOTNOTES: 1—Reporting university unable to separate enrollment figures of men and women. 2—Data not reported.

UNIVERSITY	LOCATION	S-STATE	P-PRIVATE	M-MUNICIPAL	SEMESTER OR QUARTER	BUREAU OF BUSINESS RESEARCH ESTABLISHED	PLACEMENT SERVICE ESTABLISHED	TUITION STATE OR CITY	NAME OF YEAR ESTABLISHED	UNDERGRADUATE SCHOOLS										GRADUATE SCHOOLS									
										NO. OF YEARS TO COMPLETION	NAME OF CURRICULUM	NO. OF DEGREES GRANTED	NO. OF DEGREES GRANTED	REGISTRATION STATISTICS		NAME OF SCHOOL OR DEPT.	NAME OF DEAN OR DEPARTMENT HEAD	DEGREES GRANTED 1961-62		REGISTRATION STATISTICS									
														MEN	WOMEN			MEN	WOMEN	MEN	WOMEN	MEN	WOMEN						
																								1960-61	1961-62	1960-61	1961-62		
1	ABILENE CHRISTIAN, Abilene, Texas.....	P	S	No	Yes	1950	540	940	DoFBA	1934	James E. Freeman	4	BS	66	D	52	128	357	128	3						12	2		
2	ACADIA, Wolfville, N.S., Can.....	P	S	No	No		425	425	DoFC	1957	Sheldon L. Fountain	4	BC	8	D	52	100	7											
3	ADAMS STATE, Alamosa, Colo.....	P	S	No	Yes-1957	1952	192	387	DioVFB	1955	R. G. Wick	4	BA	28	D	52	100	7											
4	AKRON, U. of, Akron, Ohio.....	M	S	No	Yes	1951	176	352	DoFBA	1953	Richard C. Seidenbach	2	BSinBA	92	D	132	14	130	7										
5	ALABAMA, Montevallo, Ala.....	S	S	No	Yes-1961				DoFBA	1957	J. D. Dunn	4	BSinBA	31	D	101	73	154	89										
6	*ALABAMA, U. of, Tuscaloosa, Ala.....	S	S	No	Yes-1925	1925	585	585	DoFCBA	1919	Paul Garner	4	BSinCBA	29	D	172	172	1707	170										
7	ALBERTA, U. of, Edmonton, Can.....	S	S	No	Yes-1948	1948	300	300	DoFC	1932	M. W. Harris	4	BC	80	D	290	15	289	22										
8	ALBION, Reading, Pa.....	P	S	No	Yes-1939	1940	1100	1400	DoFBAE	1924	Phillip Elkin	4	BSinE	18	D	300	26	482	31										
9	AMERICAN INTERNATIONAL, Springfield, Mass.....	P	S	No	Yes-1939	1940	840	840	DoFBA	1934	Harry J. Cournotes	4	BSinBA	45	D	249	31	219	33										
10	AMERICAN U., Washington, D.C.....	P	S	No	Yes	1900	1100	1100	DoFBA	1955	Nathan A. Bailly	4	BSinBA	120	D	420	56	426	61										
11	ANDERSON, Anderson, Indiana.....	P	S	No	Yes-1952	1952	600	600	DoFBAE	1946	Glen Falls	4	BS	21	D	150	150	150											
12	ARIZONA STATE, Flagstaff, Arizona.....	S	S	No	Yes	1904	206	336	DioVFB	1939	Rever Sprunt	4	BS	49	D	249	115	266	128										
13	ARIZONA STATE U., Tempe, Arizona.....	S	S	Yes-1954	Yes	1954	207	600	DoFBA	1954	Glen D. Overman	4	BS	21	D	1300	282	1424	303										
14	ARIZONA U. of, Tucson, Arizona.....	S	S	Yes-1949	Yes	1949	202	600	CoFBA	1948	Shaw Livermore	4	BSinBA	25	D	154	327	1728	361										
15	ARKANSAS, & B M., College Heights, Ark.....	S	S	No	Yes-1960	197	270	270	DioVFB	1958	Kenneth C. Moss	4	BSA	23	D	270	130	270	151										
16	ARKANSAS TECH., Russellville, Ark.....	S	S	No	Yes-1964	150	304	304	DioVFB	1958	Ray R. Macdon	4	BS	33	D	154	252	252	95										
17	ARKANSAS STATE, Conway, Ark.....	S	S	No	Yes-1945	91	91	91	DoFBE, EAS	1945	Dean M. Blackburn	4	BS	36	D	311	209	324	228										
18	*ARKANSAS U. of, Fayetteville, Ark.....	S	S	No	Yes-1932	200	470	470	DoFC	1935	Paul M. Wilson	4	BSinBA	21	D	1281	683	1565	915										
19	ARLINGTON STATE, Arlington, Texas.....	S	S	No	Yes-1950	139	93	93	DoFBAE	1955	Wallace R. Nelson	4	BSA	83	D	683	915	915											
20	ASHLAND, Ashland, Ohio.....	P	S	No	No	864	864	864	DoFCBA	1947	David F. Loyd	4	BSinBA	22	D	125	28	129	35										
21	ASSUMPTION U., Windsor, O., Can.....	P	S	No	Yes-1958	465	565	565	DoFBA	1959	Gilbert E. Horne	4	BoFC	14	D	116	2	102	1										
22	ATHENS, Athens, Ala.....	P	S	No	No	390	390	390	DioVFB	1958	Richard M. Bryan	4	BS	19	D	32	21	48	29										
23	ATLANTIC CHRISTIAN, Wilson, N. C.....	P	S	No	Yes-1953	501	501	501	DoFBA	1953	George M. Swain	4	BS	53	D	129	52	140	52										
24	ATLANTA U., Atlanta, Ga.....	P	S	No	Yes-1962	450	450	450	DoFCBA	1962	Charles P. Anson	4	BSinBA	240	D	1180	220	1261	194										
25	AUBURN, Auburn, Ala.....	S	S	No	Yes	225	325	325	DoFCBA	1926	Clifton M. Thurston	4	BS	4	D	85	3	98	3										
26	AUGUSTANA, Elkhart, Ind.....	P	S	No	Yes-1962	750	750	750	DoFCBA	1941	Mark K. Trumb	4	BS	9	D	110	20	130	12										
27	AURORA, Aurora, Illinois.....	P	S	No	Yes-1962	750	750	750	DoFCBA	1941	Mark K. Trumb	4	BS	9	D	110	20	130	12										
28	AUSTIN, Sherman, Texas.....	P	S	No	Yes-1957	600	600	600	DoFBAE	1947	Clive L. Hall	4	BS	43	D	191	62	208	99										
29	AUSTIN PEERLESS, Clarksville, Tenn.....	S	S	No	Yes-1947	150	150	150	DoFCBA	1947	Glen S. Gentry	4	BS	43	D	191	62	208	99										
30	AUSTIN, STEPHEN F., Nacogoches, Texas.....	S	S	No	No	170	476	476	DoFBAE	1936	Frank J. Lauderdale	4	BSA	110	D	476	54	484											
31	BABSON INST., Babson Park, Mass.....	P	S	Yes-1951	Yes-1945	1170	1170	1170	DoFBAE	1949	Wallace P. Mors	4	BSinBA	154	D	674	0	678	0										
32	BALL STATE, Muncie, Ind.....	P	S	No	Yes-1949	600	600	600	DoFBA	1918	Robert M. Swanson	4	BA	173	D	137	0	137	0										
33	*BAYLOR U., Waco, Texas.....	P	S	Yes-1950	Yes	1950	600	600	DoFC	1927	Alton L. Lang	4	BSA	64	D	106	24	132	32										
34	BEREA, Berea, Ky.....	P	S	No	Yes-1960	0	0	0	DoFBA	1937	W. L. Hennefer	4	BSinBA	45	D	40	42	44	44										
35	BIRMINGHAM U., Lenoirville, N. C.....	P	S	No	Yes-1960	50	50	50	DoFCBA	1959	R. L. Dovel	4	BSinBA	37	D	50	2	50	2										
36	BUFFON, Canton, Ohio.....	P	S	No	Yes-1954	420	1020	1020	DoFBAE	1938	Howard Ray	4	BSinBA	10	D	10	2	80	2										
37	*BOSTON COLLEGE, Chestnut Hill, Mass.....	P	S	Yes	Yes	1000	1000	1000	DoFCBA	1938	Herb M. Weaver Joyce	4	BSinBA	239	D	1476	0	1487	0										
38	*BOSTON U., Boston, Mass.....	P	S	Yes-1928	Yes-1925	1150	1150	1150	DoFCBA	1913	Phillip M. Ragan	4	BSinBA	183	D	975	74	912	68										
39	*BOWLING GREEN STATE U., Bowling Green, Ohio.....	S	S	No	Yes-1946	400	750	750	DoFCBA	1935	William F. Schmitt	4	BSinBA	228	D	241	66	192	65										
40	BRADLEY U., Peoria, Ill.....	P	S	No	Yes-1946	790	790	790	DoFCBA	1946	William A. Clary	4	BS	164	D	721	64	717	66										
41	BRIDGEPORT U. of, Bridgeport, Conn.....	P	S	No	Yes-1948	390	390	390	DoFCBA	1947	Eaton V. W. Read	4	BS	91	D	480	553	553											
42	BRIDGEMAN YOUNG U., Prom, Utah.....	P	S	No	Yes-1952	260	260	260	CoFBA	1921	Weldon J. Taylor	4	BS	174	D	852	294	849	313										
43	BRITISH COLUMBIA U. of, Vancouver, Can.....	P	S	No	Yes	396	396	396	DoFCBA	1956	G. Neil Perry	5	BC	102	D	612	22	612	19										
44	BROWN U., Providence, R.I.....	P	S	No	Yes-1950	1150	1150	1150	DoFCBA	1923	Russell A. Madley	4	BSinBA	69	D	237	20	243	22										
45	*BUFFALO, U. of, Buffalo, N. Y.....	P	S	No	Yes	500	500	500	DoFCBA	1927	Arthur G. Butler	4	BSinBA	154	D	706	69	623	74										
46	BUTLER U., Indianapolis, Ind.....	P	S	No	Yes	750	750	750	DoFCBA	1937	David E. Roberts	2	BS	61	D	748	57	826	30										
47	CALIFORNIA TECH., Pomona, Calif.....	S	S	No	Yes-1958	102	259	259	DoFCBA	1958	Clarence H. Jackson	4	BS	85	D	364	0	375	60										
48	CALIFORNIA U. of, Fresno, Calif.....	S	S	Yes-1961	Yes-1961	180	350	350	DoFCBA	1958	John M. Cowie	4	BS	89	D	589	52	507	49										
49	CALIFORNIA U. of, Los Angeles, Calif.....	S	S	Yes-1949	Yes-1962	180	350	350	DoFCBA	1958	Neil M. Jacoby	2	BS	260	D	681	36	630	44										
50	CALIFORNIA WESTERN, San Diego, Calif.....	P	S	No	Yes-1960	300	300	300	DoFCBA	1957	Russell A. Bean	4	BSA	44	D	300	27	421	24										
51	CANISUS, Buffalo, N. Y.....	P	S	No	Yes	900	900	900	DoFCBA	1958	James L. McCarthy	4	BSinBA	59	D	280	7	270	8										
52	CARLETON U., Ottawa, G., Can.....	P	S	No	Yes-1953	465	465	465	ForFAS	1947	James A. Gibson	4	BC	21	D	102	150	150											
53	*CARLETON U., Ottawa, G., Can.....	P	S	No	Yes-1953	465	465	465	ForFAS	1947	James A. Gibson	4	BC	21															

City	State	Year	Pop.	Area	Dist.	Rep.	Party	Notes
Abilene	Texas	1912	780	780	1	James A. Fitzgerald	Dem	
Abilene	Texas	1916	800	800	1	L. L. Fitzgerald	Dem	
Abilene	Texas	1919	820	820	1	Abilene	Dem	
Abilene	Texas	1920	830	830	1	Abilene	Dem	
Abilene	Texas	1921	840	840	1	Abilene	Dem	
Abilene	Texas	1922	850	850	1	Abilene	Dem	
Abilene	Texas	1923	860	860	1	Abilene	Dem	
Abilene	Texas	1924	870	870	1	Abilene	Dem	
Abilene	Texas	1925	880	880	1	Abilene	Dem	
Abilene	Texas	1926	890	890	1	Abilene	Dem	
Abilene	Texas	1927	900	900	1	Abilene	Dem	
Abilene	Texas	1928	910	910	1	Abilene	Dem	
Abilene	Texas	1929	920	920	1	Abilene	Dem	
Abilene	Texas	1930	930	930	1	Abilene	Dem	
Abilene	Texas	1931	940	940	1	Abilene	Dem	
Abilene	Texas	1932	950	950	1	Abilene	Dem	
Abilene	Texas	1933	960	960	1	Abilene	Dem	
Abilene	Texas	1934	970	970	1	Abilene	Dem	
Abilene	Texas	1935	980	980	1	Abilene	Dem	
Abilene	Texas	1936	990	990	1	Abilene	Dem	
Abilene	Texas	1937	1000	1000	1	Abilene	Dem	
Abilene	Texas	1938	1010	1010	1	Abilene	Dem	
Abilene	Texas	1939	1020	1020	1	Abilene	Dem	
Abilene	Texas	1940	1030	1030	1	Abilene	Dem	
Abilene	Texas	1941	1040	1040	1	Abilene	Dem	
Abilene	Texas	1942	1050	1050	1	Abilene	Dem	
Abilene	Texas	1943	1060	1060	1	Abilene	Dem	
Abilene	Texas	1944	1070	1070	1	Abilene	Dem	
Abilene	Texas	1945	1080	1080	1	Abilene	Dem	
Abilene	Texas	1946	1090	1090	1	Abilene	Dem	
Abilene	Texas	1947	1100	1100	1	Abilene	Dem	
Abilene	Texas	1948	1110	1110	1	Abilene	Dem	
Abilene	Texas	1949	1120	1120	1	Abilene	Dem	
Abilene	Texas	1950	1130	1130	1	Abilene	Dem	
Abilene	Texas	1951	1140	1140	1	Abilene	Dem	
Abilene	Texas	1952	1150	1150	1	Abilene	Dem	
Abilene	Texas	1953	1160	1160	1	Abilene	Dem	
Abilene	Texas	1954	1170	1170	1	Abilene	Dem	
Abilene	Texas	1955	1180	1180	1	Abilene	Dem	
Abilene	Texas	1956	1190	1190	1	Abilene	Dem	
Abilene	Texas	1957	1200	1200	1	Abilene	Dem	
Abilene	Texas	1958	1210	1210	1	Abilene	Dem	
Abilene	Texas	1959	1220	1220	1	Abilene	Dem	
Abilene	Texas	1960	1230	1230	1	Abilene	Dem	
Abilene	Texas	1961	1240	1240	1	Abilene	Dem	
Abilene	Texas	1962	1250	1250	1	Abilene	Dem	
Abilene	Texas	1963	1260	1260	1	Abilene	Dem	
Abilene	Texas	1964	1270	1270	1	Abilene	Dem	
Abilene	Texas	1965	1280	1280	1	Abilene	Dem	
Abilene	Texas	1966	1290	1290	1	Abilene	Dem	
Abilene	Texas	1967	1300	1300	1	Abilene	Dem	
Abilene	Texas	1968	1310	1310	1	Abilene	Dem	
Abilene	Texas	1969	1320	1320	1	Abilene	Dem	
Abilene	Texas	1970	1330	1330	1	Abilene	Dem	
Abilene	Texas	1971	1340	1340	1	Abilene	Dem	
Abilene	Texas	1972	1350	1350	1	Abilene	Dem	
Abilene	Texas	1973	1360	1360	1	Abilene	Dem	
Abilene	Texas	1974	1370	1370	1	Abilene	Dem	
Abilene	Texas	1975	1380	1380	1	Abilene	Dem	
Abilene	Texas	1976	1390	1390	1	Abilene	Dem	
Abilene	Texas	1977	1400	1400	1	Abilene	Dem	
Abilene	Texas	1978	1410	1410	1	Abilene	Dem	
Abilene	Texas	1979	1420	1420	1	Abilene	Dem	
Abilene	Texas	1980	1430	1430	1	Abilene	Dem	
Abilene	Texas	1981	1440	1440	1	Abilene	Dem	
Abilene	Texas	1982	1450	1450	1	Abilene	Dem	
Abilene	Texas	1983	1460	1460	1	Abilene	Dem	
Abilene	Texas	1984	1470	1470	1	Abilene	Dem	
Abilene	Texas	1985	1480	1480	1	Abilene	Dem	
Abilene	Texas	1986	1490	1490	1	Abilene	Dem	
Abilene	Texas	1987	1500	1500	1	Abilene	Dem	
Abilene	Texas	1988	1510	1510	1	Abilene	Dem	
Abilene	Texas	1989	1520	1520	1	Abilene	Dem	
Abilene	Texas	1990	1530	1530	1	Abilene	Dem	
Abilene	Texas	1991	1540	1540	1	Abilene	Dem	
Abilene	Texas	1992	1550	1550	1	Abilene	Dem	
Abilene	Texas	1993	1560	1560	1	Abilene	Dem	
Abilene	Texas	1994	1570	1570	1	Abilene	Dem	
Abilene	Texas	1995	1580	1580	1	Abilene	Dem	
Abilene	Texas	1996	1590	1590	1	Abilene	Dem	
Abilene	Texas	1997	1600	1600	1	Abilene	Dem	
Abilene	Texas	1998	1610	1610	1	Abilene	Dem	
Abilene	Texas	1999	1620	1620	1	Abilene	Dem	
Abilene	Texas	2000	1630	1630	1	Abilene	Dem	







WITH THE

# ALUMNI

THE WORLD OVER

## Among the Alumni Clubs

**CHARLOTTE**—With graduation just around the corner, the Charlotte Alumni Club would like to be among the first to extend congratulations to graduating Deltasigs.

While space-age technology is important to our national defense, the technology and ideology of new graduates is important to our club. The Charlotte Club has a good cross-section of Southeastern chapters among its membership, including Alpha Chapter, so don't let your fraternal ties die when you graduate. Look us up, if we don't find you first.—CHARLES W. BANKS, SR.

**CHICAGO**—The Chicago Alumni Club launched the 1962-63 program in September with our traditional Round-Up Night at the Normandy House Restaurant. The theme for the evening was Fellowship, with the usual potables, delectable dinner and the following fun and games session.

In October the club honored Gamma Pi Chapter, one of the local chapters. We met again at the Normandy House Restaurant. Mr. Leo A. Hoegh, former Governor of Iowa and Director of Civil Defense under President Eisenhower, led off our year of interesting speakers. His topic "Now . . . is No Time for Timidity" was very timely, and evoked much discussion on the part of the brothers attending.

On November 5 the annual Founders' Day Banquet was held in Charter Hall of the Chicago Bar Association. Mr. William S. Gray, president of the Citizens of Greater Chicago, spoke interestingly and informatively on "Chicago's Civic Jungle." We were most pleased to see the grand turnout by the O.B.'s and V.O.B.'s.

Inaugurating the holiday season on December 1, the Chicago Alumni Club held the first of our mixed parties for this year. Members and their wives or girl friends met in a private dining room of Chicago's famous Kungsholm Restaurant for a tremendous smorgasbord. Following dinner we attended the Kungsholm's celebrated puppet opera for the holiday presentation of "Musical (2) in Miniature"—excerpts from "Sound of Music," "South Pacific" and "West Side Story." We were honored to have in attendance Brother and Mrs. Clarence N. Frank of the Detroit Alumni Club.

In January we returned to the Normandy House Restaurant to honor another local chapter, Alpha Omega. After the fellowship session and dinner, the brothers thrilled to a Judo demonstration. As usual, fun and games rounded out the evening.



**AUSTIN MURPHY**, Director of the Educational Department of the National Association of Manufacturers, *left*, welcomes the Delta Sigma Pi student representative, **MARV CHRISTIANS** of Mankato State College, to their 67th Congress of American Industry as Grand President **FRANKLIN A. TOBER**, *center*, looks on.

In February we met again to honor especially the brothers of Zeta Chapter. After an excellent meal and a fine speaker, the bar was again opened for fellowship and games.

On March 19 the Chicago Alumni Club will honor the past presidents—rogues that they are. Beta Chapter will be honored on April 16. On Saturday evening, May 11, a mixed party will be held at the Beta Chapter House—to celebrate, we trust, the coming of Spring. June 20, a Thursday, the club will hold its annual golf outing and election of officers at the Midwest Country Club in suburban Hinsdale. This is one of our outstanding affairs. Brothers who are unable to get away for a day of golf or cards will join us for dinner and prizes.

To each brother living in the Chicago metropolitan area, and especially recent graduates, we extend a hearty welcome. A letter or post card addressed to us at 42 East Cedar Street, Chicago 11, Illinois, will put you on our mailing list.—DONALD F. HOLEM

**GAMMA THETA OF DETROIT**—After completing our most successful year, the Gamma Theta Alumni Club has been making plans for an even better year in '63. The activities will be off to a flying start with our most popular event, the Annual Reunion Dinner at Jacoby's Restaurant. It is here that our members have

the best chance to renew old acquaintances and make new ones among the recent graduates. Following on our social calendar are a stag party which is still in the planning stages, an outing at the country club in Lexington, Michigan including golfing and swimming, a night game at Tiger Stadium, the third annual Millionaires Party and a Christmas or New Year's Eve party.

We are starting 1963 with a membership of 82 and have high hopes of going well over 100. Bob Lavens has been re-elected to an unprecedented second term as president of Gamma Theta Alumni Club. This is a fine tribute to Bob's efforts during the past year. Also serving as officers will be vice presidents Carl Aronson, Jerry Jackson and Tom Spence, along with Bill Cortese as secretary-treasurer.—ART NEFF

**LUBBOCK**—The Lubbock, Texas Alumni Club program will soon begin for the new year. No meeting was held in January, as many of the members were out of town and busy undertaking the problems of another calendar year. Our next meeting will be February 16 when we entertain wives and dates at a Dinner Dance at the Palm Room in Lubbock. We anticipate a large turn-out where the members will be glad to relax, dine, dance and swap tales before preparing to tackle the income tax people shortly thereafter.—BILL J. MCGINNIS

**NEW ORLEANS**—In compiling names of Deltasigs who have graduated from Tulane, Loyola, and those who will soon graduate from Louisiana State in New Orleans, we have formalized a list of over 350 potential members for our now-being-re-activated alumni club. When we have firm addresses for these members, we will contact them and schedule our first social and advertise it through the newspapers in order to attract out-of-town Deltasigs living in the New Orleans area.—JOHN GEISER III

**OMEGA OF PHILADELPHIA**—The Omega Chapter has just been notified that the chapter house will be taken by the City of Philadelphia for land use and university expansion purposes. We are now beginning a building fund which together with the money we receive from the eminent domain proceedings will allow us to obtain a new house in the \$35,000.00 class. There are tentative plans by a Philadelphia builder to create a fraternity row of new single homes to house the fraternities at Temple. Our present plans call for a move to temporary headquarters for about one year. During the time, of course, the social and fraternal

life of our brothers will be composed of dinners, luncheons, and parties all to be held off campus. Although there will be some inconvenience, we are now determined that the next chapter house will be a permanent one.—JOHN J. POSERINA, JR.

**PITTSBURGH**—On Saturday, January 26, 1963, the Pittsburgh Alumni Club will have a banquet at the Royal York Apartment Dining Room. This dinner will be held to honor the two faculty advisors, Robert H. Baldwin and Dr. Charles L. Cooper, who have been helping Lambda Chapter as well as being members of the alumni club. For the past few years they have been very valuable to both the active chapter and the alumni club. Also, the alumni club has invited Lambda Chapter to take part in this affair and expect the 10 new men who were initiated into Lambda Chapter in December, to be present so that everyone will get acquainted with the new men and the wives or girl friends.

The Pittsburgh Alumni Club has just completed its first round of special classes or sessions for advising and helping high school students in deciding future careers and future education. This counseling program is called "Business and Commerce Career Counseling Program." It is under the chairmanship of John E. Schneider and advised by Dr. Walter A. Schratz, two alumni members.

About 60 of the alumni club members are assisting in one of our new projects called "Project Magazines." In this project we will mail magazines to those who are not fortunate enough to be able to purchase such reading materials. Most of the recipients of the magazines are in foreign countries. The alumni group believes that helping others will mean much to our fraternity.—HERBERT W. FINNEY

**WASHINGTON**—The Washington Alumni Club's first professional event of 1963 was preceded by a party for members and their wives. Following dinner, a 60 minute color film, "The Mastery of Space," produced by the National Aeronautics and Space Ad-

**A TABLE OF DELTASIG alumni at the Ninth Annual Institute of the School of Business Alumni Association at Minnesota. Clockwise around the table starting with the front: Bryan Smith, C. Stone, W. Hardell, S. Whitney, W. Ripley, A. Johnson, C. Patton, L. Wolff, C. Meldahl, R. Janzen, F. Manguson, and R. Miller.**



The DELTASIG of DELTA SIGMA PI



**SOME OF THE CHARTER MEMBERS** of Alpha Epsilon Chapter at Minnesota pictured as they attended the Ninth Annual Institute of the School of Business Administration Alumni Association. Seated, left to right: W. Ripley, Bryan Smith, C. Patton, and Raymond Miller. Standing: Sumner Whitney, Chester Stone, Leroy Wolff, and Carl Meldahl.

ministration was shown. The film was a documentary on the man-in-space program and Astronaut John H. Glenn's orbital flight. After the film, an executive of NASA spoke briefly on space programs and answered questions from the audience.

The next professional event of the Washington Alumni Club, scheduled for April, will be a talk on the role of the political and economic analyst in the Nation's Capital by the president of an organization specializing in political and economic research in Washington.—ABE M. TAHIR, JR.

### Smith Honored by Alumni of Minnesota

THE OUTSTANDING ACHIEVEMENT AWARD of the University of Minnesota was presented to Brother Bryan E. Smith, *Alpha Epsilon Chapter*. This was made at the Ninth Annual Institute of the University of Minnesota School of Business Administration Alumni Associa-

tion. The citation accompanying the Award read as follows: "The Regents of the University of Minnesota as a token of high esteem and in recognition of noted professional attainment by Bryan E. Smith, distinguished graduate of the University, chairman of the board, Liberty Mutual Fire Insurance Company, accomplished administrator, forward looking executive, remarkable leader, highly valued by his professional associates, respected adviser to his community in civic and economic affairs, deem him to be worthy of special commendation for outstanding achievement."

Master of ceremonies for the evening was Brother Glen F. Galles, *Alpha Epsilon Chapter*, and one of the speakers was Brother Paul V. Grambsch, *Gamma Mu Chapter*. The following charter members of Alpha Epsilon Chapter were also in attendance: C. Stone, W. Hardell, S. Whitney, W. Ripley, A. Johnson, C. Patton, L. Wolff, C. Meldahl, R. Janzen, F. Manguson, and R. Miller. The banquet was held in the Hotel Leamington in Minneapolis, Minnesota.

### Howard Golden Organizes Business Tour of Europe

HOWARD E. GOLDEN, *Texas Tech*, has organized a tour that he terms is a "Shirt Sleeves Seminar of European Common Market." This tour will include well-known market places, fairs, sales offices, wholesale establishments, and a variety of retail outlets in ten of the major European countries. The tour will leave on June 10 and cover 39 days. It is specifically designed for those business people and college professors, wives too, who want a real vacation and at the same time an opportunity to learn about the peoples of Europe and their business operations. Those interested in joining Brother Golden this summer, should contact him at Texas Technological College in Lubbock, Texas.

## Donald Russell Becomes Governor of South Carolina

DONALD S. RUSSELL, *South Carolina*, has taken office as the Governor of the State of South Carolina. Brother Russell was formerly the president of the University of South Carolina in Columbia.

He was born in Lafayette Springs, Mississippi, but moved to South Carolina when a youth. All of his schooling was taken in South Carolina, except for some graduate work at the University of Michigan.

Following graduation from college, Brother Russell practiced law in Spartanburg, South Carolina, before being called to Washington to serve in the War Department and then later in the Army as a major. In 1945, he was appointed Assistant Secretary of State, and then in 1951 he was elected president of the University of South Carolina. It was while he was in this office that he became a member of Beta Gamma Chapter of Delta Sigma Pi.

## PERSONAL MENTION

RICHARD A. BODE, *De Paul*, has been made assistant controller of Eagle Food Centers in Milan, Illinois.

NJALL SIMONARSON, *Texas*, is now managing director of Saga-Tour, International Travel Bureau in Reykjavik, Iceland.

GERALD F. SCHILD, *Marquette*, is associated with the new firm Guiltinan, Bryant & Schild CPA's with offices in Pasadena, and San Diego, California.

THEODORE F. BEEMAN, *North Dakota*, a Colonel in the USMC, has been promoted to director, Plans and Operations Division, Landing Force Training Unit, at the U. S. Naval Amphibious Base, Norfolk, Va.

JAMES R. CLOVIS, *Rutgers-Beta Rho*, coordinator of student schedules at Newark College of Engineering, has retired.

JOHN L. SWINK, *Rutgers-Beta Rho*, has been named vice president and treasurer of Rutgers University. Brother Swink has been dean of administration since 1958.

JOHN S. ATKINSON, *Santa Clara*, has been made a partner in the firm of Atkinson, Lee, Fanelli & Co., Certified Public Accountants.

J. WHITNEY BUNTING, *Georgia*, has been appointed new Dean of the College of Business Administration and professor of economics. Brother Bunting was formerly head of the University Bureau of Research.

JOHN A. HURSON, *Chicago*, is a new vice president of Republic National Bank in Dallas, Texas.

THOMAS S. BAYER, JR., *Southern Methodist*, recently received a commission as Ensign in the U. S. Naval Reserve, after being trained for 16 weeks at the U. S. Naval Officers Candidate School in Newport, R.I.

MARVIN L. PANEK, *Minnesota*, was recently promoted to section head within the "SAGE" computer programming department at System Development Corporation, Santa Monica, California.

GEORGE F. LEMBLE, *Michigan*, has again won recognition as one of Provident Mutual's leading underwriters, measured not only by sales volume but also by the quality of the business he has produced.

JAMES F. HALSTEAD, *Maryland*, has been awarded a Woodrow Wilson Fellowship for graduate study in the academic year 1962-1963.



ROBERT LINDMILLER, *Ohio State*, is shown receiving a Sustained Superior Performance Award from Thomas Margetts (left) for his work in the office of the Director of the White Alice Communications System in Alaska.

## Charles Shaffer Appointed Assistant Dean at New York

DR. CHARLES LOUIS SHAFFER, New York, has been named assistant dean of New York University's Graduate School of Business Administration. Dean Shaffer will serve as director of the Graduate School's doctoral program, and has been promoted to associate professor of management.

A native of Waverly, Iowa, Brother Shaffer received his bachelor of science degree in education from NYU in 1949. He joined the staff of NYU following graduation and was named an administrative assistant in the Graduate School of Business Administration. In 1956 he received a Ph.D. degree in psychology from New York University. After two years with the Equitable Life Assurance Society as assistant to the vice president in charge of training, Dean Shaffer returned to the university's Graduate School of Business Administration as an assistant professor of management.

The new assistant dean is a member of the American Psychological Association, the New York State Psychological Association, the Inter-American Psychological Congress, and the American Personnel and Guidance Association.

## Detroit Saddened by Dean O'Regan's Death

WILLIAM B. O'REGAN, *Detroit-Theta*, dean of the Evening Division of the College of Commerce and Finance at the University of Detroit, died January 8, 1963. Even though he had been in ill health for some time, his death stunned the university and his associates.

Brother O'Regan had been dean of the evening college since 1956. He graduated from the University of Detroit in 1914, and after a tour of duty with the Army Intelligence Department, he returned to the university in 1918 as an instructor. He later became assistant dean. From 1919 to 1956 Dean O'Regan was a partner of McManus and O'Regan Advertising Agency in Detroit.

Last year the students presented their dean with his portrait in oils, done by the Detroit artist Cornelius Christiaan Zwaan. The painting now hangs in the corridor outside of the office that was his.

## LIFE MEMBERS

The following have recently become Life Members in Delta Sigma Pi:

- 2733 David E. Redmann, *Gamma Mu*, Tulane
- 2734 Richard Q. Conrad, *Gamma Lambda*, Florida State
- 2735 Douglas W. Sanders, *Delta Theta*, Oklahoma City
- 2736 William C. Morton, Jr., *Omicron*, Vanderbilt
- 2737 Harry D. Sabine, *Alpha Zeta*, Tennessee
- 2738 Carroll H. Abramson, *Gamma Mu*, Tulane
- 2739 Robert F. Croll, *Xi*, Michigan
- 2740 Joel D. Momsen, *Gamma Omicron*, San Francisco
- 2741 Howard B. Blanchard, Jr., *Gamma Psi*, Arizona
- 2742 Francis X. McHugh, Jr., *Beta Omicron*, Rutgers
- 2743 Ralph W. Moore, *Beta*, Northwestern
- 2744 Frank B. Couture, *Theta*, Detroit
- 2745 Lloyd C. Douglass, *Alpha Upsilon*, Miami U.
- 2746 Dan L. Umphenour, *Alpha Delta*, Nebraska
- 2747 James R. Allen, *Gamma Eta*, Omaha
- 2748 Roy H. Wheeler, *Gamma Iota*, New Mexico
- 2749 Gerald W. Mullins, *Delta*, Marquette
- 2750 John A. Prestbo, *Zeta*, Northwestern
- 2751 Delbert L. Helton, *Alpha Nu*, Denver
- 2752 Robert L. Von Talge, *Alpha Beta*, Missouri
- 2753 Daniel J. Houghton, *Alpha Sigma*, Alabama
- 2754 Roy H. Edwards, *Alpha Epsilon*, Minnesota
- 2755 Ronald L. Stevenson, Jr., *Beta Omega*, U. of Miami
- 2756 Delmar Veen, *Alpha Eta*, South Dakota
- 2757 Douglas K. Hand, *Gamma Omega*, Arizona State





# CHAPTERS

## OHIO U.

ALPHA OMICRON CHAPTER at Ohio University brought an eventful semester to a close with its initiation ceremonies on January 13. Twelve neophytes, and a new faculty member, Dr. Ralph Gray, instructor in economics, were initiated. After the ceremonies, a dinner was held for all undergraduate and faculty Deltasigs. Over 50 brothers were present to enjoy the meal and an after-dinner talk by Dr. Paul Noble, dean of the Ohio University School of Business Administration. Dean Noble gave an interesting and informative speech on business schools in general and stressed the fact that a professional fraternity like Delta Sigma Pi can and is doing much to improve business education.

Our professional program was well filled by excellent speakers. Mr. Douglas Fairbanks, of Ohio Bell Telephone, spoke to us on the job opportunities with his company. He brought with him an interesting movie on public utilities and told of some of his company's innovations in the field of communications. Mr. Steve Knapp informed us of the possibilities of a position in sales with the William S. Merrell Company, manufacturers of pharmaceuticals, at another professional meeting.

Alpha Omicron Chapter was well represented at the East Central Regional Meeting held in Columbus, Ohio in October, 1962. Brothers Dunkle and Schnabel attended the weekend meeting.

We are now looking forward to February, when we will be honored by a visit from Executive Secretary Charles L. Farrar. A special meeting is planned for this time. Also in the near future, the brothers will elect the officers who will lead them in the coming months. It is hoped by all members that this coming semester will be one of even greater activity in furthering ourselves and our Alpha Omicron Chapter.—GARY COLL

## MEXICO CITY

THE PROGRAM OF DELTA MU CHAPTER at Mexico City kept the members participating in chapter activities every week during the fall quarter. The winter schedule of events also followed this pattern. Smokers were held on January 11, and 16, with pledging following on January 17. Professional tours were planned for January 23 and 29, and a raffle drawing was held on January 25. February 24 to March 2 was designated as Help Week for the pledges with formal initiation being held on March 2. The program for March provided the chapter with a speaker on March 7, a birthday celebration on March 10 and another tour on March 12.—JAMES G. GIBSON, JR.



DELTA MU CHAPTER'S project this year was raising funds for the expansion of Mexico City College. Pictured here are President Glenn Nelle, left, presenting a check to Brother Richard Greenleaf, Academic Vice President of Mexico City College.

## RIDER

BETA XI CHAPTER has just recently elected new officers for the coming semester. They are as follows: Ben Battaglino, president; Gary Delehanty, senior vice president; John Torsiello, vice president; Jack Barbor, treasurer; John Palmer, secretary; John Perry, Historian; Paul Gregory, chancellor; and Chester Reeves, social chairman.

The first semester has been a most prosperous one, with both professional and social affairs. On December 7, the brothers held their annual Christmas Party for the children of the Union Industrial Home in Trenton.

The professional meetings are becoming more and more successful. At our last meeting more than 90 per cent of the brotherhood were present. The speaker was Vincent C. Pellegrino, lecturer in the management field. He is employed at General Motors Corp., Trenton, New Jersey. Many more meetings are planned for the coming semester.

Our last party was held at the Pennsbury Inn with music by the *Three Holidays*. Our next party is going to be a Nick Name party. The brothers will have to come dressed in accord with their nickname.

The sports program for the coming semester includes basketball and baseball. In both sports we are in good shape as far as ability, and should improve on last year's record.—JOHN PERRY

## GEORGIA

PI CHAPTER at the University of Georgia held its first professional meeting of the year with Dean J. W. Bunting as guest speaker. Forty-seven active Deltasigs listened attentively as he told of the departmentalization and other progress being made in the College of Business Administration at the University. Several other speakers are scheduled during the quarter to highlight our meetings.

We are looking forward to visiting several industrial firms during Winter quarter. Ford Motor Company in Atlanta will be toured in late February as well as several other leading firms in the surrounding area.

To round out our activities at Pi Chapter, a variety of social events are planned for the brothers, pledges, and their dates.—BERRY ALTON FLOYD

## SUFFOLK

SINCE the last issue of *The DELTASIG* went to press, we of Delta Psi Chapter have been very busy. On November 17, Delta Kappa (*Boston College*) and Gamma Upsilon Chapters (*Babson*) joined our chapter for a tri-chapter dance, marking the first time such an event has taken place in this area. Another unique event was held on November 30, when Delta Psi Chapter and the sisters of Delta Pi Alpha Sorority of Northeastern University got together for an informal party.

We are happy to announce the addition of 12 new brothers to Delta Psi Chapter. The 12 are John Carrigg, Robert Corduck, Cornelius Darcy, Michael Donahus, Leo Horgan, Donald Jones, William Morton, James Perchard, Harvey Waugh, Roger Waugh, Peter Zeytoonjian, and Dick Valvo who was voted best pledge in the class. Also initiated was Col. Carl Larson, commander of the uniformed branch of the Massachusetts State Police. A banquet followed the initiation, at the University Club in Boston, after which the brothers heard a very fine talk and enjoyed an interesting movie, depicting the life of a State Trooper, the talk and narration being delivered by Col. Larson.

Members of Gamma Upsilon Chapter were our guests at the initiation at which time they also initiated their pledges.

The new members deserve a great deal of credit for the successful completion of their pledge class project. On December 12, they and 15 other brothers entertained the children of the West End Settlement House with Fred Hodgeman playing the part of Santa Claus. The children were feasted with goodies and the house was presented with a 21 inch television by Delta Psi Chapter.—CHARLES J. VITALE

## ST. LOUIS

BETA SIGMA CHAPTER at St. Louis University has chosen 11 candidates for "Rose" Queen. They will be formally introduced to the brothers and their dates at a party on February 1. The candidates are: Louise Arambula, Mary Lou Eyle, Carol Ann Fox, Shirley Hessler, Sharon Johnson, Mary Kearns, Suzan Lintz, Anne Michener, Norma Jean Morrison, Andria Ziph and Marilee Zych.

The "Rose" Formal is to be held at the Starlight Roof of the Chase-Plaza Hotel on February 22. Prior to the dance there will be an alumni party. According to Brother Don Boyce, dance chairman, invitations have been sent to all 800 alumni of this chapter in a special effort to have a record turnout.

President Randy Gross was named "Man Of The Hour" at the annual Black and White Formal held by Theta Phi Alpha social sorority. This is the third consecutive year that a Deltasig has received this honor. Brother Frank Bottini was named last year and Brother Dan Grady in 1961.

Beginning in December this chapter added to its professional program a schedule of noon lectures by outstanding members of the commerce faculty. Called "Information C&F," this program has done much to stimulate interest in various business fields as well as to bring our chapter's professional side to the attention of the student body. Much of the program's success is due to the efforts of Brother Joseph Grunder, originator and chairman of the project.—LARRY FLEMING

## BUFFALO

ALPHA KAPPA CHAPTER at the University of Buffalo started off the fall semester with a "pre-school get-together" and pizza party. This gave the fraternity a good chance to get its schedule organized and ready for the coming semester before the classes began.

This year the rushing party was held on campus at the *New Norton Union* building, just recently completed. As is customary for our chapter, a "help" project is held instead of the hazing. This year, old toys were collected from the members, and were repaired and painted by the pledges. The toys were then presented to the Salvation Army. The fall initiation took place December 1, at the Lancaster Elk's Club. Following the initiation ceremonies was a dinner, highlighted by a most interesting talk by Brother Dewey Ertell from the District Attorney's office. Dancing followed and brought the exciting day to a wonderful close.

Our Founders' Day celebration took place November 4, at the Transit Lanes. This included Scotch Doubles bowling, a steak dinner, and dancing. The morning of January 5, we were gathered at Eduardo's for a luncheon program. Our speaker, the sales manager for Univac division of Remington-Rand, gave an enlightening talk about the sales profession and how to sell yourself in a job interview.

The largest publicity campaign in many years is now in progress with posters, radio, and the chapter, school and local newspapers all pointing the way to a beautiful "Rose" Queen and a successful "Rose" dinner and dance.

Our spring calendar starts off with our rush party on March 10, to be followed on March 17, by the pledging ceremonies. Sunday, April 14, is scheduled to be another gay time for bowlers and dancers alike at our spring bowling party. For the connoisseur a wine-tasting party will take place.

Naturally, we'll be looking forward to seeing everyone, especially the members of our alumni club, which usually shows up strong at our spring initiation program, tentatively set to take place May 4, at the Lancaster Elk's Club.—JOHN R. PELLEGRINO

## TULSA

FROM OUR SPACIOUS CHAPTER ROOM overlooking the campus at the University of Tulsa, Beta Chi Chapter has planned a full schedule of events for the winter term. Chapter President, Dennis Raddant, has announced that initiation will be held on February 17. We are looking forward to welcoming our new brothers into Deltasig and its growing chapter at the University of Tulsa.

As always the highlight of second semester will be provided by Brother Charles J. Loveless president of the Loveless Personnel Service here in Tulsa. Each year Brother Loveless invites the members and pledges of Beta Chi Chapter to be his guests for dinner and a full evening of entertainment at a local country club. It is an event that is eagerly awaited and deeply appreciated by all the brothers.

Other activities planned for second semester include a tour through the First National Bank of Tulsa, our annual Founders' Day celebration, and, of course, second semester rush. In the spring, the business world will be momentarily forgotten at our "Rose of Deltasig" Dance.—WILLIAM W. HOOD, Jr.

## WAKE FOREST

GAMMA NU CHAPTER at Wake Forest College has been having a fine year—not only carrying on with our professional activities, but discovering anew what it means to enjoy these activities in a spirit of brotherhood. There is no doubt but that Delta Sigma Pi will always retain a place with each of us in the years to follow after college.

On December 3, Gamma Nu Chapter welcomed nine new brothers into its circle. They are Marion Jones, Joe Harrell, Jerry Pardue, Robert Pullian, Hamp Queen, Ken Smith, Al Walke, Ken Stonebraker, and Dick Newsome. After initiation, a banquet honoring the new brothers was held at the Parkway Chalet, a local supper club. Special guest of the evening was Tracy Faires, past president of Gamma Nu Chapter, who returned to give us a few words on what it is like to be out in the cold, cruel world after graduation. Following the banquet we adjourned to the fraternity house for a party. Old and new brothers and their dates agreed that this was the perfect ending to a perfect day.

Our speaker programs for this year have included Mr. Curtis Long, advertising executive, and Mr. Cliff Brown, district sales manager for Fuller Brush Company. These outstanding gentlemen were both informative and entertaining; thus, they were enjoyed by all.

The Gamma Nu Chapter room has recently been graced by new furniture, making a definite improvement in its comfort and appearance. One of the new brothers, Joe Harrell, very generously contributed a sofa to the cause.

Gamma Nu Chapter will attend the state Trade Fair in Charlotte, N.C., this spring along with another industrial tour yet to be determined.

Incidentally, Gamma Nu Chapter's basketball team is enjoying an undefeated record in intramural league play as of this writing and has an excellent chance of taking the championship.—ROY H. ROCKWELL



THE SHEFFIELD STEEL COMPANY was one of the stops on a recent industrial tour of Epsilon Mu Chapter at Sam Houston State Teachers College in Huntsville, Texas.

## WESTERN RESERVE

BETA TAU CHAPTER of Western Reserve University has been in a rigorous social whirl, what with the Christmas holidays. Beginning the busy season was a party held jointly, for the first time, by our chapter and the Western Reserve Chapter of the Society for the Advancement of Management. A gay Christmas decor transformed the apartment of Brother Neiger, past president of both groups, into a colorful party scene. Despite Cleveland snow, the party was very well attended and enjoyed, and it is hoped that more such joint ventures can be planned in the future. Entertainment was provided by "Anita and Jim," professional folk singers.

Climaxing 1962 was the annual New Year's Eve party, hosted this year by Miss Mary Pavelecky in suburban Wickliffe, Ohio. Upon returning to classes, Beta Tau Chapter officially opened the 1963 season with a professional meeting. Mr. W. E. Lodge, management consultant for Trundle Consultants, Inc. of Cleveland and New York, spoke on "Management Control Through Accurate Cost."

Brothers Facilis, Lebowich, Montanus, and Steinfeld were formally initiated on January 6 at an impressive ceremony at the Hotel Alcazar, Cleveland Heights, Ohio. At this same initiation, Mr. Edward W. Lewis, member of the Physical Education Department of Western Reserve University and instructor in the School of Business, became an honorary brother of Beta Tau Chapter.—ROBERT M. COURTRIGHT

## NEBRASKA

ALPHA DELTA CHAPTER held its Annual Fall Party consisting of a dance which had as its theme "The Roaring Twenties," and everyone dressed to fit the occasion. Over 40 brothers and their dates attended the dance which was quite successful due to the work of Brother John Felton who heads the chapter social committee.

Brother Jerry Anderson and his committee has put up a display in the Social Science building. The display gives a pictorial story of our professional tour in addition to various pictures of our social activities.

Our Annual "Rose" Formal is progressing rapidly. Twenty-three "Rose" Queen Candidates have been selected from the sororities and the girls' residence halls. They were escorted by our brothers to a Christmas party held at the house.

The Deltasigs held a professional dinner at the Holiday Inn January 7. An interesting speaker from Investors Diversified explained the many different phases of investing. The "Rose" Queen Candidates, escorted by Deltasigs, attended the dinner.

A Recognition Dinner will be held January 18, for the graduating seniors. After the dinner Mr. La Verne Cox, our Regional Director, will be presented with an appropriate gift in grateful acknowledgement of all the help he has given the Alpha Delta Chapter and its activities.—GARY ROSENBACH



JAMES PELLOT of Alpha Upsilon Chapter at Miami University, left, receives the Haskins & Sells Award in Accountancy from Mr. Harry Weyrich.

## CHICO STATE

AFTER A LONG and enjoyable Christmas vacation, the brothers of the Epsilon Theta Chapter of Chico State College are getting back in the swing of things; and getting ready for finals, which are just around the corner.

The members of the Epsilon Theta Chapter of Delta Sigma Pi would like to wish all our brothers of other chapters, and The Central Office, a very happy and prosperous new year.

In our professional meetings this year we have enjoyed many fine speakers. Our last two speakers were Mr. C. W. Munger, who gave us a very fine speech on "The Job Interview," which I'm sure was very helpful and interesting to many of us who will be graduating in January and June; and Mr. Barron Lowe, CPA, from Sacramento, who gave a fine dissertation on "What's New in Taxes," which was very informative as to the new laws we will be encountering in the coming year.

In addition to our fine professional meetings, we also have time for merry making and money making. We recently sponsored an after game dance, with everyone in attendance having a good time. Epsilon Theta Chapter also has a dinner and dance get together planned for the early part of January, with a large turnout expected even considering that these are the rigorous days before finals begin. Relaxing and socializing this way with your fellow friends is one of the best ways to ease the tension and start you on the right foot when finals start.

As usual our newsletter committee has turned out a fine Epsilon Theta Chapter Newsletter for the current year. We are very proud of our committee for the time and effort they spent in getting it together and distributing it to the brothers of the fraternity.

We are looking forward to a very fine Spring Semester. With the loss of only two of our members and the addition of 13 promising new members, we are at full strength and ready to really give it a go this year.—DARRELL T. MOORE

## BABSON

THE FRATERNITY FOOTBALL CROWN was taken again this year by the Gamma Upsilon Chapter of Delta Sigma Pi. Our flag football team showed superior offense and defense as we first romped over Alpha Delta Sigma by a score of 65 to 6. Later Deltasig edged by Alpha Kappa Psi by a score of 13 to 7 to post our third undefeated football season in a row. Highlighting Deltasig's offense was the end run which was soon nicknamed the steamroller play as it left everything in front of it flat.

On Saturday evening, November 24, the Gamma Upsilon Chapter got together with the Delta Kappa Chapter of Boston College and the Delta Psi Chapter of Suffolk University for a dance at Tiffany's Restaurant in Boston. The *Barnstormers*, a rock-n-roll band from Tufts University, provided the loudest music ever heard in Boston. So successful was the party that it is being considered as an annual affair.

Deltasig's rush party at the Italian American Club in Wellesley on January 11, was extremely successful. Two bands provided continuous music from 8 to 12 p.m. and the *Hardly Ables* sang many songs dear to the hearts of Babson men. Approximately 300 people attended the party and enjoyed the refreshments and fun making. The Gamma Upsilon Chapter is hoping to pledge many of those who attended and perhaps take one of the largest pledge classes in our history.

At a professional meeting on January 16, Alumnus Brother Steve Briggs returned to campus to address us on the operations of International Business. Brother Briggs is presently with the Outboard Marine Co.—ROBERT S. BREWSTER

## EAST TENNESSEE STATE

ON SUNDAY, December 3, the John Sevier Hotel in Johnson City, Tennessee, was the scene of the formal initiation of Jack A. Speer, Donald W. Hash, Jr., Robert L. George, Charles W. Broyles, Ben R. Patty, Jr., B. F. Young, Jr., Charles T. Robins, Gene H. Tunnell, William H. Faw, Roy D. Brookshire, Kirby B. Wright, James F. Quillen, and Curtis A. Winston into Delta Xi Chapter of Delta Sigma Pi. Immediately following the initiation ceremonies there was a banquet at which the brothers heard a talk by Mr. Samuel Benedict, a noted public relations executive, on "The Problems of Young College Graduates In The Business World."

On January 3, 1963 Delta Xi Chapter held its first meeting of the new year. At that time the following brothers were appointed to chapter office: Jim Delp, chancellor; William H. Faw, representative to the house; and Curtis A. Winston, correspondent. At this meeting the brothers also approved the following calendar of professional and social activities for the coming quarter: Formal Pledging; February 9, Rose Dance; February 5, Industrial Tour; February 23, Party; March 3, Formal Initiation. We all want to extend our best wishes to William Felte, our new affiliate from the University of Tennessee.—CURTIS A. WINSTON

## DETROIT—Theta

THETA CHAPTER initiated four new members for the fall semester. They are: Hugh Bohle, George LaForest, Steve Winchell, and Frank Voelker. The guest speakers at this solemn ceremony were Mr. Leonard Plachta, instructor of accounting and co-moderator and Dr. Roy Klages, moderator.

Our professional program ended the semester with a lecture and a tour of the G. M. Technical Center. The lecture was presented by the controller of the Center and dealt with the opportunities of employment in G. M. This was followed by an enlightening tour of the Strohs Brewery, which educated the brothers in the area of beer production and marketing.

The social scene was highlighted by a Christmas party at Brother Gerald Gruska's home and a gala New Year's Eve party at the home of a friend of the fraternity. The Brotherhood was also royally entertained by the lovely sorority sisters of Delta Zeta at a mixer.

Delta Sigma Pi proudly received a warm note of appreciation from the administration of the University for the Christmas party it sponsored for the underprivileged children of Holy Trinity Parish. Under the able direction of Brother Don Halstead, this first for a fraternity on this campus was a fine success.

The new school year began with our annual "Rose Tea" in honor of the queen and her court. The brothers were presented with their "Rose of Deltasig" for 1963 and her court of "Rosebuds." As a result we are anxiously looking forward to the third annual statewide "Rose Ball" to be held in conjunction with the other five Michigan chapters.—WERNER F. GRUNDEI

## MARYLAND

GAMMA SIGMA CHAPTER at the University of Maryland celebrated Founders' Day with a professional dinner. The dinner was attended by the brothers and pledges of Gamma Sigma Chapter, members of Mu Chapter at Georgetown University, and members of the Washington Alumni Club. The guest speaker for the evening was Mr. John Fanning, one of the five board members of the National Labor Relation's Board.

Our last professional dinner of the year was the first for 15 new brothers who were initiated on the 16th of December. Also in attendance at this dinner was Brother H. Melvin Brown, Director-at-Large. Guest speaker was Mr. Joseph Power, Executive Vice President of the International Plasterers' Union.

The next professional event on our calendar will be a tour to the Carling Brewery. This will be followed by an educational seminar featuring Dr. Peter P. Jejins, one of the country's foremost experts on the subject of criminology, particularly the field of juvenile delinquency.

Gamma Sigma Chapter is undertaking a drive to form a council of all the business organizations and fraternities here at the University of Maryland. The purpose of this council will be to achieve a better co-ordi-



SANTA in the person of Brother Lipiec of Theta Chapter at the University of Detroit is welcomed by the underprivileged children during the annual Christmas party of the chapter.

nation of activities, to pool the strength of these organizations so as to obtain the best speakers available, and to perform many important projects that have been neglected in the past. More information on the success of this effort will be furnished as events progress.—RAYMOND G. GETTINGS

## INDIANA STATE

DELTA TAU CHAPTER recently toured the Guide Lamp Division of Delco-Remy located in Anderson, Indiana. Thirty-five brothers participated in the day's activities, and were afforded the opportunity to see "big business" in operation. Several thousand men and women constitute the employment complex of the facilities in Anderson, and it was evident that each plays an important and demanding role in the final outcome of the product.

The annual "Rose of Deltasig" Dance was held the evening of February 23. Honored Guests included President and Mrs. Raleigh Holmstedt, President Emeritus and Mrs. Ralph Tirey, Vice-president and Mrs. Kenneth Moulton. Also present and representing the business department were Dr. and Mrs. Paul Muse, Dr. and Mrs. James Lane, Mr. and Mrs. Byron Brown, and Chapter Advisor Dr. Steinbaugh. In charge of the festivities was Social Chairman Tom Maloney, assisted by Tom Scott, Don Tate, and John Thomas. The dance was held in the elegant ballroom of the Phoenix Country Club of Terre Haute. Music was provided by the Harry Burgess Orchestra.

Projects Chairman Frank Garzolini has been working diligently for the success of our Spring Clean-Up Campaign. Through this effort the men of the Chapter hope to raise \$500 to supplement the treasury balance and to provide funds for the general improvement of the Chapter. Publicity has been arranged through the Terre Haute newspapers, and by way of interviews and announcements on WBOW and WTHI radio and television. Through this broad coverage we will strive to reach as many individuals as possible and thereby gain successful support for the project.

During the January initiation of our Fall Semester Pledge Class Bruce Kirkland was selected as Outstanding Pledge. He served as president of his class and was instrumental in organizing and directing the pledge project in a profitable manner. On hand for the initiation were Alumni Bob Mayfield and Lt. Colbert Grantham. Brother Mayfield is employed with the Bemis Bros. Bag Company and has recently been transferred to Topeka, Kansas to assume a position in General Sales. Brother Grantham is currently stationed at Quantico, Virginia. It was certainly good to have these men back for a visit and we wish them every success in the future.—JOHN S. THOMAS

## MINNESOTA

ALPHA EPSILON CHAPTER held its annual "Rose" crowning in conjunction with the alumni club-sponsored homecoming dance. Miss Julie Callahan, member of Delta Gamma sorority, was chosen our "Rose of Deltasig." The dinner-dance was held in the new Ambassador Motor Hotel and was attended by more than 75 alumni couples in addition to all active members and pledges.

Most of the members travelled to Madison, Wisconsin for the Minnesota-Wisconsin football game. Members of Psi Chapter were very gracious in providing lodging, entertainment, and refreshments. The football team and the referees were not so gracious.

The new classroom building on the new West Campus of the University of Minnesota opened this fall, and most business administration classes are held there. Scheduled for opening this February is the new 14 story business administration office tower.

A professional tour of the Theo. Hamm Brewing Co. was held early in the winter quarter. It was a rushing function open to all students in business and pre-business. After the tour, the guests were brought to the house where a sandwich supper was eaten. Brother Dean Grambsch was there to say a few words and so were some of the other brother faculty members. Afterwards the guests were given the opportunity to exchange ideas with some of the lovely hostesses to live music in the party room.

Several brothers travelled to Detroit for the Associated Collegiate Press convention. Brothers from East Carolina, North Dakota, and Minnesota got together for a big celebration the final evening.

A New Year's Eve party was held in the chapter quarters. The house was decorated in Polynesian fashion. The party was a huge success due mostly to the hard work of Brother Jerry Brine and others. A wild west party was held with Phi Delta, a professional business sorority that meets in the Deltasig house, and another neighboring fraternity.

Campus Carnival and the Gopher year-book are again under the able business leadership of Deltasigs. All members get a chance to participate in the business management of these events and thus gain some practical experience.

## GEORGIA STATE

**PREPARATION FOR WINTER RUSH** kept the brothers of Kappa Chapter busy over the Christmas holidays. The rush committee headed by Brother David Klaitz worked diligently and 23 rushees attended the first rush function, an Open House at the Fraternity Room. The remaining rush functions were outlined in detail, and the purposes of Delta Sigma Pi were explained to each prospective pledge. The rushees were very interested, particularly in the three professional programs planned. Indications are that we will initiate our full quota of men at the end of this quarter.

The practice of electing a man well qualified for the office has traditionally placed a Deltasig the winner in school elections at Georgia State. Brothers elected for this quarter and their respective offices are: Dick Saess—President Senior Class, John Ellis—Senior Senator, Burns Cox—Senior Senator, Gene Hodges—Junior Senator. Delta Sigma Pi is represented in other areas of Georgia State College as well as school politics. Brothers Hamilton McDonald and Jimmy Sullivan were elected to Blue Key Honor Fraternity. Brother Hamilton McDonald, Brother Bill Redd, and Brother John Nichols were elected to *Who's Who Among Students in American Colleges*. Following the examples set by these brothers, and endeavoring to fulfill the aims of Delta Sigma Pi, Kappa Chapter continues to be held in high regard by all at Georgia State. —DONALD R. WALKER

## EASTERN NEW MEXICO

**THE HIGHLIGHT** of Epsilon Eta Chapter since the November issue of *The DELTASIG* was the initiation of Delta pledge class on January 12, 1963. Registration and pledge exams took place in the morning, while informal and formal initiation took up most of the afternoon. To bring the day to a close, what would be more appropriate to have than the "Rose of Deltasig" dance. Held in the beautiful Holiday Inn in Clovis, New Mexico, the brothers and

**MEMBERS OF DELTA TAU CHAPTER** at Indiana State College socialize, *left photo*, after a meeting at which plans were made to tour the Bunker Hill Strategic Air Command Base nearby. The three sergeants from the Base are, *left to right*: Ray Clark, Tom Smith and Bill Furgeson.

special guests enjoyed one of the best "Rose" dances held yet. To highlight the evening, our 1962 sweetheart, Miss Sandra Ozment, crowned our 1963 sweetheart, Miss Kaye Kelly.

Our professional tour for the first semester was taken to Lubbock, Texas where the brothers visited many business and industrial establishments. A week's professional tour will be in the spotlight for the second semester, and Mexico City has the top spot so far. Also professionally, Epsilon Eta Chapter is in the process of sponsoring Mr. Paul Harvey, Newscaster, sometime this next semester.

Finally we have moved into a lodge. Located one block from town, the lodge is just what the brothers have been wishing for for several months. Though no one will be living in the lodge, there is a room where chapter meetings can be held, then quickly turned into a ballroom for dancing. Also included is a TV room, and office, and, of course, a badly needed head. With all this in the making, Epsilon Eta chapter is looking forward to next semester with vigor and are awaiting the pledge initiation of Epsilon pledge class.—ROY LEE LAZENBY

## BOSTON COLLEGE

**DELTA KAPPA CHAPTER** at Boston College initiated 21 new brothers into our chapter on December 8, 1962 at our Annual Initiation Dinner-Dance held at the Beaconsfield Hotel. In addition to the new undergraduate brothers, one Faculty Brother and one Honorary Brother were also accepted. They were, respectively, Rev. George Lawlor, S.J., guidance director of the College of Business Administration and Mr. Walter G. Boudreau, executive secretary of the Boston College Alumni Association. Our Dinner-Dance was the social highlight of our year but following close behind successively was the tri-chapter party held with Suffolk University and Babson Institute in Boston on November 17.

In our professional program we sponsored a program on Career Opportunities. Mr. George Donaldson, a faculty brother and

the director of the Boston College Placement Bureau, and his assistant, Mr. John Joyce, were the guest speakers. All seniors were very appreciative of this program for they soon would be using the services offered by this Bureau. The Professional Chairman, John Sweet, notified us that our next professional meeting would include a tour to a local business in Boston, followed by a visit to school of a business executive who would address the Brotherhood.

At this writing, the new brothers are working in close ties with the rest of the Fraternity and with this cooperation it is very certain that Delta Kappa Chapter will once again reach that coveted goal in the Chapter Efficiency Contest.—KEVIN P. LITTLE

## FLORIDA

**BETA ETA CHAPTER** at the University of Florida ended the first trimester by electing a slate of officers for the winter trimester. The brothers elected were George Dow, president; Reese Allen, senior vice president; Wayne Daniels, vice president; Judson Stryker, secretary; Charles Daniels, treasurer; Marcel Marty, historian; and John Pruwitz, chancellor. These officers were installed on December 5, 1962.

Our first activity of the winter trimester was our smoker. Brother William B. Jennings, a member of the university administrative staff, addressed the brotherhood and prospective pledges on "Future Challenges to the Professional Fraternity." Brother Dean Donald J. Hart added comments in a similar vein. It is felt that with a year round academic system the professional fraternities must act to prevent students and faculty from losing contact with each other.

The brothers of Beta Eta Chapter are now performing the functions on a different schedule under our new trimester system. With normal graduation now advanced to mid-April a more efficient management of time is required. Our plans at present include a field trip to Hudson Pulp and Paper Company, Palatka, Florida, and a trip to International Minerals and Chemicals Corporation in Bartow, Florida. Participation in B-Day activities and several planned professional meetings round out this trimester's activities.—JACK PRESCOTT



## KANSAS

IOTA CHAPTER at the University of Kansas has finished an active and successful semester as all brothers prepare for finals.

Among the many successes experienced by Iota Chapter was the initiation of 15 outstanding men. The new brothers are Gary Albertson, Norman Benson, Buddy Bowles, Charles Campbell, Mike Cogswell, Larry Fink, Wendell Johns, Charles Koelsch, Richard M. Miller, Ken Riley, Sam Short, Bill Swyers, Stephen Wassenberg, John Wickert, and Robert Yates. Following the initiation the entire chapter celebrated with a steak dinner.

An exceptional professional program was held on November 29. At that time, six directors from Farmers Insurance Company spoke on business insurance. A panel discussion approach was used which created much interest.

A Founders' Day party was shared with Delta Chi Chapter from Washburn on November 16. As with all our activities, the brothers enjoyed themselves while sharing in an experience of brotherhood.

Iota Chapter is all set to begin another semester, with enough activities to make it an outstanding semester. Included among the activities is a field trip to Vendo Co.—MARVIN E. LAMTON

## SAM HOUSTON STATE

EPSILON MU CHAPTER held its installation banquet on December 1, at the Cow Palace Dining Room in Conroe, Texas. Highlights of the banquet were the awards presented to the outstanding member, Brother Burrell Lankford, and outstanding pledge, Brother Jim Wells.

The Epsilon Mu Chapter made a field trip to Houston, Texas, on December 14, to visit the Englewood Yards of Southern Pacific and the plant of Sheffield Steel Corporation. At both places the members were taken on guided tours that proved most profitable.

On January 31, the "Rose" of the Epsilon Mu Chapter will be named from three finalists—Becky Hudgins, Linda Dobinson, and Suzanne Crowley.

On January 10, new officers were elected for the spring semester. They are President Terry Lee, Senior Vice-President Burrell Lankford, Vice-President Billy Hall, Secretary Larry Robeson, Treasurer Frankie Lieb, Chancellor Giffert Alstrin, Historian Leonard Murphy, Social Chairman Dale Runkel, and Ritual Chairman Bobby Eubanks.

The chapter is already preparing for spring rush with the first party scheduled for February 12, at the Student Union Ballroom.—LLOYD A. LIVINGSTON

## EAST CAROLINA

DELTA ZETA CHAPTER at East Carolina College was favored by a visit by Brother Charles L. Farrar, Executive Secretary, during Winter Quarter. After an informal dinner-discussion meeting, Brother Farrar attended a chapter social which enabled the local brothers and Brother Farrar to become better acquainted, socially and professionally.

Later in the quarter came Winter Rush. A unique feature of Winter Rush was the viewing of color slides which told a portion of the "Delta Zeta Chapter's story of Delta Sigma Pi." As a result of our Rush, 11 pledges were initiated and are well underway in their training program.

February was a busy month for the brothers of the Delta Zeta Chapter. In keeping with the traditional Mardi Gras season, the College Union staged its annual "Mardi Gras." Our booth proved quite popular and profitable as the students chipped in their "coins" as a vote for their favorite candidate for the "Ugly Man Contest." Another February feature included a professional tour through the Washington, North Carolina, plant of National Spinning Company, Inc.—WALTER C. FAULKNER

## SOUTH DAKOTA

ALPHA ETA CHAPTER began its 1963 activities with a pleasant task—initiating 25 of the finest pledges ever. The leadership traits in the new actives will bring Alpha Eta Chapter of Delta Sigma Pi to even higher heights. The tasks being left behind by the graduating seniors will be filled with ease.

The "Rose" Ball was held at the Sheraton Martin in Sioux City. It was considered by all as the "one, big" social event of the year. Trudy Hirshman, a junior from Hawarden, Iowa, was crowned our new "Rose." Brother Steve Sykorski, master of ceremonies, presented Miss Hirshman with the traditional bouquet of roses and also a loving cup.

In the near future we have planned our annual "Mile of Dimes" benefit. The proceeds of the event are turned over to the Crippled Children's Home in Sioux Falls. The City gives us its full cooperation which includes television and radio coverage.—NEIL ANDERSON.

## DETROIT—Gamma Rho

GAMMA RHO CHAPTER has just concluded a busy, but rewarding semester. As a highlight, the initiation team did another outstanding job in conferring brotherly acceptance to: Albert Asta, Clarence Fistler, Robert Gallandt, John Hanlon, Lawrence Kopera, James Megel, Thomas Pletta, Douglas Smith, Richard Wandoff, and to two faculty members, Mr. Berthold Baer and Mr. Jerome Skrentner. The formal initiation was followed by a banquet during which Tom Pletta was elected to office of the *Keeper*. The wives and dates joined in the dance party that concluded that memorable evening.

The Chapter was pleasantly surprised by a visit from Brother Charles Farrar, Executive Secretary, who attended the rich Las Vegas Millionaire's Party, sponsored by the Gamma Rho Alumni Club. That night fortunes were made and lost at the turn of a glass. Who said that we've seen the last of the big spenders?

Alumnus John Weber opened his house on New Year's Eve to 40 couples from the Chapter to help usher in the New Year and to exchange some spirited good tidings.

With the close of the present semester, the Executive Committee is already making plans for the Spring schedule. The Chapter is well on its way in reaching its goal of 100,000 Chapter Efficiency Contest points. The social calendar is being readied for another entertaining semester, and our professional activities will provide the stimulus for attaining fraternity objectives.

Among these many pleasantries, our hearts were saddened by the death of Brother William B. O'Regan, dean of the Evening School of Commerce and Finance. Not only did the fraternity lose one of its great dedicated men, but the Chapter also lost a dear friend and an adopted son. His memory will inspire us for years to come.—RAYMOND DOMBROWSKI



A CORNER OF THE SPEAKER'S TABLE at a dinner meeting of Delta Zeta Chapter at East Carolina College in Greenville, North Carolina. Left to right: Gale Koonce, Executive Secretary Charles Farrar of The Central Office, and Chapter Advisor W. W. Howell.

## NEW YORK

ALPHA CHAPTER has just culminated another successful term. We not only improved our standing in Deltasig but increased our prestige on the campus of New York University.

Another large pledge class was inducted on "Help-Weekend" January 26-28, at the "Pines in Westchester"; otherwise known as Pete Cecchini's Hideaway. The festivities began on Thursday, January 25, with the painting of the fraternity house and other chores to keep the pledges from getting bored.

The brotherhood did not stop here. With renewed efforts, we can now conceivably double our membership by June.

The newly formed St. Timothy's committee has been a highlight addition to Alpha Chapter during the past term. The brotherhood gave Jack Wickman its full support in this project to make it a huge success.

Jim Pirretti, our professional chairman, presented the following speakers and topics as the Professional Program during the Fall Term: Honorable Harry Frank—"The Law and Its Effects on Commerce and Society"; a panel discussion on—"Government and Its Effect on Business"; Alpha alumnus Tony Matzdorf on "Career Opportunities at IT&T"; and finally Gil Monroe of the Port Authority of New York—on "The Port Authority, its Function and Career Opportunities."

The Social functions were also abundant with such highlight spots as the "Varsity Drag." Deltasig provided the 2nd largest representation of all Fraternities on campus at the Statler-Hilton Hotel in November. The "Forgive and Forget Party" on December 7 and the Annual Professor's Buffet were fully supported. The latter was distinguished by the large assemblage of the faculty, who were greeted by their hosts, the pledge class, disguised as red-vested bartenders. Our Regional Director, John Marko, and District Director Bill Myers were among the guests. The festivities continued far into the night. The brothers put a New Year's Eve Party together and the femme doorprize was a real winner—it could trace its origin to Secaucus, New Jersey.

Alpha Chapter became more athletic this term and had fine representation in the various intra-mural events, including ping-pong, bowling, handball, pool & swimming. But our pride is the basketball team and before publication of this *DELTA SIG*, we shall have been crowned Intra-mural Basketball Champs of the university.

Elections were held quietly on January 3 with the following officers representing us for the Spring '63 term: President Charles Heard, Senior Vice-President Peter Melt-schnig, Vice-President Bill Smalley, Secretary Jack Wickman, Treasurer Pat Coyle, Historian Jim Pirretti, and Chancellor Charles Bistany. In closing my last article for *The DELTASIG*, I would like to say that it has been a pleasure relating the activities of Alpha Chapter.—JAMES J. McMURRAY



FOUNDERS' DAY was celebrated at Mexico City College with a costume dance. Pictured here are the members of Delta Mu Chapter and their dates, left to right: William E. Rogers and his wife, Glenn Nelle and Miss Susan Harris, and Ronald Dorney and Miss Mae Smith.

## SOUTH CAROLINA

A WORD that would best describe Beta Gamma Chapter this semester could very well be progressiveness. We started attaining our goals early in September when we relocated our fraternity house at 1710 College Street. The new home of Deltasigs at South Carolina has received wide acclaim from our Executive Secretary Charles Farrar, our Regional Director Monroe Landreth, and many alumni and friends. To improve the appearance of the house we purchased two hundred dollars' worth of new Danish Modern furniture for the living room, and leased a cracker and drink machine for our brothers' convenience.

For most brothers, however, the most important part of our progressiveness came when we tied for second place in the *December 15th Standings* of the Chapter Efficiency Contest. We are again well on our way in achieving 100,000 points in another first place.

Tours, speakers, and movies provided by our professional committee have given us detailed insight into the operations and organizations of financial institutions. Especially investigated were the First National Bank of South Carolina and the local offices of G.M.A.C. and Merrill Lynch.

Frank Yates, the professional committee chairman, has tentatively scheduled several films and speakers following our regular meetings, as well as business tours of Columbia, Charlotte, and possibly the Charleston Ports Authorities and the West Virginia Paper and Pulp Company. One of our distinguished speakers, Dr. William Floyd, will speak to us on "Psychiatric Tests and Interviews."

Social highlights of the semester were the pre- and post-gabe drop-ins and parties during the football season, the first annual Christmas orphans' party (an *unqualified success*), followed by a fraternity party and caroling for near-by shut-ins, and several other enjoyable events. Social chairman

Harvey Radcliff carried out the program in high style on a low budget—a tribute indeed.

Our hearts swelled with pride as Beta Gamma alumnus Brother Donald Russell was inaugurated as His Excellency the Governor of the State of South Carolina on January 14, 1963.

The new officers of Beta Gamma are: President, Ken Lester; Senior Vice President, Harvey Radcliff; Vice President, Greg Gore; Secretary, Tom Timberlake; Treasurer, Robert Clark; Historian, Mike Stewart; Chancellor, Frank Yates; and Chapter Advisor, Bob Armstrong.—MICHAEL R. STEWART

## WASHBURN

DELTA CHI CHAPTER at Washburn University has had two very fine speakers at business meetings recently. Brother Joseph Garrison, partner in the C.P.A. firm of Garrison, Gresser, McMurry and Myers, spoke to the chapter on *A Day in the Life of a C.P.A.* Also Dr. Merton French of the philosophy department at Washburn discussed with us the subject of *Ethics in Business*. Much lively discussion prevailed, but no agreement was reached as to the presence of ethics in business.

Taken into active membership were 16 pledges at initiation ceremonies in January. Elmer Dageforde was awarded a plaque as the outstanding pledge in the pledge class. Brother Larry Graham is to be congratulated for his work in training the pledge class.

Delta Chi Chapter officers elected for the spring semester are: Ron Zinc, president; Myron Razor, senior vice president; Larry Graham, vice president; Ward Hushaw, chancellor; Elmer Dageforde, secretary; and Fred Rinner, treasurer. We are looking forward to a fruitful round of Spring semester activities highlighted by our third annual Business Day.—FREDERICK E. RINNER

## NEW MEXICO

GAMMA IOTA CHAPTER of the University of New Mexico celebrated Founders' Day with a dinner on the eleventh of November. Invitations were extended to members and pledges, who enjoyed a talk about the need for industrial development in our area.

Gamma Iota Chapter recently initiated 11 new brothers. These men, while pledges, were active and ambitious. Several pledge-active functions were held, but the chapter feels that the pledge class undertook the most important project. This project was to sell Christmas cards to the public and to donate the profit to the New Mexico Braille Society. The final activity of the pledge period was held on December 15, 1962. Initiation was held during the afternoon and the "Rose of Deltasig" dinner dance was held that evening at the Cedars. The highlight of the evening was the crowning of the "Rose," Miss Mary Jane Bowen.

The professional program for this semester has been especially interesting, due primarily to the efforts of Brother Gordon E. Blankenship. The chapter has listened to and enjoyed many well known speakers from our area speaking on several aspects of business, and have taken industrial tours.

Chapter elections are to be held on January 16, 1963. The chapter is looking forward to the next semester and is currently planning rush activities and another fine professional program.—BARRY J. HAMMOND

## SAN FRANCISCO STATE

DELTA OMICRON CHAPTER has just completed a very successful fall semester. The professional program consisted of two speakers, two tours, and a couple of films. The speakers were Mr. Rene Gurial from the Internal Revenue Service and Mr. Jay Speight from the Denver Rio-Grande Railroad. The two tours were taken at Leslie Salt Company and C and H Sugar Company.

The social program consisted of a Christmas Party for Kanon Kip Orphanage, a "Founders' Day" Party, and a party with one of the sororities on campus.

The chapter initiated six new members this past semester. They are David Borrelli, Thomas Moschetti, Al Blair, Art Franco, Joe Howell, and Dick Burkhart. The older brothers are expecting the new members to help us continue to prosper and grow with their hard work and great determination.

We are now looking forward to the beginning of the spring semester with the expectation of having our finest semester since our founding on April 4, 1959. The officers elected to lead us this semester are: President William Appleton, Senior Vice President David Borrelli, Vice President Bruce Queen, Secretary Thomas Moschetti, and Treasurer Stephen Jones. The chapter will have 24 active members this semester.

Our first big activity that we will undertake this coming semester will be rushing. Our first rush function will be a coffee hour which will be held on campus on February 20.

Our second major event will be the "Rose of Deltasig" Dance. It will be held on April 20 in one of the large hotels in the city.

Our third project will be a variety of tours and speakers during the semester. These will be our major activities in our professional program.

The most important object in this coming semester will be the obtaining of our goal. Our goal is the obtaining of 100,000 points in the Chapter Efficiency Contest. We obtained this goal last year for the first time and hope that our chapter will continue to reach this goal in the future.—DAVID G. MACHADO

## SOUTHERN METHODIST

THE TWO HIGHLIGHTS of the fall term for the Beta Phi Chapter at Southern Methodist University were the Founders' Day Dinner and the initiation on December 9, 1962, of 14 pledges at the fraternity house of the Delta Epsilon Chapter, North Texas State University.

Plans have been made for a series of morning coffees for the students in the School of Business at the beginning of the second semester. Each active member is submitting names of prospective pledges which will be reviewed by all of the other members prior to the coffee sessions.

A nominating committee has been named, and an election will be held at the first meeting of the second semester. Several professional meetings are planned, with one or more industrial tours.

Beta Phi Chapter congratulates the two brothers of our chapter who recently became new fathers and extends our best wishes to Brother Burson and his bride.

## MANKATO STATE

EPSILON IOTA CHAPTER began its third successful year by winning a first with its lawn display and having our queen candidate, Miss Carol Jernander, as a homecoming finalist.

The homecoming festivities were followed by our very successful Business and Career Day, the second one since Epsilon Iota Chapter's installation on December 10, 1960. The day long program saw the participation of 22 firms from the greater mid-west, the highlight of the day being the main address given by Professor Maynard C. Krueger, professor of economics at the University of Chicago.

"B" Day was followed by the initiation of a very fine pledge class, and plans are well under way for the preparation of our next pledge class, which will be in the capable hands of Brothers Breckner and Speck.

Other activities of interest this year include the election of new officers and our "Rose" Dance. The new slate of officers that took office on January 17 were Brother John Griep as president, Brother Breckner as senior vice president, Brother Speck as vice president, Brother Long as secretary, Brother Pendergast as social chairman, Brother Christians as professional chairman, Brother Patrias as chancellor, and Brother Friden as treasurer.

The "Rose" Dance was held on January 12, and from the 8 beautiful finalists Miss Georgia Demaray was chosen as Epsilon Iota Chapter's "Rose" for 1963.

As a final note I would like to say that the Epsilon Iota Chapter was very proud and honored to have one of its brothers, Marv Christians, selected to represent Delta Sigma Pi at the National Association of Manufacturers Convention in New York City.—JOHN MORRIS



**BROTHERS OF DELTA NU CHAPTER** at Loyola University in New Orleans pause for a picture before a business meeting. *First row, left to right:* L. Giroir, A. Schwartzmann, B. Flatley, and G. Smythe. *Second row:* D. Schroeder, N. Heusel, P. Meyers, J. Masters, and H. Wheeler. *Third row:* J. Dardis, E. Welsh, B. Luscay, J. Cleveland, and R. Shields. *Fourth row:* J. Dalton, V. Imbornone, B. Perez, and E. Miller. *Fifth row:* L. Faust, H. Lambert, B. Charbonnet, and S. Carriere. *Sixth row:* J. Coman, K. Sins, C. Denechaud, and R. Hammel. *Seventh row:* R. Jung, P. Gailey, P. O'Dowd, N. Phillips, and G. Hansen.



## MIAMI of Ohio

ALPHA UPSILON CHAPTER at Miami University in Oxford, Ohio will include two new innovations in the chapter's annual "Rose of Deltasig" Ball to be held on March 9. One of the innovations will be in the contest to choose the "Rose" and her court. Besides having representatives from all of Miami's 17 sororities, as has been the case over the years, the independent women's halls are also being invited to enter representatives. In this way, the brothers hope to make the contest winner more truly representative of all Miami women. It was also decided to open this year's ball to all Miami students. The brothers believe that making the dance a campus-wide event will serve to create increased interest in the contest and ball among the student body. Making the dance available for all students will mean increased work and planning; however, the brothers are determined to make this year's contest and ball their most successful. With hard work, the brothers are sure they can make it so.

The Spring professional program of the chapter will include several speakers from various organizations, and at least one more field trip. The tentative plan is to visit one of the Frigidaire Divisions in Dayton, Ohio.

At a recent active meeting, it was disclosed that Alpha Upsilon Chapter ranked fourth at the midpoint of this year's Chapter Efficiency Contest. Having submitted better than 50,000 points to the Central Office, the chapter anticipates a final score of 100,000 points.

Alpha Upsilon Chapter was recently honored to have one of its members receive the 1962 Haskins & Sells Foundation \$500. cash award for his excellence in the field of accounting. Brother Jim Pellet, vice-president of the chapter, and a senior from Monroe, Michigan was the recipient of the award.—DAVID M. STRYKER

## WESTERN MICHIGAN

EPSILON OMICRON CHAPTER has continued its varied activities since our last reporting. In the Annual Business Bowl, we were very happy to trounce Alpha Kappa Psi by a 12-0 score.

During November we celebrated Founders' Day and named our "Rose of Deltasig" at our first annual dance. The dance was a successful event and our new "Rose," Julie Seastrom, will make a beautiful candidate for National Honors. General Chairman Jim Higley did a terrific job. Our party favors made a hit with our dates.

We recently initiated 17 men into active membership. Our brothers from Delta Rho Chapter at Ferris Institute aided us greatly in initiating these men. Our banquet was an enjoyable event with all partaking of the delicious food.

At our last meeting we elevated Ed Moersch, our hardworking V.P., to the Presidency. He will be ably assisted by a fine corps of officers who will carry Epsilon Omicron Chapter onward and upward to the top chapter in our region and a 100,000 points chapter.



WILLIAM H. DURHAM, Chapter Advisor of Delta Zeta Chapter at East Carolina College assisted in passing out gifts at the annual Christmas Party of the chapter for underprivileged children.

## LOYOLA—Chicago

AT GAMMA PI CHAPTER this Fall a complex and fun-filled activity schedule enhanced a closer affiliation among the brotherhood and was instrumental in unifying them. The spirit of teamwork and co-operation was present in such projects as the construction of a float under the guidance of Brothers Maloney, Strons and Donahue; a tour of International Business Machines sponsored by Professional Chairman, Warren Fuller; and the Founders' Day and New Year's parties organized by Social Chairman, Don Hanley, benefited the entire brotherhood. This spirit of co-operation was continued in our scholastic activities as the merits of a closely knit and studious brotherhood were reflected in the induction of Brothers Ed Cunningham and John Sabota into Beta Alpha Psi National Honorary Scholarship Society in Accounting.

Four new brothers were given pins last semester and in our opinion these four brothers will prove valuable assets to the fraternity. They are Art Inda, Mike Keefe, Jack O'Neill and Bob Zwarcoz.

Our athletic team was not of championship caliber this year but the record could not reflect the valuable results and experience gained through group participation.

The Spring semester promises to be even more exciting with our 4th annual Bal Rosé, out of town tours, parties and several other gala events on the agenda.

We thoroughly enjoyed the regional convention and the well organized program helped instill and increase in our minds a business-like attitude as well as promote a closer affiliation between the chapters in our region.

In closing I would like to take this opportunity to thank the Founders of the Fraternity for giving me an opportunity to become acquainted with a tremendous Organization, as typified by the chapter at Loyola, and I only hope that in the future the Chapter will continue to promote their standards of excellence.—GERRY CASEY

## MARQUETTE

HAVING JUST COMPLETED a highly successful and well-balanced semester of scholastic, professional, and social activity, the Brothers of Delta Chapter are anticipating another and even more successful and well-rounded semester. Our latest professional functions are still quite fresh in memory. They included an excellent speech by a local representative of the Mortgage Guaranty Insurance Corporation, followed by a buffet dinner; and some very practical work in marketing research for the Miller Brewing Company—a thank you to all who helped us make this a success.

Shortly before the new year began we welcomed our new moderator, Brother Bernard Ward, who is an accounting professor in Business Administration. Mr. Ward was on hand to help us formally induct a fine class of new actives into the brotherhood. They include: Walt Bressert, John Brien, Ken Clancy, Bob Diedrich, Pat Fitch, John Koepl, Dave Krill, John Snyder, Tom Weis, and Pete Wick. Already these new men have proved a valuable asset to the brotherhood.

December marked the selection of our new "Rose." The lovely lady who will act as our official hostess this year is Miss Anne Kingston. Anne, who is a sophomore in physical therapy, received the "Rose" crown at our annual "Rose" Party.

To begin the second semester we have a new and eager group of officers. They are Ted Yoch, president; Ron Goergen, senior vice-president; Chuck Jakovich, vice-president; Don Simons, treasurer; Dave Paulus, assistant; Wayne Kallenberger, secretary; Mike Singleton, professional chairman; John Piechocki, social chairman; Jerry Ward, chancellor; John McConville, publicity chairman; Steve Judge, house manager; and Bob Keyes, assistant house manager.

We are looking forward to a real great semester which is to include two tours, two sorority mixers, our annual Delta Sigma Pi Post Prom Breakfast after Marquette's Formal Prom, and our winning (we hope!) entry in Varsity Varieties.—STEVE JUDGE

## SOUTHERN MISSISSIPPI

GAMMA TAU CHAPTER at the University of Southern Mississippi had many successful activities in the Fall, and we are expecting to have many more this spring.

The highlight of our Fall activities was the annual Fall dance. Music was provided by the *Highlites*, and everyone who attended had a great time. We also celebrated Founders' Day, November 7, and our chapter birthday, December 9.

We have an excellent group of pledges who will be initiated on January 20. Also, this Spring we have planned several field trips and have invited some very good speakers to come and speak to the chapter. Of course, the highlight of our Spring activities will be the election of our "Rose" and the "Rose" Dance.

Our plans for a house are still in the development stage, but construction should start soon. We are well on the way toward the 100,000 mark in the Chapter Efficiency Contest.—CHARLES T. BRUMFIELD

## MEMPHIS STATE

THE GAMMA ZETA CHAPTER at Memphis State University held a Christmas party on December 21 at the fraternity house. The social chairman had done extensive decorating and the Christmas spirit was very apparent. The group sang Christmas carols and exchanged gifts.

The new School of Business building which we entered this fall is just now beginning to be used to its full extent. The rooms are equipped to suit the courses for which they are used. The rooms used for accounting all have formica-top tables and screens to go with the overhead projection. The other classrooms have modern molded fiberglass desks and individual climate control.

The best pledge award this semester went to Brother Ronald Wright. Brother Wright worked very hard during the pledge period and was happy to get the award. The ritual team performed well and the formal initiation was really impressive.

The professional program for December consisted of an address by Federal Judge David C. Doten, who explained the Bankruptcy Law. The program was of vital interest to all business students. The program for January is to be the "do's" and "don't's" of job interviewing. The speakers will all be top-level personnel men from this area. The program will be vitally important to all students who will be graduating soon.

The Gamma Zeta Chapter won the attendance prize at the South Central Regional meeting in October of 1962. We are proud of the award and are now working on the trip to the Grand Chapter Congress this year.—JAMES W. ADAMS, JR.

## RUTGERS—Beta Omicron

BETA OMICRON CHAPTER at the Rutgers University School of Business Administration in Newark celebrated its 25th Anniversary with an elegant formal dance at the Military Park Hotel in Newark on November 24, 1962. There was an excellent turnout of past presidents including Brother Robert G. Busse, president in 1936 and past Grand President of the Grand Council, and of faculty members led by Brother George R. Esterly, dean of the School of Business Administration. Highlighting the evening's program was the crowning of our "Rose of Deltasig," Miss Joyce Elbrick. Miss Elbrick was escorted by Brother Peter C. Kuiken.

The highlight of our professional program last semester was the tour of Western Electric's manufacturing division in Kearney, New Jersey. After viewing the entire operations of the large plant, the brothers were treated to a king size steak dinner.

On December 15, 1962, all of the brothers went to the Crippled Children Hospital in Newark to hold its annual Christmas Party for underprivileged children. Making a surprise visit was our most famous brother of all—Santa Claus. Santa had gifts for the children and sweet words for the nurses.

St. Nick also managed to make an appearance at the Christmas House Party on December 22, 1962. He presented the

House with a new AM-FM radio. Brother Joe Letters received a special gift for being a good accountant.

Five brothers have left for a two month internship with national accounting firms. They are Brothers Joe Faimali, Joe Griscti, Richie Ruban, Charlie Ruppert, and Mike Sabarese. Beta Omicron Chapter is proud that five of its members should be accorded this opportunity and wishes them a successful and profitable stay with their new employers.

The coming of the new year saw the painting of the house and the graduation of Brother Bob (*Point of Information*) Fralley. Bob played an important part in the organization of the Beta Omicron Housing Corporation. His grateful brothers wish him success in any of his future endeavors.—

THOMAS F. BOUD JR.

## OKLAHOMA CITY

OUR CHAPTER graduated more than half of its membership last year and we are now making great strides to rebuild our membership. After the initiation of the summer pledge class, we added four more to our ranks. And for the fall semester we have initiated 13; they include Joe Brining, Orville Hood, Jim Moews, Gary Hill, John Williams, Paul Boren, Robert Humphrey, Charles Strain, John Triplett, Ronald Norick, Guy Hepler, Don Haggard, and Ben Kline.

The initiation was held on January 12 with a banquet following at Hardy's Steak House. Our speaker was from the alumni club in Chicago.

Late congratulations go to Brother Jerry E. Brandt and his bride Sherry Kay Smith. The ceremony was held at St. Charles Borromeo, Oklahoma City, on July 21, 1962.

## KENT STATE

Brothers Joe Megery and Jerry Glovka have been working on this quarter's rush program. The program proved to be very successful. At our first Smoker, Regional Director Robert Andree spoke to the new rushees. We followed this Smoker up with another one at which Dr. Paranka, a brother from Beta Tau Chapter at Western Reserve, explained the influence being a Deltasig had upon entering the business world. The rush program concluded with a rush party at which many independent and sorority girls attended.

We have finished Help Week and are initiating nine new actives into our chapter this quarter. Our new actives are Tom Barto, Greg Evans, Ron Galitsky, Terry Salin, Don Schecter, Jerry Springer, Jim Uzzle, Emil Varana, and Otto Swartz.

Brothers Bob Hagemeyer and Jerry Glovka have been chosen as president and vice-president respectively in the Business Student Association. This association is relatively new at Kent State. It consists of all student organizations in the College of Business Administration.

Beta Pi Chapter is also sending a representative delegation to Little United Nations Assembly (LUNA) to be held on our campus in the spring quarter.

Our Faculty Advisor, Dr. Monteith, has announced his resignation as our Chapter Advisor. We wish to thank him for being our Chapter Advisor, and we appreciate everything he has done to help us.

Our professional and social calendar will be filled again this quarter. Among our quarterly functions we hope to have a field trip, speakers, coffee hours, house parties, Monte Carlo party, a sledding party and other functions.—JIM DANIELS



EPSILON CHAPTER MEMBERS at the University of Iowa sit down for a chat with the officials of the Maytag Company in Newton, Iowa. In the foreground are Lou McAnly, Jr., and Norris Hines of the Maytag Company. From left to right are Brothers: John Beck, David Simmons, Steven Bachman, Patrick Reynolds, Ted Downey, Richard Blunck and David Wilkinson.



SOME SCENES from the recent initiation ceremonies of Gamma Omega Chapter at the Arizona State University in Tempe, Arizona. *Left:* the brothers and their dates twist at the dance. *Center:* Chapter Advisor Ralph Hook delivers the address of the evening. *Right:* District Director Charles I. Sutton reminds the brothers of the obligations they just assumed.

## NORTH TEXAS STATE

DELTA EPSILON CHAPTER extends warm greetings to all our brothers everywhere during these winter months. We hope this college year is going as well for each of you, individually and collectively, as it is here at North Texas.

December brought our pledgship to a close when we initiated 18 undergraduates and Mr. Anthony Raposa, Denton realtor. Under the shrewd leadership of "Pledge Daddy" Hank Hermann, they were, from all reports, the outstanding group on campus.

Following the initiation, Delta Epsilon Chapter held its annual Christmas Party. The house was overflowing with guests, dates and the whole membership. This party, we hope, will be indicative of our rush season this spring. Other functions we plan are: a tour through the Dallas business world; the time-honored Pizza Party; and (*we hope it'll be warm enough for them*) a couple or so lake parties.

At long last we were victorious in our annual Beer Keg Bowl with Delta Upsilon Chapter at T. C. U.—20-6. (*It's about time!*)

Well, it seems that we are going to throw our rent receipts away here at North Texas. Just recently we are making encouraging progress toward purchasing our chapter house, for which we owe many thanks to Brother Raposa and the Dallas Alumni Club.

We plan to see all of you at the top of the Chapter Efficiency Contest. We are already well on our way as you can see from the December reports.—JOHN R. TAYLOR

## NORTH DAKOTA

ALPHA MU CHAPTER at the University of North Dakota celebrated the coming of the New Year by receiving information that our chapter is first in points in the Midwest Region and 5th nationally in the Chapter Efficiency Contest. We hope to achieve the coveted goal of 100,000 points for the second straight year.

Miss Shannon Berent of Grand Forks, North Dakota, was selected as our "Rose"

for 1962-63 at our annual "Rose" Pageant. We feel that she will ably represent Alpha Mu Chapter in the national contest this spring.

At our last meeting of 1962, Mr. Arnold Havig, local businessman, presented an interesting talk on Investments. Then on December 15, the brothers and their dates, along with our new advisor, Mr. Spalding, and his wife gathered for our annual Christmas Party.

Our first professional meeting for the New Year featured a talk by Charles Searl, executive vice president of the Grand Forks Chamber of Commerce. He spoke to us concerning his work and the Chamber of Commerce in general.—EUGENE DAVID MIELKE

## MICHIGAN

XI CHAPTER was quite fortunate to have a meeting with their alumni club in the first week of December. The meeting was the first of its kind for both groups and much progress was made in bringing these two groups together. We found our alumni to be quite interested in the affairs of the chapter, and more than willing to help us with any problems that might arise. A second meeting has been planned for March, and it should be a bigger success than the first one.

On December 15, Brother Getz was the host for our annual chapter Christmas Party. Helping him with the arrangements were Brother Austin and Brother Blair. The party was a great success and was enjoyed by all. December 31 was the setting for the chapter's first annual New Year's Eve Party. Thanks to the diligent work of Brother Christian and Brother Whittaker the party was quite successful. The chapter is anxiously waiting to continue this precedent next year.

Business has gone on as usual, and on January 17, the new officers were installed. We have much new blood in our organization, and the ideals of the fraternity will be carried forth diligently. Exams are here, and so the brothers are madly studying to maintain their annually high grade point average.—CHARLES L. CHRISTIAN

## AUBURN

BETA LAMBDA CHAPTER of Auburn University began its fall activities with a cook-out rush supper at the home of our advisor Professor Robert Boston. A program which informed the rushees about Delta Sigma Pi combined with an excellent meal turned out to be most successful.

New officers for the fall and winter quarters, elected on October 29, were, President, Jim Whatley; Senior Vice President, Dan Rushton; Vice President, Troy McClendon; Treasurer, Bill Stout; and Secretary, Tooyo Allison.

Three brothers from Beta Lambda Chapter attended the South Central Convention at New Orleans in early October. The men attending were Brothers Swint, Allison, and Dewitt. The chapter will hear a report from these three at our upcoming business meeting on January 15.

The highlight of the quarter was the visit paid us by Executive Secretary, Brother Farrar. The officers and advisor of the chapter met with Brother Farrar and discussed problems of the chapter and means in which to combat certain difficulties.

The fall quarter came to a close with the initiation banquet on December 2. Nine men were initiated into the brotherhood preceding the banquet. The new brothers are Ronnie J. Wynn, Richard Volland, Howard Upchurch, James Robbins, Watts B. Patterson, William Orr, Herman Newell, Olin B. LeNoir, and Sam Brannon. One faculty member, Professor M. A. Hartman of the Accounting Department, was also initiated into the chapter at this time.—JAMES C. WHATLEY, JR.

## UTAH

SIGMA CHAPTER of Delta Sigma Pi has recently had the opportunity of touring Hogle Investment Company, a member of the New York Stock Exchange. The tour was very informative and was conducted on the high professional plane which typifies the activities of Delta Sigma Pi.

After a welcome holidays' recess, the brothers of Sigma Chapter are planning a quarter full of outstanding activity. Among these will be the "Rose of Deltasig" contest and a much expanded rushing activity. Graduation time in June will see most of the chapter members receiving long awaited degrees in their chosen fields.—WILLARD S. WRIGHT



ALPHA DELTA CHAPTER at the University of Nebraska gathers for a photo while on a professional tour to Denver, Colorado. When this was taken they were visiting the Gates Rubber Company plant.

## MICHIGAN STATE

GAMMA KAPPA CHAPTER AT MICHIGAN STATE participated in many activities during the fall term. We visited Howard Johnson's Restaurant early in the term where the manager explained the functions of his restaurant and then gave us a short tour. In the middle of the term we went to Chevrolet-Flint Assembly and Fisher Body where we saw mass production operations of a car assembly plant. Later in the term, we took a trip to Detroit, where we visited the Michigan National Bank and were treated to lunch by the bank. After the visit to the bank, Brother Leib's father invited us for a visit to his law office also in Detroit. Plans for additional tours are on the agenda, but at the present time we are concerned with pledging.—DENNIS C. MCREA

## OMAHA

MORRIS MILLER, president of the Omaha National Bank was the speaker at Gamma Eta Chapter's November professional meeting. He spoke on the position of the bank in the community, the diverse services performed by the bank, and the varied job possibilities in banking. His discussion was excellent and very informative.

During the Christmas vacation the brothers and the pledges got together for a Christmas party and dance. The Emperor Nero combo supplied the lively music and many of the brothers had "twisted" backs the next day, not to mention "Limbo" stomachs.

The intramural basketball team is doing about par for the course. With four losses and two wins, the picture is not exactly rosy. Before the snow began to fly, we had two intrachapter football games with the pledges standing the actives. I won't mention who won. In bowling, our position is third, with a hard schedule ahead. Volleyball is coming up and there should be a good turnout for this not-too-professional sport.

The overly-zealous pledges planned and executed a skit on a very unpropitious evening in January. It was the night planned for elections of officers to replace the pres-

ent chancellor and vice-president who are graduating mid-semester. Then, to compound the difficulties, the Regional Director LaVerne Cox chose that night to pay the chapter a surprise visit. All in all, the timing added chaos to confusion. Their rewards will come with our late initiation on February 10 at the Birchwood club.

Gamma Eta Chapter's "Rose" contest has just begun with six lovely candidates vying for the title "Rose of Deltasig." The "Rose" dance this year should be a real highlight with the biggest budget ever!—JIM VANCE

## ITHACA

AS THE FALL SEMESTER comes to a close, the brothers of Delta Lambda Chapter are busy planning for the Spring semester. The semester will begin with a party honoring the graduating brothers. Social Chairmen Kenneth Bowman and Milo Moore report that the plans are well along for the "Rose" Dance. The plans call for a formal dinner-dance to be held in the main ballroom of the Ithaca Hotel on March 9, 1963. Brother Mark Garfinkle reports that his committee is having a ball selecting the "Rose" candidate. The brothers also plan to take part in the first I.F.C. sponsored Winter Weekend to be held in mid-February.

Delta Lambda Chapter has supplemented its professional program by holding school wide lectures on controversial issues. Professor Andrew Hacker of the Cornell University government department explained his views of the integration problem in a talk titled "White America vs. Black America." Retired Brigadier General Ralph Hospital's talk about communism was supplemented with a narrated film strip entitled "Communist Encirclement."

I wish at this time to welcome the following new brothers who were initiated December 9, 1962: Bob Cheney, Charles Dianis, Tom Ferris, Bob Gibbons, Don Mordue, Emil Gusti, Earnest Pantos, Bob Savestano, Bill Seevey, and Larry Turell. I would especially like to welcome Brother John L. Zimka, assistant professor of accounting at Ithaca College.—JEREMY F. DOUGLASS

## MONMOUTH

EPSILON PI CHAPTER initiated its first pledge class on January 5. The 11 new Brothers are William Dator, Richard Coon, W. Fred Reitmeyer, Jr., Edward Zachowski, George O'Connor, Roger Di Biase, Ira Shriden, Edmund Greilick, Gene Weiss, John Murphy, and Curt Matern. The initiation was followed by a dinner-dance at the house.

Brother John Martini was elected senior vice-president to replace Brother George Truncellito, Jr. George, now a married man, will be attending classes at night. The Brothers wish him all the best in his marriage.

Our professional committee under the direction of Brother Karl Wohl is doing a splendid job. On December 5, Mr. William Jones of the New Jersey State Treasury Department, spoke to the Deltasigs and guests on "What to Expect on Your First Job in Accounting." On January 9, Mr. Robert Baker, College Recruitment Coordinator of the Internal Revenue Service spoke on "Jobs in the Internal Revenue."

Our field trip on December 28 was to the New York Stock Exchange and the New York Federal Reserve Bank. The bank tour included a visit to the gold vault, where gold bars valued in excess of 12 billion dollars are stored. After the tour, Dr. Christopher addressed the 22 Deltasigs and their dates on the functions of the bank. This was followed by a question period.

The Brotherhood was grateful for Brother Thomson's visit on December 3. He provided us with new and useful suggestions on how best to run our chapter. We would also like to thank him for the encouragement that he displayed in our program.

The Athletic committee under the direction of Brother Ed Nesbitt is very active. The Deltasigs have bowling teams in each of the two leagues, a team in the newly formed basketball league, and our softball team is eager to get going. Also, the Deltasigs attend all the home basketball games to support the "Hawks." Following games we hold informal parties at the house. Epsilon Pi Chapter is proud of both its professional and social programs.—WILLIAM H. BURKET

## MISSISSIPPI STATE

DELASIGS here as Mississippi state have been quite active in campus activities this year. The president of the School of Business and Industry is a Deltasig, many senate members are Deltasigs, and several members are in Scabbard and Blade military organization.

Our "Rose," Miss Linda Kay Owens, was a contestant in the Maid of Cotton contest. We plan to have our annual banquet in the latter part of March when our new "Rose" will be crowned.

We initiated a large pledge class this semester and have several prospects for the second semester rush. Election of new officers will be held second semester.—CHARLES T. SALTER, JR.

## RUTGERS—Beta Rho

"COOL MAN, COOL" were the feelings about our Founders' Day celebration. In contrast to last year's Hawaiian theme the brothers of Beta Rho Chapter celebrated in a beatnik mode. Anyone entering the premises surely felt as if he were at a typical coffee house rather than a Delta Sigma Pi celebration. The brothers and their guests received coffee house atmosphere and party gaiety in abundance.

Our regular business meeting, on November 14, was much more sedate. Mr. Howard Pollen, traffic manager for P. Ballantine Breweries, spoke to the brothers on the relationship of traffic management to production and the economies that could be achieved. Being evening students, many brothers were able to relate experiences of their own during the discussion period.

Beta Rho Chapter held its annual Christmas party on December 15. The donation of gifts by the brothers for local orphanages was the highlight of the Christmas season. Entertainment and frivolity were not lacking at this party, for a good time was had by all.

The coming months will prove to be very active for Beta Rho Chapter. First semester initiation, guest speakers and social affairs will fill our calendars until summer vacation.—LEONARD F. BEDNARSKI

## NEVADA

DELTA PI CHAPTER coming main events:

**WINTER:** rush program . . . New members! New Ideas! Professional lectures and seminars.

**SOMETIME THIS SPRING:** Civic relations project and the first annual "Desert Girl" dance will be held. A coed, voted by the members as "The Girl We Would Most Like to Get Lost In The Desert With" will be chosen to reign over this spring frolic. Her award? Watch for it in the next issue!

**NOW (at the time of this writing) FINAL EXAMS.**

**SPECIAL MENTION:** our thanks to Dr. Robert Goodell, able advisor and friend.—SKIP HANSEN

## PENNSYLVANIA

WELL IT'S SPRING, so they say anyway. For many of us it is also almost the end of the school year. Some of our members are planning for graduation but are going to return to school in the Fall to take additional courses.

It isn't very often that a father can witness the installation of his son into Delta Sigma Pi. Brother Oliver James saw his son, Dick, installed in December. It was a proud moment for both.

Our membership drive didn't accomplish very much in the Fall term; however, we are looking forward to a very vigorous program this Spring with more emphasis placed on the upper classes. The students seem primarily interested in getting out of class and running home.

The professional program took a little beating this past winter due to weather and

sickness. We had to reschedule a talk by the cashier of the Pennsylvania Railroad Co. in January and put a tour in for December. Because we have to hold all our meetings after classes (9:30 P.M.) we sometimes find it difficult to get speakers to come out at that hour so we cannot always plan our program too far in advance. We expect to have had one speaker each month until school closes.

We celebrated our chapter birthday in January with a party theme of Polynesian holiday. Other parties were held each month with appropriate themes for that month. Our dinner-dance will be held in June this year at the Llanerch Country Club.

Bob Downs was elected president of the senior class and Walt Dempsey as vice president.—WALT DEMPSEY

## PITTSBURGH

TEN NEW BROTHERS joined Lambda Chapter at initiation ceremonies on December 15, 1962. The wives and guests of the members attended an informal gathering arranged for them at the same time and became acquainted with the wives and guests of the new initiates. Later in the day a dinner was held to welcome the new members, their wives, and guests and was well attended by both actives and alumni. This is one of the largest initiation classes we have had recently and everyone is confident that it will be a real asset to the chapter.

On January 26, 1963, the Pittsburgh Alumni Club along with Lambda Chapter will gather at the Royal York for a banquet in honor of Dr. Charles L. Cooper and Robert H. Baldwin, alumni members and Lambda Chapter Faculty Advisors. We also have word that Dr. Cooper expects to leave the University of Pittsburgh. This will be our opportunity to say good-bye. Dr. Cooper has done a lot for Delta Sigma Pi and everyone will miss him.

Lambda Chapter is doing better than last year in the Chapter Efficiency Contest and everyone is putting forth extra effort to reach the maximum.—ROBERT C. BURKE



SOME HAPPY COUPLES at the "Rose of Deltasig" Dance of Epsilon Omicron Chapter at Western Michigan University in Kalamazoo, Michigan.

## IOWA

THIS YEAR, the members of Epsilon Chapter feel that we are on the way to the 100,000 point mark in the Chapter Efficiency Contest. Both our professional and social activities, thus far this semester, have been varied and rewarding. Tentative plans have been made which seem to hold much promise for the second semester of the school year.

One of the highlights of this semester's professional program was the tour that Epsilon Chapter took through the plants of the Maytag Company in Newton, Iowa. The tour was followed by informal conversations with the officials of the company. More tours of this type are planned for the second semester.

Our initiation for the first semester was held on December 9, 1962, in the Senate Chambers of the Old Capitol in Iowa City. The pledge class held the traditional party for the active chapter and their dates the evening before at the Hawk Ballroom.

Our newly elected officers for the coming semester are: President, Richard Wernick; Senior Vice-President, Charles Jonas; Vice-President, David Wilkinson; Treasurer, James Burke; Secretary, Patrick Reynolds; Historian, Marvin Thede; and Chancellor, Charles Stock. Brothers Richard Wernick and David Wilkinson served as the representatives of Epsilon Chapter at the Midwestern Regional Meeting at Des Moines, Iowa, this fall.—CHARLES S. JONAS

## TEXAS CHRISTIAN

DELTA UPSILON CHAPTER enjoyed many interesting and rewarding activities during the Fall Semester. We started the ball rolling by having our regular Fall Rush Program which was concluded by a private dinner in Cross Keys Restaurant. It was at this time that the chosen rushees were installed as pledges to the fraternity.

On December 12, 1962, both brothers and pledges toured Merrill Lynch Pierce Fenner & Smith Inc., New York Stock Brokerage firm. It proved to be one of the most worthwhile events of the semester. On December 16, the pledges were initiated into our chapter. They consisted of Brothers Dan Unsworth, Phil Grace, Jim Adams, Edwin Farrar, Robert DeMoss, Jerry Bob Morris, Charles Eyler, and Dr. O. Hoyt Gibson, who will serve as our chapter advisor.

Our chapter celebrated New Year's with a jubilant party which was held in the Grand Ballroom of the Hotel Texas in Fort Worth. In our celebrating, we did not forget to contribute generously to a needy family, as we do every year. On January 6, 1963, we played our annual football game with North Texas State University here on our campus. On January 8, we elected our new officers for the spring semester. They consisted of Brothers Gary Brill, President; Jerry Bob Morris, Senior Vice-President; Ross Adkins, Junior Vice-President; Phil Grace, Secretary; Wayne Harrison, Treasurer; Bill Tunstill, Historian, and Clarence Hefner, Chancellor.—BILL TUNSTILL

## LOYOLA—New Orleans

DELTA NU CHAPTER at Loyola University is in the midst of preparations for semester exams. Such seriousness necessitates a rapid transition from our recent Christmas Dance and New Year's Party.

After exams, we will look forward to the election of our "Rose." Then we will begin with our rush parties, consisting of a smoker, stag, and dance. Interest is high among members and prospective pledges, and Pledgemaster Hank Lambert is anticipating a high calibre pledge class.

Our last professional meeting proved to have a most interesting speaker in Mr. Bres of Humble Oil. His speech was entitled: "Petroleum Marketing." Special thanks go to Brother Faust for arranging the meeting.

Delta Nu Chapter has entered a team in intramural basketball, our first in this sport. Brother Schartzmann, our athletic chairman, as well as the other members on the team, hope for a successful year.

Congratulations to Brothers Leo Giroir, Pat O'Dowd, and Noel Phillips, who were recently named in "Who's Who in American Colleges and Universities."

After pledging and initiation, we will conclude another gratifying year with the "Rose" Formal bringing to fruition all our year's professional and social activities.—JOHN M. COMAN

## ARIZONA

GAMMA PSI CHAPTER has enjoyed a busy and very rewarding Fall semester. We are especially pleased with the results of our membership program for this period. With Brothers Dan Singer and Fred Montgomery handling the rushing and Brothers Dale Bergen and Alan Leeson taking charge of pledge training, we succeeded in initiating 24 top business students into the fraternity.

Our initiation dinner-dance was held December 8 at the Tucson Inn where we enjoyed a dinner of roast beef and then danced to the unusually fine music of the Nocturnes. Highlight of the evening was the crowning of our lovely "Rose," Miss Sharon Moran of Batavia, Illinois. Miss Moran is a junior majoring in education at the University of Arizona.

Another big event of the semester was our second "seat-belt clinic." With the cooperation of the Pima County Junior Chamber of Commerce, from which we secured an inventory of seat-belts on a consignment basis, and the Valley National Bank, which kindly consented to letting us use their parking lot as the clinic center, brothers and pledges sold and installed 89 seat belts on the 17th and 18th of November. We feel this program provided unusually fine practical business experience for us in addition to its value as a public service.

After the close of our clinic, actives and pledges gathered at the home of Brother Bergen to celebrate Founders' Day and enjoy a relaxed evening after two days of hard work. There were more than ample profits gained by our clinic to defray the



A HIGHLIGHT of the professional program of Theta Chapter at the University of Detroit was a visit to the General Motors Tech Center where the controller explained the job opportunities to the brothers.

costs of our celebration, which, of course, gave us more cause to celebrate.

Gamma Psi Chapter will hold annual elections on January 16. While we know the new officers will do a fine job, we will nevertheless sorely miss the services of our current president, Brother John Gilmour, who will be graduating at the end of this semester. Brother Gilmour has been a tremendous motivating force in our chapter and while we hate to lose him, we are proud to send a fine "Deltasig" on to a promising career in the world of business.—KEN SMITH

## WAYNE STATE

AS THE QUARTER comes to a close the brothers of Gamma Theta Chapter can look back at a successful season. Our biggest accomplishment has been the rental of a new fraternity house. Besides giving the brothers a new place to meet, it has given us recognition on campus. The house appeared on the cover of the IFC Rushing Booklet.

The brothers recently celebrated Christmas, by giving a party, in conjunction with Alpha Gamma Delta sorority, for a member of Detroit's underprivileged children. The children received clothes, toys and refreshments.

The new brothers of Gamma Theta Chapter are Roger Geary, Ned Grant, Ray Greimel, Guy Kenny, Roger Loeffelbein and Tom York.

Officers for the coming quarters are: Dick Williams, president, Gene Hiltz, senior vice president, Mike Smith, vice president, Tom Moore, treasurer, Jerry Pleysier, secretary, Rich Tapper, social chairman, Roy Daniel, chancellor and Ron Gordon, historian.

First on our calendar for the coming quarter is a professional meeting sponsored by the Michigan Bell Telephone Company. The Program will be about Telstar. We are looking forward to our annual "Rose" Dance.

## MIDWESTERN

SPARKED by the leadership of pledge class president and team quarterback Ted "Ears" Egerton, Epsilon Zeta Chapter romped to second place in this year's football intramurals. This is our first year to enter intramurals, but we plan to score high in all the varied contests.

New permanent quarters were acquired recently at 2301 Buchanan Street. The date of rental was one week before our planned New Year's Eve dance. Previous plans were to have the dance in a costly dance studio, but, in order to save money and initiate our new lodge, plans were made to have the dance in the new quarters. Time was short and much work was necessary to ready the building for the big event. The ceiling and walls were in dire need of paint, furniture and drapes were to be obtained, the floor needed overworking, and innumerable other jobs had to be accomplished. As usual, however, brothers and pledges rallied together to work many hard hours on the task. The result was a very successful dance and a clean, tidy lodge.

Big plans are in the making for an eventful spring semester. Biggest of these plans, of course, is the "Rose of Deltasig" ball, which may rapidly become the most popular dance of the year among the student body.—JERRY R. BRAZIL

## EAST TEXAS STATE

DELTA PHI CHAPTER at East Texas State College, Commerce, Texas, initiated 11 pledges at 1 P.M. Saturday, January 12, 1963, in the Business Administration Building. The new brothers are Jim Madden, James Hardin, David Bright, Lawrence Terry, Glen Wats, Benjamin Thieme, Bob Shearer, Dale Fabri, Frank McCuskey, Glenn Pucket, and Jim Davis. Brother Jack Fincher, Regional Director, attended the initiation ceremony. All the brothers of Delta Phi Chapter were in attendance as well as the faculty sponsors. That night we had a banquet in the Westwood room of the Cadillac Hotel in Greenville, Texas. Brother Fincher was the guest speaker for this occasion.

Several of the brothers of Delta Phi Chapter are going to take a scheduled tour of the Federal Reserve Bank in Dallas, Texas, on Tuesday, January 15. The tour will require most of the morning and that afternoon we have been invited to one of the stock brokerage firms in Dallas. The trip will take most of the day and should prove to be very educational and enlightening.

We have already submitted a large number of points to The Central Office in regard to the Chapter Efficiency Contest. Such things as scheduled trips, publications, activities, etc., should facilitate the matter of our meeting our quota without difficulty. Scholarship and academic achievement has been very high and quite commendable. We anticipate an outstanding display of academic attainment at the end of this semester.—THOMAS G. ASHTON

## ILLINOIS

WE PICKED OUR "ROSE" in a new way this year. Just to add a little authority to the contest, we asked Deltasig faculty members to do the choosing. Usually the chapter, itself, had the crucial job.

On December 7, out at the Urbana Country Club, everyone breathlessly awaited the announcement of the brothers on the faculty. We were all pleased to find they had picked a shapely Tri-Delt, Miss Sandra Bender. Sandy, a junior in French, is about five feet ten inches with brilliantly brunette hair. Her selection was a fitting conclusion to the activities of Upsilon Chapter's 42nd year on campus.

We opened our 43rd with the pumping in of some new life. On January 13, 1963, the Sunday before finals, most of the chapter came out to the new Moose Lodge where we initiated our pledge class. Al Cottral, our Vice-President, complimented the pledges on their aggressive effort to attain membership in the fraternity. At the end of the initiation banquet, Brian Wallen, the new president, gave John Ogden, the old president, a gavelled plaque as a token of the chapter's appreciation for John's diligent work.—MEL STARK

## NORTH CAROLINA

ALPHA LAMBDA CHAPTER at the University of North Carolina celebrated the initiation of our Fall pledge class at our annual "Rose" Dance, held at Schraft's in Durham. Much credit is due Brother Morris who planned the successful dinner and dance, at which over 45 brothers and their dates were present. Also we are happy to announce the initiation of nine new brothers, everyone of which is an asset to Delta Sigma Pi.

Our annual Christmas party given for the children at Oxford Orphanage was also a tremendous success. Brother Hawkins was the hit of the party as he served as Santa Claus and distributed gifts to all the children. It was truly a rewarding affair and

aided all of us in recognizing the true spirit of Christmas.

With the exception of a few bursted water pipes, our new home is in fine shape. The addition of new furniture in several rooms and the hard work of all the brothers has resulted in a fine new house. We at Alpha Lambda Chapter would like to extend to all of you an invitation to come by for a visit at any time. You are always welcome!

The future looks bright for Alpha Lambda Chapter and we are working hard to prepare for Spring rush and a new pledge class. Our aims are set high as we are striving to attain a perfect score in the Chapter Efficiency Contest this year.—ROBERT D. HARWELL

## TEXAS WESTERN

GAMMA PHI CHAPTER has its Spring semester plans ready.

The election for Spring officers has taken place. Spring rush activities are set to start with a smoker on February 13. The first pledge meeting and initiation will be held on the 20.

The first pledge activity will be a dinner with the El Paso Alumni Club to acquaint the pledges with the alumni. The pledges will be the chapter's guests. Alumni-pledge dinners have been very successful in the past in impressing pledges with the advantages of membership in Delta Sigma Pi.

An early initiation, tentatively set for Sunday, March 24, is expected this spring. The goal this year for membership is a total of 25 which we hope will be reached at initiation-time.

A full slate of professional activities is planned for this spring. The highlights of professional activities for the semester are one professional meeting a month and three field trips, the first field trip being to a cement plant for those Deltasigs interested in manufacturing, from raw materials to finished product.

Several social activities are also planned.—HECTOR VENEGAS

## NORTHWESTERN—Beta

BR-R-R! The weather in Chicago seems to be the only topic being talked about these days. Real record setting temperatures have chilled us to the bone. It would seem that this is a perfect time for hibernation, but that is not the case at Beta Chapter.

On Saturday, February 2, 1963, Beta Chapter held its semi-annual formal banquet and dance in conjunction with the Commerce Club of Northwestern. The affair was held at the G. B. Shaw Room of the Sherman House.

Top priority on the agenda has been given to the second semester rushing season. The Beta-men will present three rush smokers which will feature three noted speakers. The president of the Glenview National Bank will speak on "Community Banking Today." He will be followed by the chief of the Internal Investigation Division, Police Superintendent O. W. Wilson's controversial security unit. The third smoker will feature Mayor Joseph Nowak of Calumet City; his topic will cover the facts on how a city can rid itself of vice and a bad reputation.

Coming close on the heels of the busy rushing season will be the ever-popular, income-producing "Rose" Ramble Dance. Also looming on the near horizon is the sweat and tears connected with writing and producing an original skit for the Varsity Night Competition. Brothers Roger Pearson and Malcolm MacDonald are authors and directors.

With your permission, I'll get back to work on the agenda. See you at Bedford Springs!—TONY FERNANDEZ

## KENTUCKY

ETA CHAPTER is back on its feet!

For several years Eta Chapter's membership has been low. Activities have been few and the chapter's efficiency rating very low.

The problem was this: with few members, it's hard to do a good job of rushing; with few rushees, it's hard to build membership; with membership low it's hard to carry on an interest—building program—in short, a vicious cycle.

With the help of The Central Office and a hard-working President, Curt Quindry, Eta Chapter has broken the cycle. First came a conference with Executive Director Jim Thomson, then, with a mailing list and The Central Office's facilities, a letter was sent to prospective rushees, inviting them to a party room in a local hotel.

At the hotel, rushees were served coffee and cookies and were given an introduction to Delta Sigma Pi by Executive Secretary Charles Farrar. Dean C. C. Carpenter, one of the founding alumni and now Dean of the College of Commerce, gave a short talk on the history and future of both the college and Delta Sigma Pi.

The upshot of all this is an enthusiastic pledge class of 17 and high hopes (and plans) for the future!—DAVID F. SMITH



A RECENT Initiation Banquet of Gamma Omega Chapter at Arizona State University in Tempe, Arizona.

## LAMAR TECH

DELTA ETA CHAPTER has had a prosperous fall semester, and is looking forward to an even better spring semester. Ten new brothers were initiated in December, and by the time this issue of *The DELTASIG* appears, we will have pledged an even larger group of men.

Our school's annual Homecoming Parade for the football season was a huge success for Delta Eta Chapter. A first place trophy was our reward for our entry, "Uncle Sam Frees Cuba." Much of the credit goes to our design committee, but everyone pitched in to help build it.

An exceptionally fine speaker was our guest at our second professional meeting during December. Dr. Earl Fornell, government professor and author of the recently published book, *The Galveston Era*, talked to us on "The Economic Impact of the European Common Market." In addition to Dr. Fornell's talk, Delta Eta Chapter members had the opportunity to tour the Jefferson Island Salt Co., in Southern Louisiana, and to descend 1000 feet into the mine to watch the mining process. It was an opportunity that few of us would have missed.

Finally, to wind up the activities of the fall semester, a Christmas Dance Party was held in the Colonial Room of the Sabine Hotel in Port Arthur. And to begin the new semester right, we have rush parties, a Founders' Day Dinner, a Chapter Birthday Party, a field trip, and several professional speakers already scheduled. Delta Eta Chapter looks forward to this new semester as being the best on record.—  
DAVID MCFADDEN

## INDIANA

ALPHA PI CHAPTER at Indiana University has completed the 1962 year with a feeling of achievement that has us anxiously awaiting the years to come. Under Brother President John Hall, we have attained a true feeling of brotherhood within the chapter. Everywhere that Indiana Deltasigs gather there is warm and friendly air—be it in a meeting room or a friendly gathering about campus.

This air of brotherhood has been the foundation of our achievements of the past year: an effective initiation, an informal gathering for the brothers and dates at the nearby Fish and Game Lodge, and an interesting format of speakers that consisted of two outstanding men: Dean Weimer and Professor Bossart of the management department.

Brother Hall informs us that the ensuing election of officers on January 30, 1963 will be hard put to produce men that will get as many good results as his administration has. Brother William C. Lambert, senior vice president, staged a rush program that enabled us to select the top men from the School of Business. Brother Jack Lesniak, vice president, instructed these men in the lore of Delta Sigma Pi and brought them to a very early initiation. Secretary Joseph

C. Cissell kept us informed of the issues raised during our various meetings and kept us in touch with the outside world during his term of office. Treasurer Richard Boultinghouse very effectively curtailed all unnecessary expenses and, at times, seemed to be the only force between the chapter and insolvency. Brother Mohammed Kazemi, social chairman, was responsible for the wonderful parties and the guest speaker program that induced many members to contribute more than their share to what they considered to be a worthwhile venture.—  
WILLIAM HARVEY HOOVER, JR.

## DRAKE

THE ALPHA IOTA CHAPTER is currently making plans for its annual field trip to Chicago in May.

Events for the month of March include The "Rose of Deltasig" Dance, a field trip to a brokerage firm, and the beginning of Spring intramural sports.

In February, our chapter initiated a new committee organization in view of the expansion of the chapter to 50 members.—  
LEE BURKEY

## NORTHWESTERN—Zeta

Zeta Chapter joined into the spirit of the Christmas season with a Christmas party for 30 orphans. The party was attended by the brothers and their dates with refreshments for all and presents from Santa Claus for the Children. Lots of fun was had by all and thanks go to Brother Cosnow who handled all the details.

Twelve pledges were initiated late in January. These new brothers have increased our active total to 51 brothers. With this new strength the future looks bright indeed and Zeta Chapter intends to remain consistently among the leaders in the Chapter Efficiency Contest.

The annual "Rose" Formal was held at the Sheridan-Chicago Hotel the evening of

initiation. Highlighting the dance was the selection of the "Rose" Queen and two "Rose" Buds. Coming up on the social calendar in February is a splash party.

The brothers of Zeta Chapter are actively representing California in the Mock Congress staged here at Northwestern. We have also contributed to the Symposium, a program which brings leaders in all intellectual fields to speak on campus.

Zeta Chapter is entering into all the intramural winter sports. These include basketball, bowling, and indoor track. We are currently undefeated in our basketball league and hope to continue our fine showing.—DONALD A. COX.

## MISSISSIPPI

ALPHA PHI CHAPTER at the University of Mississippi certainly had a rather exciting and different beginning this school year, but things were back to normal in almost no time.

First Semester saw Alpha Phi Chapter sponsor such activities as a faculty smoker—of which most of the faculty are members of Delta Sigma Pi—initiation of 32 pledges and one faculty member, a fraternity get-together, several rush parties, and talks by several members of the faculty.

New at "Ole Miss" is a Delta Sigma Pi Room in Conner Hall, the School of Business and Government. The brothers have found this room to be very handy for committee meetings, filing of all the fraternity records in one central location, and even a place where the brothers can study together.

The annual Commerce Day at "Ole Miss" will again be sponsored by Alpha Phi Chapter in late March. This day at the University is dedicated entirely to the business students, and speakers from all over the state and nation come to the University and try to confer their knowledge and experience to the students in the many seminars.



GAMMA LAMBDA CHAPTER of Florida State University at Tallahassee, Florida toured Atlanta recently visiting the Atlantic Steel Co., where they are pictured, Rich's Department Store, General Motors Assembly Plant, and Grizzard Advertising Company.



## WISCONSIN

PSI CHAPTER at Wisconsin is again happy to report a very enjoyable and successful semester. With the completion of a new kitchen, our house at 132 Breese Terrace leaves little to be desired. Room decoration is next on the agenda, which should complete the Housing Corporation's plans of major improvements.

Eight of the brothers along with our District Director Don Green attended and contributed to the Regional Meeting in Chicago last Fall. The meeting proved to be very interesting and helpful to the brothers, and each was initiated into the elite club of "Yellow Dogs."

Among the highlights of the social program this semester was homecoming and the "Rose" Formal. Psi Chapter was proud and excited to be named the first place winner in their division of the display contest. Also, of course, was the great Wisconsin victory over the Northwestern Wildcats. Miss Judy Hans of Kappa Alpha Theta Sorority was crowned as Psi Chapter's "Rose of Deltasig" for 1963. Judy was truly stunning and a very deserving choice.

Our professional program was completed by a trip to Chicago and visits to Illinois Bell Telephone Company, the Federal Reserve Bank and the Merchandise Mart. Also included were many fine speakers throughout the semester.

The semester was concluded by a very successful initiation of nine very capable and outstanding young men. Also initiated as an honorary member was Ed Diener of Sears Roebuck & Company.

Newly elected officers for the coming semester are: President John Haferbecker, Senior Vice President John Paddock, Vice President Jesse Calkins, Secretary Larry Lindenschmidt, Treasurer Jim Griffin, Chancellor Jack Anderson and Historian Don Reichert. I am sure this excellent group of officers will lead Psi Chapter to another fine semester and a repeat performance of last year's achievement of 100,000 points in the Chapter Efficiency Contest.—AL KAATZ

## FERRIS

DELTA RHO CHAPTER at Ferris Institute had a fraternity honor point average of 2.8 for the fall quarter. The brothers are proud of this high scholastic achievement.

Our annual "Rose" Ball is only a few weeks away and the brothers are all working hard to make this our most successful dance yet.

Intramural basketball is well under way and Delta Rho Chapter has two teams entered in this year's competition. We have one unique team composed of men under 6 feet, the Deltasig Midgets. They have not won many games, but they give the opposition plenty of trouble. The first team is faring better and leads their league. We hope to win the intramural championship this year.

To date Delta Rho Chapter has already scored over 33,000 points and we feel that for the fourth year since our chapter has



EPSILON ETA CHAPTER at Eastern New Mexico toured several large industries in Lubbock, Texas. Pictured here are the brothers at TIME Transportation Company.

been at Ferris we will score a total of 100,000 in the Chapter Efficiency Contest.

We have scheduled three speakers and plan an industrial tour in the near future, so the present quarter promises to be a busy one for Delta Rho Chapter.—GERALD KOS

## WEST LIBERTY STATE

DELTA OMEGA CHAPTER at West Liberty State College held its formal initiation on January 12, 1963. Ten undergraduates and two faculty members were initiated at this time. Following the initiation, a dinner-dance was held at Figaretis' Restaurant where Brother Bill Wright was presented the Outstanding Pledge Award. Our featured speaker for the evening was Brother Bernard Landwehr, who is chairman of the Division of Business and Economics at West Liberty.

Our plans for the near future start with the selection of our "Rose" followed by the "Rose of Deltasig" Dance sometime in February.

Our professional program will move into high gear during the month of February with various plant tours, guest speakers, and our annual Business Conference to be held toward the end of the semester. An informal smoker and rush party for prospective pledges will be held in February with second semester initiation tentatively planned for April.

Congratulations and our best wishes for success go to the brothers who were graduated in January.—JAMES C. NEUHART II

## FLORIDA STATE

GAMMA LAMBDA CHAPTER at Florida State has successfully completed its first trimester of the now experimental trimester system by climbing to the pinnacle of the Chapter Efficiency Contest, according to the recently published mid year standings. We are most happy with our current standing and are in high hopes of maintaining this choice position throughout the coming trimesters.

On December fourth, Gamma Lambda

Chapter was honored with the presence of the Delta Sigma Pi Executive Secretary, Mr. Charles Farrar. Mr. Farrar elaborated briefly upon the plans for the Twenty-fourth Grand Chapter Congress and also reported on the proposed chapters in our area. In addition, we were highly amused by Mr. Farrar's more humorous experiences which he chose to share with us. May we again thank him for his visit.

We have added to the punch of the Gamma Lambda Chapter by initiating 22 new brothers with Keith Petteway carrying away the honor of outstanding pledge. We were pleased to have as our guest speaker, at the initiation banquet, Dr. Clarence Edney, speech professor. Dr. Edney spoke on "The Creative Mind" and its effect upon the people of business and the business world as a whole. Also at the banquet, we presented our newly elected "Rose of Deltasig," Miss Chris Townsend, a lovely brunette of Kappa Alpha Theta sorority. She will surely radiate among the "Roses" of our bouquet.

To create a more "Christmasie" atmosphere in our School of Business, we erected a beautifully decorated Christmas tree and hung large Christmas bells in the lobby. The decorations drew compliments from faculty and students alike.

Our second trimester plans include, in addition to professional meetings, more athletic competition with our traditional rival, Alpha Kappa Psi; a greatly anticipated industrial tour to New Orleans, and finally the ultimate, to be among the winners in the Chapter Efficiency Contest.

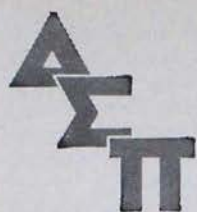
The members of Gamma Lambda Chapter and our loyal faculty Deltasigs extend to each Deltasig Chapter best wishes for a most prosperous New Year—JACK L. WHICKER

## ARIZONA STATE

GAMMA OMEGA CHAPTER was co-sponsor of the annual Business Day at Arizona State University on February 6. This highlight event of the year featured Mr. Keith Funsten, president of the New York Stock Exchange, as main speaker. The very successful program of activities was well attended by students and the general public. In addition to the main speech, the day's activities included specific interest speakers for 14 major areas of the business world. A luncheon, open also to the public, featured Ed Carson, vice president of the First National Bank of Arizona, as speaker.

Other major activities for the fall semester included a senior farewell party held at the Pulaski Club in Phoenix. The graduating seniors honored at the party were Brothers Jim Beaton, Frank Villarino, and Bill Arliskas.

Rounding out the activities of the first semester was a tour of Phoenix-McLeod Optical Company, local manufacturer and dispenser of optical lenses. The very interesting and educational excursion was sponsored by alumnus Paul Eskew, who has been giving the undergraduate chapter considerable support this year. Many thanks to you, Paul, for your continuing support!—GARTH T. TALLMAN



# DIRECTORY

## The Grand Council

**Grand President:** FRANKLIN A. TOBER, *Alpha Kappa-Buffalo*, 123 Highgate Ave., Buffalo 14, N.Y.

**Executive Director:** J. D. THOMSON, *Beta-Northwestern*, 330 South Campus Ave., Oxford, Ohio.

**Executive Secretary:** CHARLES L. FARRAR, *Beta Psi-Louisiana Tech*, 330 South Campus Ave., Oxford, Ohio.

**Director of Business Education:** WALTER A. BROWER, *Beta Xi-Rider*, 436 Park View Dr., Mount Holly, N.J.

**Director of Eastern Region:** M. JOHN MARKO, *Beta Rho-Rutgers*, 24 Medbourne Ave., Irvington 11, N.J.

**Director of Southeastern Region:** MONROE M. LANDRETH, JR., *Alpha Lambda-North Carolina*, 100 Placid Place, Charlotte 7, N.C.

**Director of East Central Region:** ROBERT F. ANDREE, *Beta Tau-Western Reserve*, 349 Justo Lane-Seven Hills, Cleveland 31, Ohio.

**Director of Central Region:** ROBERT J. ELDER, *Theta-Detroit*, 17602 Glenmore, Detroit 40, Mich.

**Director of South Central Region:** MAX BARNETT, JR., *Gamma Mu-Tulane*, 5534 S. Galvez St., New Orleans 25, La.

**Director of Midwestern Region:** LAVERNE A. COX, *Alpha Delta-Nebraska*, 1435 L St., Lincoln, Neb.

**Director of Southwestern Region:** JOE M. HEFNER, *Beta Upsilon-Texas Tech.*, 2107 Avenue Q, Lubbock, Texas.

**Director of Inter-Mountain Region:** WARREN E. ARMSTRONG, *Gamma Iota-New Mexico*, 1002 Idlewild Lane, SE, Albuquerque, N. Mex.

**Director of Western Region:** BURELL C. JOHNSON, *Alpha Sigma-Alabama*, National Cylinder Gas Co., 1588 Doolittle Dr., San Leandro, Calif.

**Director-At-Large:** H. MELVIN BROWN, *Chi-Johns Hopkins*, 12704 Beaverdale Lane, Bowie, Md.

**Past Grand President:** HOMER T. BREWER, *Kappa-Georgia State*, 808 Southern Railway Bldg., 99 Spring St., SW, Atlanta 3, Ga.

## Grand Secretary Treasurer Emeritus

H. G. Wright, *Beta-Northwestern*, 222 W. Adams St., Chicago 6, Ill.

## Executive Committee

**Chairman:** FRANKLIN A. TOBER, *Alpha Kappa-Buffalo*, 123 Highgate Ave., Buffalo 14, N.Y.

**Members:** HOMER T. BREWER, *Kappa*, 808 Southern Railway Bldg., 99 Spring St., SW, Atlanta 3, Ga.; ROBERT A. MOCELLA, *Beta*, 6303 N. Melvina Ave. Chicago 46, Ill.;

WALTER A. BROWER, *Beta Xi*, 436 Park View Dr., Mount Holly, N.J.

## Life Membership

**Chairman:** CLIFFORD H. MCCARTHY, *Alpha Kappa*, 1175 Brighton Rd., Tonawanda, N.Y.

**Members:** ROBERT J. CAMWELL, *Alpha Kappa*; JAMES P. COOLEY, *Alpha Kappa*; JOSEPH A. VOLLMAR, *Alpha Kappa*; HENRY F. ZWIERZCHOWSKI, *Alpha Kappa*.

## Alumni Activities

**Chairman:** H. MELVIN BROWN, *Chi*, 12704 Beaverdale Lane, Bowie, Md.

**Members:** HARRY G. HICKEY, *Alpha Nu*, ROBERT O. LEWIS, *Beta*, CHARLES I. SUTTON, *Gamma Omega*, GAIL A. NELCAMP, *Alpha Theta*.

## Nominations

**Chairman:** ROBERT G. BUSSE, *Beta Omicron-Rutgers*, Burroughs Corp., 970 N. Meridian St., Indianapolis 4, Ind.

**Members:** JOHN L. MCKEWEN, *Chi*, and EDWIN L. SCHUJAHN, *Psi*.

## Administrative Reorganization

**Chairman:** HOMER T. BREWER, *Kappa*, 808 Southern Railway Bldg., 99 Spring St., Atlanta 3, Ga.

**Members:** WARREN E. ARMSTRONG, *Gamma Iota*; LAVERNE A. COX, *Alpha Delta*; J. D. THOMSON, *Beta*; and FRANKLIN A. TOBER, *Alpha Kappa*.

## Chapter House Publications

**Chairman:** BURELL C. JOHNSON, *Alpha Sigma*, National Cylinder Gas Co., 1588 Doolittle Dr., San Leandro, Calif.

**Members:** WARREN E. ARMSTRONG, *Gamma Iota*; HOMER T. BREWER, *Kappa*; and LAVERNE A. COX, *Alpha Delta*.

## Educational Foundation

**President:** HOMER T. BREWER, *Kappa-Georgia State*, 808 Southern Railway Bldg., 99 Spring St., SW, Atlanta 3, Ga.

**Vice Presidents:** KENNETH B. WHITE, *Gamma-Boston*, 4911 Greenville Ave., Dallas, Texas; M. JOHN MARKO, *Beta Rho-Rutgers*, 24 Medbourne Ave., Irvington 11, N.J.

**Secretary:** JOHN L. MCKEWEN, *Chi-Johns Hopkins*, 402 Blackstone Apts., Charles and 33rd, Baltimore 18, Md.

**Executive Director and Treasurer:** ROBERT A. MOCELLA, *Beta-Northwestern*, 6303 N. Melvina Ave., Chicago 46, Ill.

## The Central Office

330 South Campus Avenue, Oxford, Ohio. Phone Oxford 523-4178.

**Executive Director:** J. D. Thomson, *Beta-Northwestern*

**Executive Secretary:** Charles L. Farrar, *Beta Psi-Louisiana Tech*

**Staff Members:** Peg Donivan, Jane Lehman, Jane Nelson, Peggy Nigg, Peg Whitelaw, Lillian Thomson, Betty Herold.

## Past Grand Presidents

\*W. N. Dean, *Alpha-New York* .. 1914  
P. J. Warner, *Alpha-New York* .. 1914-1915  
\*H. C. Cox, *Alpha-New York* .. 1915-1916  
F. J. McGoldrick, *Alpha-New York* .. 1916-1917

\*C. J. Ege, *Alpha-New York* ... 1917-1920  
H. G. Wright, *Beta-Northwestern* 1920-1924  
\*C. W. Fackler, *Epsilon-Iowa* ... 1924-1926  
H. O. Walther, *Psi-Wisconsin* ... 1926-1928  
\*R. C. Schmidt, *Theta-Detroit* ... 1928-1930  
E. L. Schujahn, *Psi-Wisconsin* ... 1930-1936

\*E. D. Milener, *Chi-Johns Hopkins* ..... 1936-1939  
J. L. McKewen, *Chi-Johns Hopkins* ..... 1939-1945  
K. B. White, *Gamma-Boston* .... 1945-1947

\*A. L. Fowler, *Beta Nu-Pennsylvania* ..... 1947-1949  
\*W. C. Sehm, *Alpha Epsilon-Minnesota* ..... 1949-1951  
H. B. Johnson, *Kappa-Georgia State* ..... 1951-1953

R. G. Busse, *Beta Omicron-Rutgers* ..... 1953-1955  
J. H. Feltham, *Chi-Johns Hopkins* 1955-1957  
Homer T. Brewer, *Kappa-Georgia State* ..... 1957-1961

\* Deceased

## The Golden Council

(Men who have served on the Grand Council)

J. Elwood Armstrong—*Johns Hopkins*  
Royal D. M. Bauer—*Missouri*  
\*Frederic H. Bradshaw—*Northwestern*  
Frank C. Brandes—*Georgia State*  
Warren F. Brooks—*Boston*

Herman H. Bruenner—*New York*  
Robert G. Busse—*Rutgers*  
Burnell C. Butler—*Southern Methodist*  
D. H. Chandler—*New Mexico*

\*James A. Cavis—*Northwestern*  
Charles Cobeen—*Marquette*  
John F. Conway—*Boston*  
A. Keate Cook—*Utah*  
\*Henry C. Cox—*New York*

\*E. Coulter Davies—*Northwestern*  
\*Walter N. Dean—*New York*  
J. Buford Edgar—*Northwestern*  
\*Charles J. Ege—*New York*  
George E. Eide—*Minnesota*  
George R. Esterly—*Kansas*

\*Clarence W. Fackler—*Iowa*  
J. Harry Feltham—*Johns Hopkins*  
Raymond W. Flodin—*DePaul*  
Fred W. Floyd—*Pennsylvania*

\*Allen L. Fowler—*Pennsylvania*  
Frank A. Geraci—*Northwestern*  
Arthur W. Gray—*Johns Hopkins*  
Waldo E. Hardell—*Minnesota*  
Harry G. Hickey—*Denver*

Earle R. Hoyt—*Northwestern*  
Robert O. Hughes—*Pennsylvania*  
Rudolph Janzen—*Minnesota*  
Howard B. Johnson—*Georgia State*  
Francis J. Kenny—*New York*  
Daniel C. Kilian—*New York*

H. Clyde Kitchens—*Georgia State*

\*Joseph A. Kuebler—Boston  
 Robert O. Lewis—Northwestern  
 Henry C. Lucas—Nebraska  
 P. Alistair MacKinnon—Arizona  
 \*Alexander F. Makay—New York  
 Harvard L. Mann—Boston  
 Andrew P. Marincovich—Southern California

Francis J. McGoldrick—New York  
 John L. McKewen—Johns Hopkins  
 George V. McLaughlin—New York  
 John F. Mee—Ohio State  
 \*William R. Merrick—Baylor  
 \*Eugene D. Milener—Johns Hopkins  
 \*Frank H. Miller—New York

Robert A. Mocella—Northwestern  
 Harold P. O'Connell—Northwestern  
 Robert E. Pearce—New York  
 William E. Pemberton—Missouri  
 Karl D. Reyer—Ohio State

\*Rudolph C. Schmidt—Detroit  
 Edwin L. Schujahn—Wisconsin  
 \*Walter C. Sehm—Minnesota  
 George J. Strong—New York  
 Charles I. Sutton—Arizona State  
 Roy N. Tipton—Memphis State  
 V. Burt Waite—Mississippi State  
 Herman O. Walther—Wisconsin  
 Philip J. Warner—New York  
 Herbert W. Wehe—Pittsburgh  
 Kenneth B. White—Boston  
 Clarence B. Wingert—Temple  
 H. G. Wright—Northwestern  
 George W. Young—New York

\* Deceased

## Alumni Clubs

ATLANTA, Georgia—Pres.: Aaron I. Alembik, 1849 Merry Lane, N.E., Atlanta 6, Ga.  
 BALTIMORE, Maryland—Pres.: Michael J. Geraghty, Jr., 5802 Edmondson Ave., Baltimore 29, Md.  
 BUFFALO, New York—Pres.: Franklin A. Tober, 123 Highgate Ave., Buffalo 14, N.Y.  
 CHARLOTTE, North Carolina—Pres.: William S. Perry, 1529 Andover Rd., Charlotte, N.C.  
 CHICAGO, Illinois—Pres.: Scott T. Wennerstrum, 134 S. LaSalle St., Chicago, Ill.  
 CINCINNATI, Ohio—Pres.: Gail A. Nelcamp, 226 Riddle Rd., Cincinnati 15, Ohio.  
 DALLAS, Texas—Pres.: Edward C. Gilmore, Jr., 3032 McCarthy, Irving, Tex.  
 DENVER, Colorado—Pres.: Harry G. Hickey, 643 Olive St., Denver, Colo.  
 DETROIT, Michigan  
 Xi—Pres.: Michael Newton, 4095 W. Buena Vista, Detroit 38, Mich.  
 Gamma Theta—Pres.: Robert F. Lavens, 22006 Tanglewood Dr., St. Clair Shores, Mich.  
 Gamma Kappa—Pres.: John P. Ammon, 14266 Winston, Detroit 39, Mich.  
 Gamma Rho—Pres.: Ronald W. O'Bryan, 826 Wheelock, Detroit 9, Mich.  
 EL PASO, Texas—Pres.: Neil E. Weinbrenner, 713 Winter Dr., El Paso, Texas.  
 KANSAS CITY, Missouri—Pres.: Halbert Lee Sturgeon, 21 W. 10th St., Kansas City, Mo.  
 LINCOLN, Nebraska—Sec.: Arthur A. Waiter, 1610 C St., Apt. 1, Lincoln, Neb.  
 LOS ANGELES, California—Pres.: Fred H. McConihay, Jr., 4642 Willis Ave., Sherman Oaks, Calif.  
 LUBBOCK, Texas—Pres.: Bill J. McGinnis, c/o Lubbock City Hall, Lubbock, Tex.  
 MEMPHIS, Tennessee—Pres.: Ricco Gatti, Jr., 2924 Douglass, Memphis, Tenn.  
 MIAMI, Florida—Pres.: Vernon E. Meyer, 4515 S.W. 94th Ct., Miami, Florida.  
 MILWAUKEE, Wisconsin—Pres.: David S. Burns, 327 N. 69th St., Wauwatosa 13, Wis.  
 NEWARK, New Jersey—Pres.: William J. Vichiconti, 15 Willow Grove Way, Englishtown, N.J.  
 NEW ORLEANS, Louisiana—Pres.: John Geiser, 2111 St. Charles Ave., Apt. 811, The Wohl Apts., New Orleans, La.  
 NEW YORK, New York—Pres.: Frank J. McGoldrick, 103-09 Puritan Ave., Forest Hills, N.Y.  
 OKLAHOMA CITY, Oklahoma—Pres.: Howard J. Vanhook, Jr., 1521 S.W. 67th St., Oklahoma City, Okla.  
 PHILADELPHIA, Pennsylvania—

Beta Nu—Pres.: Francis J. Rainer, 149 Golf View Rd., Ardmore, Pa.  
 Omega—Pres.: John J. Poserina, 2671 E. Belgrade St., Philadelphia 25, Pa.  
 PHOENIX, Arizona—Pres.: Norman L. Saville, 356 E. Windsor, Phoenix 4, Ariz.  
 PITTSBURGH, Pennsylvania—Pres.: Herbert W. Finney, 6510 Landview Rd., Pittsburgh 17, Pa.  
 SAN FRANCISCO, California—Sec.: Albert H. Zais, 320 Colon Ave., San Francisco 12, Calif.  
 TRENTON, New Jersey—Pres.: Joseph A. Casarella, 106 Wilburtha Rd., Trenton, N.J.  
 TUCSON, Arizona—Pres.: Lloyd T. Colbeck, 6218 E. Calle Aurora, Tucson, Ariz.  
 TWIN CITIES, Minneapolis and St. Paul, Minnesota—Pres.: Jerry Brine, 4507 Taylor, N.E., Minneapolis, Minn.  
 WASHINGTON, D.C.—Pres.: Geoffrey P. Gwaltney, 3631 39th St., NW, Apt. 317, Washington 16, D.C.

## Chapter Roll EASTERN REGION

REGIONAL DIRECTOR: M. JOHN MARKO, Beta Rho, 24 Medbourne Ave., Irvington 11, N.J.  
 DISTRICT DIRECTORS: GEOFFREY P. GWALTNEY, Mu, Apt. 317 3631 39th St., NW, Washington 16, D.C.  
 WILLIAM W. MYERS, Beta Rho, 23 Woodcrest Dr., Livingston, N.J.  
 DONALD J. HILL, 2 Albert Dr., Apt. 3, Woburn, Mass.  
 WILLIAM J. VICHICONTI, 15 Willow Grove Way, Englishtown, N.J.  
 BABSON (Gamma Upsilon, 1951), BABSON INSTITUTE OF BUSINESS ADM., BABSON PARK, BOSTON, MASS.  
 President: JOHN L. WHELAN, Bryant Hall, Babson Institute, Babson Park 57, Mass.  
 Advisor: WALTER H. CARPENTER, 81 Taylor St., Needham, Mass.  
 BOSTON COLLEGE (Delta Kappa, 1957), COLLEGE OF BUSINESS ADM., CHESTNUT HILL, MASS.  
 President: DAVID J. KNIPPER, 212 Chevrus Dorm, Chestnut Hill 67, Mass.  
 Advisor: FREDERICK J. ZAPPALLA, 24 Sargent Rd., Winchester, Mass.  
 GEORGETOWN (Mu, 1921), DIVISION OF BUSINESS ADM., WASHINGTON, D.C.  
 President: JOHN L. CRUM, JR., 307 New South Hall, Georgetown Univ., Washington 7, D.C.  
 Advisor: WILBUR E. DAVISON, 901 Elm Ave., Takoma Park, Md.  
 JOHNS HOPKINS (Chi, 1922), DIVISION OF BUSINESS (MCCOY COLLEGE), BALTIMORE, MD.  
 President: ALLAN J. BAER, 412 Garden St., Washington 21, D.C.  
 Advisor: JOHN A. THIELMAN, 8102 Evergreen Dr., Baltimore 34, Md.  
 MARYLAND (Gamma Sigma, 1950), COLLEGE OF BUSINESS AND PUBLIC ADM., COLLEGE PARK, MD.  
 President: DAVID T. RICHEYSON, 2028 Allen Pl., Washington 9, D.C.  
 Advisor: J. ALLEN COOK, 4316 Claggett Pine-way, University Park, Md.  
 MONMOUTH COLLEGE (Epsilon Pi, 1962), DEPARTMENT OF BUSINESS ADM., WEST LONG BRANCH, N.J.  
 President: DAVID S. ROBINSON, 580 Kingfisher Circle, Breton Woods, N.J.  
 Advisor: ALFRED K. BROWN, 220 Ocean Ave., Apt. 2, Long Branch, N.J.  
 NEW YORK (Alpha, 1907), SCHOOL OF COMMERCE, ACCOUNTS, AND FINANCE, NEW YORK, N.Y.  
 President: CHARLES F. HEARD, JR., 456 Rockaway Rd., Apt. 44, Dover, N.J.  
 Advisor: HENRY GOMEZ, 241 Ave. of Americas, New York 14, N.Y.  
 Chapter Quarters: 13 E. 9th St., New York, N.Y.  
 PENNSYLVANIA (Beta Nu, 1932), THE WHARTON SCHOOL OF FINANCE AND COMMERCE AND EVENING SCHOOL OF ACCOUNTS AND FINANCE, PHILADELPHIA, PA.  
 President: WALTER T. DEMPSEY, JR., 2311 Delancey Pl., Philadelphia, Pa.  
 Advisor: DICK R. DAVIES, JR., 217 Kevin Lane, Media, Pa.  
 Chapter House: 3932 Spruce St., Philadelphia, Pa.  
 PENN STATE (Alpha Gamma, 1923), COLLEGE OF BUSINESS ADMINISTRATION, UNIVERSITY PARK, PA.  
 President: DAVID K. DOWNES, Rm. 712-C, Pollock A, University Park, Pa.  
 Advisor: WILLIAM M. HENCH, 412 W. Fairmount Ave., State College, Pa.  
 RIDER (Beta Xi, 1934), DEPARTMENT OF ACCOUNTING AND BUSINESS ADMINISTRATION, TRENTON, N.J.  
 President: BENEDICT BATTAGLINO, 909 Bellevue Ave., Trenton, N.J.

Advisor: DEMETRIUS DERTOUZOS, 5 Royal Oak Rd., Trenton, N.J.  
 Chapter House: 909 Bellevue Ave., Trenton, N.J.  
 RUTGERS (Beta Omicron, 1937), SCHOOL OF BUSINESS ADM., NEWARK, N.J.  
 President: VALENTINE P. MAGDA, 484 Madeline Ave., Garfield, N.J.  
 Advisor: WILLIAM J. VICHICONTI, 15 Willow Grove Way, Englishtown, N.J.  
 Chapter Quarters: 38-40 Park Pl., Newark, N.J.  
 RUTGERS (Beta Rho, 1942), UNIVERSITY COLLEGE, NEWARK, N.J.  
 President: RALPH F. PROCTOR III, 52 Martin Rd., Verona, N.J.  
 Advisors: CHARLES F. BENGSTON, 112 Cypress Dr., Colonia, N.J.; RICHARD F. FEATHERS, 516 Prospect St., Westfield, N.J.  
 SUFFOLK (Delta Psi, 1960), DEPARTMENT OF BUSINESS ADM., BOSTON, MASS.  
 President: ALLERTON TOWNE, 12 Cleveland Rd., Wellesley, Mass.  
 Advisors: FRED L. SULLIVAN, 6 Stebbins Ave., Brockton, Mass.; WILLIAM F. DEGIACONO, 341 Green St., Weymouth, Mass.  
 TEMPLE (Omega, 1923), SCHOOL OF BUSINESS AND PUBLIC ADM., PHILADELPHIA, PA.  
 President: FRED DI PAOLO, 1737 N. Park Ave., Philadelphia, Pa.  
 Advisor: WILLARD MOORE, 3153 Princeton Ave., Philadelphia 24, Pa.  
 Chapter House: 1737 N. Park Ave., Philadelphia, Pa.

## SOUTHEASTERN REGION

REGIONAL DIRECTOR: MONROE M. LANDRETH, JR., Alpha Lambda, 100 Placid Pl., Charlotte, N.C.  
 EAST CAROLINA (Delta Zeta, 1955), SCHOOL OF BUSINESS, GREENVILLE, N.C.  
 President: MALCOLM L. BURRIS, 407 E. 8th St., Greenville, N.C.  
 Advisors: W. W. HOWELL, 1105 W. Rock Springs Rd., Greenville, N.C.; WILLIAM H. DURHAM, JR., Box 130, East Carolina College, Greenville, N.C.  
 EAST TENNESSEE STATE (Delta Xi, 1958), SCHOOL OF BUSINESS ADMINISTRATION AND ECONOMICS, JOHNSON CITY, TENN.  
 President: DOUGLAS B. SAMS, 125 W. Sevier St., Kingsport, Tenn.  
 Advisor: CLYDE H. FARNSWORTH, Box 2096 E.T.S.C., Johnson City, Tenn.  
 FLORIDA SOUTHERN (Delta Iota, 1957), DIVISION OF BUSINESS, LAKELAND, FLA.  
 President: GEORGE G. HAGLER, 812 Gary Rd., Lakeland, Fla.  
 Advisor: DELPHIN W. FLOBERG, Dept. of Business, Florida Southern Col., Lakeland, Fla.  
 FLORIDA STATE (Gamma Lambda, 1949), SCHOOL OF BUSINESS, TALLAHASSEE, FLA.  
 President: EDWIN A. RUSSELL, 1922 South Meridian, Tallahassee, Fla.  
 Advisor: HOWARD ABEL, 515 Palm Ct., Tallahassee, Fla.  
 FLORIDA (Beta Eta, 1929), COLLEGE OF BUSINESS ADM., GAINESVILLE, FLA.  
 President: GEORGE M. DOW, 1316 N.W. 1st Ave., Gainesville, Fla.  
 Advisor: DONALD J. HART, 2717 S.W. Third Pl., Gainesville, Fla.  
 GEORGIA STATE (Kappa, 1921), SCHOOL OF BUSINESS ADMINISTRATION, ATLANTA, GA.  
 President: CHARLES S. DAVIS, 1275 Park Ave., S.E., Atlanta 15, Ga.  
 Advisor: STUART SCHWARZSCHILD, 78 Carlton Dr., NE, Atlanta, Ga.  
 Chapter Quarters: 124 Ivey St., Atlanta 3, Ga.  
 GEORGIA (Pi, 1922), COLLEGE OF BUSINESS ADM., ATHENS, GA.  
 President: ROLAND T. HELMS, JR., 224 S. Milledge Ave., Athens, Ga.  
 Advisor: LAWRENCE F. PINSON, 185 S. Findley, Athens, Ga.  
 Chapter House: 224 S. Milledge Ave., Athens, Ga.  
 MIAMI (Beta Omega, 1948), SCHOOL OF BUSINESS ADM., CORAL GABLES, FLA.  
 President: MARTIN S. GANS, 2154 S.W. 16th St., Miami 45, Fla.  
 Advisor: CHARLES F. EYRE, 704 Ashe, Coral Gables, Fla.; Manuel I. Zaiac, 627 Ashe, Coral Gables, Fla.  
 NORTH CAROLINA (Alpha Lambda, 1925), SCHOOL OF BUSINESS ADM., CHAPEL HILL, N.C.  
 President: KENNETH R. MILLER, 111 Pickard Lane, Chapel Hill, N.C.  
 Advisor: WILLIAM L. IVEY, 711 Greenwood Rd., Chapel Hill, N.C.  
 Chapter House: 111 Pickard Lane, Chapel Hill, N.C.  
 SOUTH CAROLINA (Beta Gamma, 1929), SCHOOL OF BUSINESS ADM., COLUMBIA, S.C.  
 President: KENNETH H. LESTER, Box 2539, University of S.C., Columbia, S.C.  
 Advisor: ROBERT L. ARMSTRONG, JR., 6512 Merrill Rd., Columbia, S.C.  
 Chapter House: 1710 College St., Columbia, S.C.

**TENNESSEE** (Alpha Zeta, 1924), COLLEGE OF BUSINESS ADM., KNOXVILLE, TENN.  
 President: JAMES E. SHAWN, 2000 Lilly Ave., Knoxville, Tenn.  
 Advisor: ALBERT W. PATRICK, 301 Portsmouth Rd., Knoxville, Tenn.

**VIRGINIA** (Alpha Xi, 1925), SCHOOL OF COMMERCE, CHARLOTTESVILLE, VA.  
 President: FRANCIS M. KOENIG, 1862 Field Rd., Charlottesville, Va.

**WAKE FOREST** (Gamma Nu, 1950), SCHOOL OF BUSINESS ADM., WAKE FOREST, N.C.  
 President: VICKEY R. EAGLE, Apt. 203A, Faculty Dr., Winston-Salem, N.C.  
 Advisor: LYELL J. THOMAS, Route 1, Box 364, Winston-Salem, N.C.  
 Chapter Quarters: Deltasig Room, Wake Forest College, Winston-Salem, N.C.

## EAST CENTRAL REGION

**REGIONAL DIRECTOR:** ROBERT F. ANDREE, Beta Tau, 349 Justo Lane-Seven Hills, Cleveland 31, Ohio.

**DISTRICT DIRECTORS:** ANDREW T. FOGARTY, 1308 Voll Rd., Cincinnati 30, Ohio; STEPHEN J. GABAY, JR., Berwick Realty Co., 2679 E. Main St., Columbus 9, Ohio; NICHOLAS IPPOLITO, 102 E. State St., Ithaca, N.Y.

**BALL STATE** (Epsilon Xi, 1962), DEPARTMENT OF BUSINESS EDUCATION, MUNCIE, IND.  
 President: WILLIAM E. SMITH, 1027½ N. Elm St., Muncie, Ind.  
 Advisor: JOSEPH W. JACKSON, Department of Business Education, Ball State Teachers College, Muncie, Ind.

**BUFFALO** (Alpha Kappa, 1925), SCHOOL OF BUSINESS ADMINISTRATION, BUFFALO, N.Y.  
 President: FRANK F. MANTONE, 7 Marine Dr., Apt. 9-H, Buffalo 2, N.Y.  
 Advisor: WILFRED B. RACE, 59 Greenfield Dr., Tonawanda, N.Y.

**CINCINNATI** (Alpha Theta, 1924), COLLEGE OF BUSINESS ADM., CINCINNATI, OHIO.  
 President: RICHARD D. HALEY, 731 Mt. Hope Rd., Cincinnati 4, Ohio.  
 Advisor: CHARLES V. SCHNABEL, 1566 Oak Knoll Dr., Cincinnati 25, Ohio.

**INDIANA STATE** (Delta Tau, 1959), DEPARTMENT OF BUSINESS, TERRE HAUTE, IND.  
 President: ROBERT J. MURRAY, 619 S. 5th St., Terre Haute, Ind.  
 Advisor: ROBERT P. STEINBAUGH, 1608 S. Center St., Terre Haute, Ind.

**INDIANA** (Alpha Pi, 1925), SCHOOL OF BUSINESS, BLOOMINGTON, IND.  
 President: JOHN HALL, 919 E. 10th., Bloomington, Ind.  
 Advisors: JAMES M. PATTERSON, 308 N. Overhill Dr., Bloomington, Ind.

**ITHACA** (Delta Lambda, 1957), DEPARTMENT OF ECONOMICS AND BUSINESS, ITHACA, N.Y.  
 President: WILLIAM R. WILCOX, JR., 204 Stewart Ave., Ithaca, N.Y.  
 Advisors: NORMAN F. JOYCE, 129 E. Main Ext., Dryden, N.Y.; NICHOLAS IPPOLITO, 102 East State St., Ithaca, N.Y.  
 Chapter House: 204 Stewart Ave., Ithaca, N.Y.

**KENT STATE** (Beta Pi, 1942), COLLEGE OF BUSINESS ADM., KENT, OHIO.  
 President: GARY E. PAYNE, 302 University Dr., Kent, Ohio.  
 Advisor: CHALMERS A. MONTEITH, JR., College of Bus. Adm., Kent State, Kent, Ohio.  
 Chapter House: 302 University Dr., Kent, Ohio.

**KENTUCKY** (Eta, 1920), COLLEGE OF COMMERCE, LEXINGTON, KY.  
 President: CURTIS G. QINDRY, 1844 Williamsburg Rd., Lexington, Ky.  
 Advisor: DONALD M. SOULE, College of Commerce, University of Kentucky, Lexington, Ky.

**MIAMI** (Alpha Upsilon, 1927), SCHOOL OF BUSINESS ADM., OXFORD, OHIO.  
 President: ROBERT L. RAFTER, 326 Ogden Hall, Miami U., Oxford, Ohio.  
 Advisor: HAROLD W. JASPER, 321 E. Vine, Oxford, Ohio.

**OHIO STATE** (Nu, 1921), COLLEGE OF COMMERCE AND ADM., COLUMBUS, OHIO.  
 President: DAVID S. BARNES, 144 E. 13th Ave., Columbus, Ohio.  
 Advisor: LEO D. STONE, 1466 Teeway Dr., Columbus, Ohio.  
 Chapter House: 144 E. 13th Ave., Columbus, Ohio.

**OHIO** (Alpha Omicron, 1925), COLLEGE OF COMMERCE, ATHENS, OHIO.  
 President: HARRY E. KEIM, 24 May Ave., Athens, Ohio.  
 Advisor: P. JOHN LYMBERPOULOS, P.O. Box 415, Athens, Ohio.

**PITTSBURGH** (Lambda, 1921), SCHOOL OF BUSINESS ADM., PITTSBURGH, PA.  
 President: JOSEPH E. WILSON, 106 Sheffield Dr., Irwin, Pa.  
 Advisors: CHARLES L. COOPER, 6 Schenk Dr., Pittsburgh 15, Pa.; ROBERT H. BALDWIN, 4415 Schenley Farms Ter., Pittsburgh 13, Pa.

**ROCHESTER TECH.** (Epsilon Lambda, 1961), SCHOOL OF BUSINESS, ROCHESTER, N.Y.

President: DAVID L. WROBEL, 9 Backus St., Rochester 8, N.Y.  
 Advisor: ARDEN L. TRAVIS, 147 S. Prospect St., Spencerport, N.Y.

**SHEPHERD** (Epsilon Kappa, 1961), DIVISION OF BUSINESS & EDUCATION, SHEPHERDSTOWN, W.Va.  
 President: ASHLEY W. SCARBOROUGH, Box 531, Shepherd College, Shepherdstown, W.Va.  
 Advisors: WADE W. BANKS, 218 King St., Shepherdstown, W.Va.; CHARLES PRINTZ, 629 S. George St., Charles Town, W.Va.

**WESTERN RESERVE** (Beta Tau, 1947), SCHOOL OF BUSINESS, CLEVELAND, OHIO.  
 President: ROBERT M. COURTRIGHT, 1551 Woodward Ave., Lakewood 7, Ohio.  
 Advisor: KENNETH LAWYER, School of Business, Western Reserve University, Cleveland, Ohio.

**WEST LIBERTY STATE** (Delta Omega, 1960), DIVISION OF BUSINESS, WEST LIBERTY, W.Va.  
 President: DAVID S. LOUDER, 420 S. Penn St., Wheeling, W.Va.  
 Advisor: THOMAS J. BABB, Box 1, West Liberty State College, West Liberty, W.Va.

## CENTRAL REGION

**REGIONAL DIRECTOR:** ROBERT J. ELDER, Theta, 17602 Glenmore Ave., Detroit, Mich.

**DISTRICT DIRECTORS:** DAN S. ROOT, 24770 Powers Rd., Farmington, Mich.; ROBERT F. REBECK, 107 N. Elmhurst Ave., Mt. Prospect, Ill.; DONALD GREEN, 5412 Eastland Way, Madison, Wis.

**DE PAUL** (Alpha Omega, 1928), COLLEGE OF COMMERCE, CHICAGO, ILL.  
 President: LAWRENCE A. METZ, 6115 W. Waveland Ave., Chicago 34, Ill.  
 Advisor: ROBERT L. HOEFER, 42 Fernwood Dr., Glenview, Ill.

**DETROIT** (Theta, 1921), COLLEGE OF COMMERCE AND FINANCE, DETROIT, MICH.  
 President: EDWARD J. CHERNEY, 27485 Garfield, Roseville, Mich.  
 Advisor: ROY A. KLAGES, College of Commerce & Finance, University of Detroit, Detroit 21, Mich.

**DETROIT** (Gamma Rho, 1950), EVENING COLLEGE OF COMMERCE AND FINANCE, DETROIT, MICH.  
 President: EDWARD S. RYCHLEWSKI, 8073 Almont, Detroit 34, Mich.  
 Advisor: WALTER W. COLBY, 4063 Cornwall, Berkley, Mich.

**FERRIS** (Delta Rho, 1959), DIVISION OF COMMERCE, BIG RAPIDS, MICH.  
 President: TERENCE B. DEWEERD, 420 Linden, Big Rapids, Mich.  
 Advisor: ARTHUR H. CROFT, 510 Linden St., Big Rapids, Mich.

**ILLINOIS** (Upsilon, 1922), COLLEGE OF COMMERCE AND BUSINESS ADM., URBANA, ILL.  
 President: BRIAN L. WALLEN, 306 N. Sheldon, Rantoul, Ill.  
 Advisor: RICHARD P. FELTON, 509 E. John St., Champaign, Ill.

**LOYOLA** (Gamma Pi, 1950), COLLEGE OF COMMERCE, CHICAGO, ILL.  
 President: JAMES G. ORCHOWSKI, 8411 S. Burnham Ave., Chicago 17, Ill.  
 Advisor: ARTHUR B. CROSS, 1163 Tower Rd., Winnetka, Ill.  
 Chapter House: 832 N. Wabash Ave., Chicago 2, Ill.

**MARQUETTE** (Delta, 1920), COLLEGE OF BUSINESS ADM., MILWAUKEE, WIS.  
 President: EDWARD T. YOCH, 3337 W. Highland Blvd., Milwaukee, Wis.  
 Advisor: BERNARD F. WARD, 4041 N. Downer Ave., Milwaukee 8, Wis.  
 Chapter House: 3337 W. Highland Blvd., Milwaukee, Wis.

**MICHIGAN STATE** (Gamma Kappa, 1949), SCHOOL OF BUSINESS AND PUBLIC SERVICE, EAST LANSING, MICH.  
 President: DAVID R. WRIGHT, 303 Bailey Hall, Michigan State Univ., Lansing, Mich.  
 Advisor: CAPTAIN ROBERT E. VISSCHER, 6112 Marscot Dr., Lansing, Mich.

**MICHIGAN** (Xi, 1921), SCHOOL OF BUSINESS ADM., ANN ARBOR, MICH.  
 President: EDWIN MARIN, 1910 Hill St., Ann Arbor, Mich.  
 Advisor: MARTIN R. WARSHAW, 2045 Norfolk, Ann Arbor, Mich.

**NORTHWESTERN** (Chicago Beta, 1914), SCHOOL OF BUSINESS, CHICAGO, ILL.  
 President: JON M. WATERS, 1531 Bonnie Brae, River Forest, Ill.  
 Advisor: CHARLES B. MILLER, 9259 S. Utica Ave., Evergreen Park, Ill.  
 Chapter House: 42 E. Cedar St., Chicago, Ill.

**NORTHWESTERN** (Evanston-Zeta, 1920), SCHOOL OF BUSINESS, EVANSTON, ILL.  
 President: JOHN A. PRESTBO, 1930 Sheridan Rd., Evanston, Ill.  
 Advisor: RICHARD GERFEN, 2501 Hartzell, Evanston, Ill.

Chapter House: 1930 Sheridan Road, Evanston, Ill.

**WAYNE STATE** (Gamma Theta, 1949), SCHOOL OF BUSINESS ADM., DETROIT, MICH.  
 President: RICHARD O. WILLIAMS, 1373 Russell, Lincoln Park, Mich.  
 Advisor: W. MARSHALL HEBBLEWHITE, 1387 Yosemite, Birmingham, Mich.  
 Chapter House: 924 W. Hancock, Detroit 1, Mich.

**WESTERN MICHIGAN** (Epsilon Omicron, 1962), SCHOOL OF BUSINESS, KALAMAZOO, MICH.  
 President: EDWARD S. MOERSCH, 807 Oakland Dr., Kalamazoo, Mich.  
 Advisor: FREDERICK EVERETT, 926 W. Main, Kalamazoo, Mich.

**WISCONSIN** (Psi, 1923), SCHOOL OF COMMERCE, MADISON, WIS.  
 President: JOHN F. HAERBECKER, 132 Breese Terr., Madison 5, Wis.  
 Advisor: CHARLES CENTER, University of Wisconsin, Commerce Building, Madison, Wis.  
 Chapter House: 132 Breese Terrace, Madison, Wis.

## SOUTH CENTRAL REGION

**REGIONAL DIRECTOR:** MAX BARNETT, JR., Gamma Mu, 5534 S. Galvez St., New Orleans 25, La.

**DISTRICT DIRECTORS:** DANIEL L. WIGLEY, 226 Mayfair Dr., Shreveport, La.; GEORGE E. RAGLAND, Box 140, Rt. 1, Millington, Tenn.

**ALABAMA** (Alpha Sigma, 1926), SCHOOL OF COMMERCE AND BUSINESS ADM., TUSCALOOSA, ALA.  
 President: ANDREW J. GENTRY, JR., Box 4394, University Ala.  
 Advisor: ROBERT B. SWEENEY, Box 6271, University Ala.

**AUBURN** (Beta Lambda, 1931), DEPARTMENT OF ECONOMICS AND BUSINESS ADM., AUBURN, ALA.  
 President: JAMES C. WHATLEY, JR., 518 N. Ross Ext., Auburn, Ala.  
 Advisor: ROBERT O. BOSTON, 445 S. College St., Auburn, Ala.

**LOUISIANA TECH** (Beta Psi, 1948), SCHOOL OF BUSINESS ADM., RUSTON, LA.  
 President: EMMETT E. WRIGHT, 108 S. Farmer-ville St., Ruston, La.  
 Advisor: WILLIAM S. KNIGHT, Westwood Hills, Ruston, La.

**LOUISIANA STATE** (Beta Zeta, 1929), COLLEGE OF COMMERCE, BATON ROUGE, LA.  
 President: GUY CAMPBELL, JR., Box 8487, LSU, Baton Rouge, La.

**LOUISIANA STATE** (Epsilon Nu, 1962), COLLEGE OF BUSINESS ADMINISTRATION, NEW ORLEANS, LA.  
 President: PETER M. PERICONE, 3149 N. Villere St., New Orleans, La.  
 Advisor: JOHN E. ALTAZAN, Dean, College of Business Administration, Louisiana State University of New Orleans, New Orleans, La.

**LOYOLA** (Delta Nu, 1958), COLLEGE OF BUSINESS ADM., NEW ORLEANS, LA.  
 President: LEO J. GIROIR, JR., 2527 N. Roman St., New Orleans, La.  
 Advisor: GEORGE W. LEFTWICH, 6708 General Diaz St., New Orleans, La.

**MEMPHIS STATE** (Gamma Zeta, 1949), SCHOOL OF BUSINESS ADM., MEMPHIS, TENN.  
 President: HUGH W. BLACKARD, 972 Brower, Memphis, Tenn.  
 Advisor: HERBERT J. MARKLE, 1280 W. Crestwood Dr., Memphis, Tenn.

**SOUTHERN MISSISSIPPI** (Gamma Tau, 1950), SCHOOL OF COMMERCE AND BUS. ADM., HATTIESBURG, MISS.  
 President: DAVID K. COBB, Box 946, Southern Station, Hattiesburg, Miss.  
 Advisor: M. P. WEHLING, Southern Station, Box 76, Hattiesburg, Miss.

**MISSISSIPPI STATE** (Gamma Delta, 1949), SCHOOL OF BUSINESS AND INDUSTRY, STATE COLLEGE, MISS.  
 President: WILLIAM C. DOWNING, JR., Box 535, Kappa Alpha House, State College, Miss.  
 Advisor: WILLIAM A. SIMMONS, Box 1496, State College, Miss.

**MISSISSIPPI** (Alpha Phi, 1927), SCHOOL OF COMMERCE AND BUS. ADM., OXFORD, MISS.  
 President: ALBERT B. LUM, Box 4373, University, Miss.  
 Advisor: ALLEN T. BARR, School of Business, University, Miss.

**TULANE** (Gamma Mu, 1949), SCHOOL OF BUSINESS ADMINISTRATION, NEW ORLEANS, LA.  
 President: ROY NOLAN SELLERS, JR., 836 State St., New Orleans, La.  
 Advisor: PAUL C. TAYLOR, 7617 Jeannette, New Orleans, La.

## MIDWESTERN REGION

**REGIONAL DIRECTOR:** LAVERNE A. COX, Alpha Delta, 1435 L St., Lincoln, Neb.

**DISTRICT DIRECTORS:** CARL E. BOLFE, JR., 836 W. 57th Ter., Kansas City, Mo.; LOUIS

LENHART, 4525 Grand, Des Moines, Iowa; PATRICK MURPHY, 14888 Phelps Dr., Bridgeton, Mo.; RONNIE G. SMITH, Delta Epsilon, 2600 Garfield St., Lincoln, Neb.

CREIGHTON (Beta Theta, 1930), COLLEGE OF BUSINESS ADMINISTRATION, OMAHA, NEB.  
President: JOHN A. SEARL, 5227 Military, Omaha, Neb.  
Advisor: JOSEPH B. CONWAY, 102 N. 55th St., Omaha, Neb.

DRAKE (Alpha Iota, 1924), COLLEGE OF BUSINESS ADM., DES MOINES, IOWA  
President: ROBERT D. BROWN, 1430 48th St., Des Moines, Iowa.  
Advisor: SAMUEL K. MACALLISTER, 3700 88th St., Des Moines, Iowa.

IOWA (Epsilon, 1920), COLLEGE OF COMMERCE, IOWA CITY, IOWA.  
President: RICHARD C. WERNICK, 1106 E. College St., Iowa City, Iowa.  
Advisor: W. LEON PEARCE, 227 N. Riverside Dr., Iowa City, Iowa.

KANSAS (Iota, 1921), SCHOOL OF BUSINESS, LAWRENCE, KAN.  
President: JON LEE HOWELL, 1135 Maine, Lawrence, Kan.

MANKATO STATE (Epsilon Iota, 1960), DIVISION OF BUSINESS EDUCATION, MANKATO, MINN.  
President: JOHN G. GRIEP, 429 Cherry St., Mankato, Minn.  
Advisor: CECIL C. BIGELOW, 9 Bruce Ct., Mankato, Minn.

MINNESOTA (Alpha Epsilon, 1924), SCHOOL OF BUSINESS ADM., MINNEAPOLIS, MINN.  
President: DONALD L. IGENS, 1029 4th St., SE, Minneapolis, Minn.  
Chapter House: 1029 4th St., SE, Minneapolis, Minn.

MISSOURI (Alpha Beta, 1923), SCHOOL OF BUSINESS AND PUBLIC ADM., COLUMBIA, MO.  
President: STEPHEN W. MYERS, Delta Sigma Pi Desk, Room 112-B & PA, University of Missouri, Columbia, Mo.  
Advisors: ROYAL D. M. BAUER, Delta Sigma Pi Desk, Room 112-B&PA, U. of Missouri, Columbia, Mo.; ROBERT L. KVAM, Delta Sigma Pi Desk, Room 112-B&PA, U. of Missouri, Columbia, Mo.

NEBRASKA (Alpha Delta, 1924), COLLEGE OF BUSINESS ADM., LINCOLN, NEB.  
President: DONNE D. SLABY, 1141 H St., Lincoln 8, Neb.  
Advisor: ROBERT A. GEORGE, 2927 Plymouth, Lincoln, Neb.  
Chapter House: 1141 H St., Lincoln, Neb.

NORTH DAKOTA (Alpha Mu, 1925), COLLEGE OF BUSINESS AND PUBLIC ADMINISTRATION, GRAND FORKS, N.D.  
President: ARDEL E. JOHNSON, 218 N. 9th St., Grand Forks, N.D.  
Advisor: JAMES B. SPAULDING, 2025 University Ave., Grand Forks, N.D.

OMAHA (Gamma Eta, 1949), COLLEGE OF BUSINESS ADM., OMAHA, NEB.  
President: OLON P. ZAGER, 2028 N. 70th St., Omaha 4, Neb.  
Advisor: WILLIAM C. HOCKETT, 1706 N. 49th St., Omaha, Neb.

ST LOUIS (Beta Sigma 1948) SCHOOL OF COMMERCE AND FINANCE, ST. LOUIS, MO.  
President: FRANK E. GROSS, 3624 W. Pine, St. Louis 8, Mo.  
Advisor: STEPHEN W. VASQUEZ, 3674 Lindell Blvd., St. Louis 8, Mo.

SOUTH DAKOTA (Alpha Eta, 1924), SCHOOL OF BUSINESS, VERMILLION, S.D.  
President: WARREN W. WATERMAN, Box 297, Akron, Iowa  
Advisor: ROBERT L. JOHNSON, 410 Prentice, Vermillion, S.D.

WASHBURN (Delta Chi, 1960), DEPARTMENT OF ECONOMICS AND BUS. ADM., TOPEKA, KAN.  
President: RONALD M. ZINK, 3201 W. 29th, Apt. 4, Topeka, Kan.  
Advisor: WALTER M. HOLMES, 2304 Jewell, Topeka, Kan.

## SOUTHWESTERN REGION

REGIONAL DIRECTOR: JOE M. HEFNER, Beta Upsilon, 3103 42nd St., Lubbock, Tex.  
DISTRICT DIRECTORS: HENRY A. SHUTE, Delta Mu, Apartado, 82 Bis, Mexico 1, D.F., Mexico.  
CONNIE MACK McCOY, 1722 N.W. 20th St., Oklahoma City, Okla.  
MELVIN GARNER, 6612 Ave. U, Lubbock, Tex.  
JACK A. FINCHER, 3509 Gray Dr., Mesquite, Tex.  
FRANK L. STRONG, 1825 Great Ridge Dr., Dallas 28, Tex.  
EMORY C. WALTON, P.O. Box 6251, Waco, Tex.  
BAYLOR (Beta Iota, 1930), SCHOOL OF BUSINESS, WACO, TEX.  
President: CLARENCE D. ROBERTS, JR., 144 Penland, Baylor Univ., Waco, Tex.

Advisor: EDWIN L. CALDWELL, Dept. of Economics, Baylor U., Waco, Tex.

EAST TEXAS STATE (Delta Phi, 1960), DEPT. OF BUSINESS ADM., COMMERCE TEX.  
President: GORDON R. COX, Box 3552, East Texas Sta., Commerce, Tex.  
Advisors: KENNETH R. MCCORD, 1508 Hunt, Commerce, Tex.; EMMETT O. MCANALLY, Rt. 2, Commerce, Tex.

LAMAR STATE (Delta Eta, 1956), SCHOOL OF BUSINESS, BEAUMONT, TEX.  
President: ROLAND L. VOIGHT, 4655 Cheek St., Beaumont, Tex.  
Advisor: H. ALFRED BARLOW, 320 Iowa, Beaumont, Tex.

MEXICO CITY (Delta Mu, 1958), FOREIGN TRADE CENTER  
President: GLEN A. NELLE, 430 Cascada, Mexico 20, D.F., Mexico.  
Advisor: DAVID M. CLARK, Mexico City College, Km. 16 Carretera Mexico-Toluca, Mexico 10, D.F., Mexico

MIDWESTERN (Epsilon Zeta, 1960), DIVISION OF BUSINESS, WICHITA FALLS, TEX.  
President: HOWARD L. MERCER, Rt. 2, Box 98, Iowa Park, Tex.  
Advisor: FRANKLIN R. MADERA, Head, Division of Business, Midwestern Univ., Wichita Falls, Tex.

NORTH TEXAS STATE (Delta Epsilon, 1954), SCHOOL OF BUSINESS ADM., DENTON, TEX.  
President: ROBERT DALE WOOTTON, 1406 W. Hickory, Denton, Tex.  
Chapter House: 1406 W. Hickory, Denton, Tex.

OKLAHOMA CITY (Delta Theta, 1956), SCHOOL OF BUSINESS, OKLAHOMA CITY, OKLA.  
President: ANTONIO SHELBY, 1536 N.W. 24th Oklahoma City, Okla.  
Advisors: WHEELER F. FRISBEE, Oklahoma City University, Oklahoma City, Okla.  
Advisor: CONNIE MACK McCOY, 1447 N.W. 90th St., Oklahoma City, Okla.

OKLAHOMA STATE (Gamma Epsilon, 1949), COLLEGE OF BUSINESS, STILLWATER, OKLA.  
President: ERNEST L. BURKHART, 808 Connell, Stillwater, Okla.  
Advisor: Don Albert Persons, 121 W. Hartman, Stillwater, Okla.

OKLAHOMA (Beta Epsilon, 1929), COLLEGE OF BUSINESS ADM., NORMAN, OKLA.  
President: JIMMIE L. COLE, Lincoln House, U. of Okla., Norman, Okla.  
Advisor: GAYLORD JENTZ, 1601 Normandie Dr., Norman, Okla.

SAM HOUSTON (Epsilon Mu, 1962), DEPARTMENT OF BUSINESS ADMINISTRATION, HUNTSVILLE, TEX.  
President: TERENCE K. LEE, 1228 17th St., Huntsville, Tex.  
Advisor: ERNEST R. O'QUINN, Department of Business Administration, Sam Houston State Teachers College, Huntsville, Tex.

SOUTHERN METHODIST (Beta Phi, 1948), SCHOOL OF BUSINESS ADM., DALLAS, TEX.  
President: DENNY M. ANDERS, Box 1221, Southern Methodist University, Dallas, Tex.  
Advisor: EUGENE S. WARD, 132 Boaz Hall, SMU, Dallas, Tex.

TEXAS CHRISTIAN (Delta Upsilon, 1959) SCHOOL OF BUSINESS, FORT WORTH, TEX.  
President: GARY A. BRILL, Box 29439 TCU Sta., Fort Worth, Tex.  
Advisor: O. HOYT GIBSON, 3520 Hilltop Rd., Fort Worth, Tex.

TEXAS TECH (Beta Upsilon, 1947), SCHOOL OF BUSINESS ADMINISTRATION, LUBBOCK, TEX.  
President: RAY O. LUBKE, Box 4042, Tech. Sta., Lubbock, Tex.  
Advisor: CHESTER BURL HUBBARD, 2515 33rd St., Lubbock, Tex.  
Chapter Quarters: 1502 Ave. X, Lubbock, Tex.

TEXAS (Beta Kappa, 1930), COLLEGE OF BUSINESS ADM., AUSTIN, TEX.  
President: DON H. KELLY, 3505 Grooms, Austin, Tex.  
Advisor: JOHN S. LUDLUM, 2401 Winstead Lane, Apt. 6, Austin, Tex.

TULSA (Beta Chi, 1948), COLLEGE OF BUSINESS ADM., TULSA, OKLA.  
President: DENNIS C. RADDANT, 3223 E. 7th, Tulsa, Okla.  
Advisors: JOHN D. GEMMILL, 5371 E. 27th Pl., Tulsa, Okla.; WILLIAM CAMPBELL, 5113 E. 27th Pl., Tulsa, Okla.

## INTER-MOUNTAIN REGION

REGIONAL DIRECTOR: WARREN E. ARMSTRONG, Gamma Iota, 1002 Idlewild Lane, S.E., Albuquerque N.M.  
DISTRICT DIRECTORS: JAMES E. ADAMS, Gamma Phi, 3905 Jefferson, El Paso, Tex.; WILLIAM B. ARNOLD, Alpha Nu, 1151 S. Colorado Blvd., Denver, Colo.; CHARLES I. SUTTON, Gamma Omega, 5840 E. Windsor Ave., Scottsdale, Ariz.

ARIZONA STATE (Gamma Omega, 1951), COLLEGE OF BUSINESS ADM., TEMPE, ARIZ.  
President: CHARLES R. FLAKE, 1111 B N. 82nd St., Phoenix, Ariz.  
Advisor: DR. RALPH C. HOOK, JR., 1721 La-Rosa Dr., Tempe, Ariz.

ARIZONA (Gamma Psi, 1951), COLLEGE OF BUSINESS AND PUBLIC ADM., TUCSON, ARIZ.  
President: FREDERIC J. MONTGOMERY, 2100 E. 10th St., Tucson, Ariz.  
Advisors: ROBERT H. MARSHALL, Economics Dept., College of Business & Public Adm., University of Arizona, Tucson, Ariz.; WILLIAM T. FOSTER, JR., College of Business & Public Adm., University of Arizona, Tucson, Ariz.

COLORADO (Alpha Rho, 1928), SCHOOL OF BUSINESS, BOULDER, COLO.  
President: STEPHEN A. KILE, 914 Broadway, Boulder, Colo.  
Advisor: ROBERT G. AYER, 2880 20th St., Boulder, Colo.

DENVER (Alpha Nu, 1925), COLLEGE OF BUSINESS ADM., DENVER, COLO.  
President: JOHN C. FARLEY, 1055 Sherman St., Denver 3, Colo.  
Advisor: DELMAE D. HARTLEY, College of Business Administration, University of Denver, 1445 Cleveland Pl., Denver 2, Colo.

EASTERN NEW MEXICO (Epsilon Eta, 1960), SCHOOL OF BUSINESS AND ECONOMICS, PORTALES, N.M.  
President: GARY BOB LEE, Box 2787, E.N.M.U., Portales, N.M.  
Advisor: GENE W. HARRELL, 1415 S. Ave. I, Portales, N.M.

NEW MEXICO (Gamma Iota, 1949), COLLEGE OF BUSINESS ADM., ALBUQUERQUE, N.M.  
President: GORDON E. BLANKENSHIP, 108 1/2 Columbia, S.E., Albuquerque, N.M.  
Advisor: JAMES M. MUTTER, 256 Camino Tres, S.W., Albuquerque, N.M.

TEXAS WESTERN (Gamma Phi, 1951), DEPARTMENT OF ECONOMICS AND BUSINESS ADM., EL PASO, TEX.  
President: HECTOR R. VENEGAS, 1210 Moore St., El Paso, Tex.  
Advisor: ROBERT M. ESCH, 1403 Hawthorn, El Paso, Tex.

UTAH (Sigma, 1922), COLLEGE OF BUSINESS, SALT LAKE CITY, UTAH  
President: KIM P. LARSEN, 849 E. 6th, S, Salt Lake City, Utah.

## WESTERN REGION

REGIONAL DIRECTOR: BURELL O. JOHNSON, Alpha Sigma, c/o National Cylinder Gas Co., 1588 Doolittle Dr., San Leandro, Calif.  
DISTRICT DIRECTORS: R. NELSON MITCHELL, Chi, 550 California St., San Francisco 4, Calif.; ANDREW P. MARINCOVICH, Phi, 1222 Trotwood Ave., San Pedro, Calif. DOMINIC A. FANELLI, 1276 Lincoln Ave., San Jose, Calif.

CHICO STATE (Epsilon Theta, 1960), DIVISION OF BUSINESS, CHICO, CALIFORNIA.  
President: BRUCE W. McDOUGAL, 746 W. 2nd St., Chico, Calif.  
Advisor: HARRY L. JEFFERSON, 1834 Arbutus Ave., Chico, Calif.

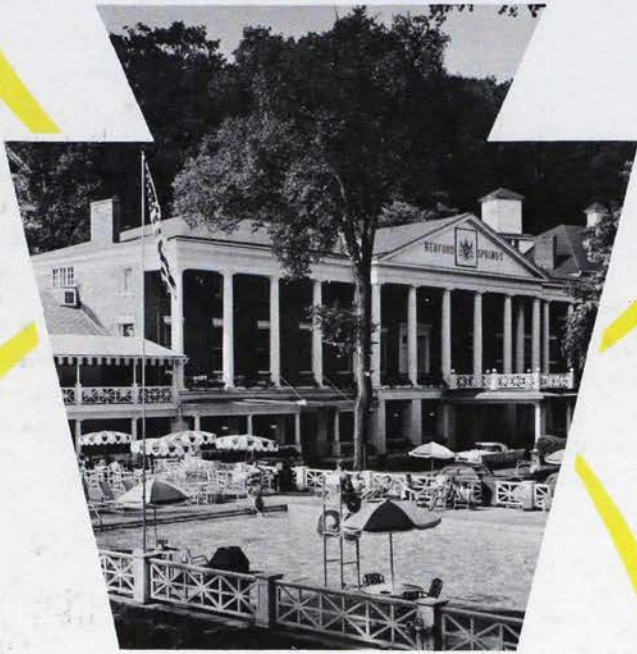
LOYOLA (Delta Sigma, 1959), COLLEGE OF BUSINESS ADMINISTRATION, LOS ANGELES, CALIF.  
President: RONALD L. SIEVERS, 9643 Arkansas, Bellflower, Calif.

NEVADA (Delta Pi, 1959), COLLEGE OF BUSINESS ADMINISTRATION, RENO, NEV.  
President: HARVEY M. LOSASSO, 329 Washington St., Reno, Nev.  
Advisors: KATHRYN DUFFY, College of Business Adm., University of Nevada, Reno, Nev.; ROBERT GOODELL, College of Business Adm., Univ. of Nevada, Reno, Nev. RICHARD WILSON, College of Bus. Adm., University of Nevada, Reno, Nevada

SAN FRANCISCO STATE (Delta Omicron, 1959), DIVISION OF BUSINESS, SAN FRANCISCO, CALIF.  
President: WILLIAM S. APPLETON, 161 Park Plaza Dr., Daly City, Calif.  
Advisor: FREDERICK A. WEBSTER III, 14 Tapia Dr., San Francisco 27, Calif.

SAN FRANCISCO (Gamma Omicron, 1950), COLLEGE OF BUSINESS ADM., SAN FRANCISCO, CALIF.  
President: RICHARD F. BARBAZETTE, Phelan Hall, U. of San Francisco, San Francisco 17, Calif.  
Advisor: JOSEPH P. SIMINI, 21 Sutro Hts. Ave., San Francisco, Calif.

SANTA CLARA (Gamma Xi, 1950), COLLEGE OF BUSINESS ADM., SANTA CLARA, CALIF.  
President: ROBERT L. FAGAN, Dunne 501, U. of Santa Clara, Santa Clara, Calif.  
Advisor: LOUIS BOITANO, College of Business Adm., U. of Santa Clara, Santa Clara, Calif.



Twenty Fourth  
Grand Chapter Congress

Bedford  
Springs  
HOTEL

BEDFORD, PENNSYLVANIA

August 19-23, 1963