

PETITION TO THE INTERNATIONAL  
FRATERNITY OF DELTA SIGMA PI

SUBMITTED BY BETA ALPHA EPSILON

EVANSVILLE, INDIANA

JANUARY 13, 1980

PETITION TO THE INTERNATIONAL  
FRATERNITY OF DELTA SIGMA PI

SUBMITTED BY BETA ALPHA EPSILON

Evansville, Indiana

January 15, 1980

For their generous help in making this petition a reality, Beta Alpha Epsilon extends a special thanks to:

Ligon Specialized Hauler

Vincent Seibert

Ralph Olmsted

Dean Lynch

Dr. Eckles

Dr. Zimmer

Bob Smith

Mike Tillar

Jeff Philippi

BAE's founding members

and Beth, Donna, Barb, Don, Karen, Keith,

Sandy, Sharon, George, Randy, Susie and

Jamie.



## TABLE OF CONTENTS

Petition and Signature Pages

Letters of Recommendation

The City of Evansville

The University of Evansville

History

Campus

Statistics

The School of Business Administration

History

Faculty

Beta Alpha Epsilon

History

Aims and Purposes

Members

Faculty

The Board of Directors of the International Fraternity of Delta Sigma Pi, Inc. hereby petitions for a charter to establish a chapter of the International Fraternity of Delta Sigma Pi, Inc. on the campus of University of Oregon at Eugene, Oregon.

Beta Alpha Epsilon Chapter of the International Fraternity of Delta Sigma Pi, Inc. is hereby petitioning for the purpose of affiliating with Delta Sigma Pi, International Fraternity. The proposed name, purposes, and requirements of the chapter are as follows: Name: Beta Alpha Epsilon Chapter of the International Fraternity of Delta Sigma Pi, Inc. Purpose: To carry out the ideals of Delta Sigma Pi, Inc. in regard to our affiliation, the purposes and objects of Delta Sigma Pi, Inc. are to uphold the rules and regulations as set forth in the Constitution and Bylaws of the International Fraternity of Delta Sigma Pi, Inc. and further to carry out the traditions and purposes.

PETITION TO THE INTERNATIONAL FRATERNITY  
OF DELTA SIGMA PI

SUBMITTED BY BETA ALPHA EPSILON

*[Faint signatures and text, likely bleed-through from the reverse side of the page]*

To The Board of Directors Of The International  
Fraternity Of Delta Sigma Pi

We, the undersigned brothers and sisters of Beta Alpha Epsilon hereby earnestly petition for a charter to establish a chapter of the International Fraternity of Delta Sigma Pi on the campus of University of Evansville at Evansville, Indiana.

Beta Alpha Epsilon was formed exclusively for the purpose of affiliation with Delta Sigma Pi Professional Fraternity. The present aims, purposes, and requirements reflected in our Constitution and Bylaws were patterned after and are commensurate with the same high ideals of Delta Sigma Pi. In pursuit of the affiliation, the brothers and sisters of Beta Alpha Epsilon pledge to uphold the rules and regulations as set forth in the Constitution and Bylaws of the International Fraternity of Delta Sigma Pi, and further to carry out its traditions and programs.

Witness our signatures:

Donald M. Meyer  
President

Richard Stuebel  
Senior Vice President

Donna L. Kinsery  
Secretary

Keith B. Schepers  
Treasurer

Douglas D. Stewart  
Chancellor

Elizabeth E. Day  
C. E. I. Chairwoman

Edward H. Huenstein  
V. P.-Pledge Education

Karen S. Hoeverner  
V. P.-Professional Activities

Robert W. Ellis  
Advisor

Michael A. Zimmer  
Advisor

Jaryl A. Lynch

Karen S. Guagenti

Diana Zivanovich

Melitta J. Kessner

Randal R. Copley

John E. Stollenberger

Richard Trent

Martha S. Finrock

Jamie L. Maier

Glen Mabe

Sandra L. Elliott

Jed W. Hutson

Janice Meyer

Susan Cassidy

Bud Harris

Teresa Agnew

Susan Worthington

Susie Oswald

Edward H. Hauenstein

Cathy Helpling

Rickey D. Heger

Stephen Bueckler

Karen Bueckler

Melanie L. Suber

Sharon Hopf

Gail Hopf

Barbara McKenzie

Teri De St. Jean

Carolyn A. Hoover

Dana Perkins

Janet Hackenbrocht

Kim Beed

Crystal Z. Zimmerman

Evi Lee

Danna K. Clipp

Rebecca May Goforth



Jim Ozya

Jennifer Brown



State of Michigan  
1111 State St.  
120 E. Main Street  
Lansing, MI 48201

Dear Mr. [Name]:

It is with pleasure and confidence that I endorse the application of [Name] for membership in the [Organization]. [Name] has a strong and long-standing record of service to the community and has demonstrated their commitment to the [Organization].

LETTERS OF RECOMMENDATION

I am sure that [Name] will be a valuable member of the [Organization]. The [Organization] will benefit from [Name]'s skills and experience. I am sure that [Name] will be a valuable member of the [Organization].

Sincerely,  
  
[Name]

**University of Evansville**

*Wallace B. Graves, President*

Post Office Box 329  
Evansville, Indiana 47702  
Telephone (812) 479-2151

January 10, 1980

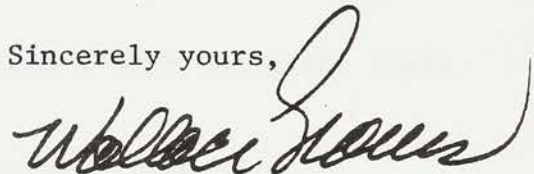
Board of Directors  
Delta Sigma Pi  
330 South Campus Avenue  
Oxford, Ohio 45056

To whom it may concern:

It is with pleasure and confidence that I endorse the application of members of Beta Alpha Epsilon, a colony of Delta Sigma Pi for full fraternity status. The members have a strong continuing organization and have demonstrated their commitment to the purposes of Delta Sigma Pi.

I urge you to act favorably upon this application. The University of Evansville pledges its full support to this organization.

Sincerely yours,



Wallace B. Graves

bmr

# University of Evansville

School of Business Administration

Post Office Box 329  
Evansville, Indiana 47702  
Telephone (812) 479-2851



January 10, 1980

Board of Directors  
Delta Sigma Pi  
330 South Campus Avenue  
Oxford, Ohio 45056

To whom it may concern:

Beta Alpha Epsilon, a colony of Delta Sigma Pi is petitioning to be recognized as one of your chapters here at the University of Evansville. I heartily endorse their petition. The members of Beta Alpha Epsilon are a fine, public spirited group of young people. They have been very willing to assist the School of Business in any way and we have availed ourselves of their offers many times. The Beta Alpha Epsilon group was very helpful in the launching of our new "Hulman Lecture Series in Free Enterprise" and is ensuring its continued success.

This group will represent you well and I hope you grant their petition.

Sincerely yours,

A handwritten signature in cursive script that reads "Gary A. Lynch".

Gary A. Lynch, Dean  
School of Business Administration

abk



# University of Evansville

*School of Business Administration*

Post Office Box 329

Evansville, Indiana 47702

Telephone (812) 479-2851



January 10, 1980

Board of Directors  
Delta Sigma Pi  
330 South Campus Avenue  
Oxford, Ohio 45056

Gentlemen:

In my capacity as faculty advisor to the Beta Alpha Epsilon chapter at the University of Evansville, I hereby endorse the organization as it seeks affiliation with Delta Sigma Pi.

The sound leadership and dedicated members of the local chapter serve to make it a viable and potentially active affiliate of the national fraternity.

Sincerely,

A handwritten signature in cursive script that reads "Michael A. Zimmer".

Michael A. Zimmer  
Assistant Professor of Economics

abk

# University of Evansville

School of Business Administration

Post Office Box 329

Evansville, Indiana 47702

Telephone (812) 479-2851



January 10, 1980

Board of Directors  
Delta Sigma Pi  
330 South Campus Avenue  
Oxford, Ohio 45056

Gentlemen:

As a bona fide member of Delta Sigma Pi and as a faculty sponsor of Beta Alpha Epsilon fraternity here at the University of Evansville, I would like to recommend the local fraternity's admittance to membership in Delta Sigma Pi. Having met all minimum standards imposed by national, I so recommend the local fraternity be installed.

Sincerely,

A handwritten signature in cursive script, appearing to read "Robert W. Eckles".

Robert W. Eckles  
Professor of Marketing

abk



STUDENT  
**CONGRESS**

P. O. Box 329 Evansville, Indiana 47702



January 10, 1980

Board of Directors  
Delta Sigma Pi  
320 South Campus Avenue  
Oxford, Ohio 45056

Sirs:

As President of Student Congress, it is my pleasure to be an advocate of the Beta Alpha Epsilon petition for admittance in Delta Sigma Pi. Our members of Beta Alpha Epsilon have shown sufficient interest and integrity in furthering the potential for both the intellectual and professional growth of the Business students here on the University of Evansville campus.

I think you would find our colony a very valuable addition to your organization as I can recommend them for your consideration without reserve.

Sincerely,

Susie Oswald  
Student Congress  
University of Evansville



## THE CITY OF EVANSVILLE

## The City of Evansville, Indiana

Evansville, Indiana is a progressive community of 140,000 in the southwestern corner of the state. By virtue of its location, the city serves as the cultural and economic center of the Tri-State region encompassing parts of Indiana, Illinois and Kentucky.

Metropolitan Evansville, incorporated in 1847, is located on the banks of the Ohio River in the heart of the great midwest agricultural belt. Its founder, Hugh McGary, had the idea the horseshoe bend of the Ohio was a fine site for a town. On March 27, 1812 Hugh McGary purchased 200 acres from the government. It was then nothing but forest. Today these 200 acres are the center of downtown Evansville.

In 1813 the Indiana territorial legislature shaped southwestern Indiana into two counties, Gibson and Warrick. McGary's cabin was located in Warrick County. He realized he would have an advantage in developing his acreage if it were the site of the county seat. He met with the Warrick County commissioners soon after. Escorting him was a close friend and advisor, Colonel Robert M. Evans, a prominent member of the territorial legislature and state militia. McGary offered the commissioners 100 acres of land as the future site of the new county seat.

On June 14, 1814 it was formally accepted and the new town was christened Evansville, after Col. Evans. However, McGary's plan did not go as he had originally envisioned.

In the following year Warrick County was divided to create three counties- Warrick, Posey and Perry -leaving Evansville at the southwest corner rather than the center of Warrick County.

McGary, again, secured the aid of a powerful friend. With the help of Ratliff Boon, an influential figure in the territorial legislature, Vanderburgh County was created in 1818 with Evansville at the central point along its southern most boundary.

Evansville was designated the site of the final basin of the Erie Canal when the state government in 1836 appropriated \$20 million to build roads and canals throughout the state. Although the project was a fiasco it stimulated growth in Evansville, for both Evansville and the Ohio River were becoming more important to the developing nation. The first industries, opened in 1837, were cabinet shops attracted by extensive hardwood forests. A railroad was completed in 1853. Ohio River transportation gained rapidly and Evansville was made a River Port of Entry in 1856.

Wholesale trade flourished. Coal mining was commercialized in 1866. Industrial employment climbed from 917 to 7435 in 1890, working in furniture, stoves, farm equipment, iron, flour, cotton, tobacco, pottery and other industries. The first successful oil well was drilled in 1929.

The advantages of transportation, rich farm and forestland, the vital oil-coal-water-power complex, and skilled workers remain basic factors in today's prosperous economy.



UNIVERSITY OF EVANSVILLE

The University of Evansville is a private, non-sectarian, co-educational institution of higher learning located in Evansville, Indiana. The University is a member of the Association of American Universities and the Association of Colleges and Universities. It is a member of the Association of Christian Colleges and Universities, the Association of Independent Colleges and Universities, the Association of Private Business Schools, the Association of Southern Colleges and Schools, the Association of Universities and Colleges of Business, and the Association of Universities and Colleges of Planning and Design.

**UNIVERSITY OF EVANSVILLE**

The University of Evansville offers a wide range of undergraduate and graduate programs. The University is a member of the Association of American Universities and the Association of Colleges and Universities. It is a member of the Association of Christian Colleges and Universities, the Association of Independent Colleges and Universities, the Association of Private Business Schools, the Association of Southern Colleges and Schools, the Association of Universities and Colleges of Business, and the Association of Universities and Colleges of Planning and Design.

The University of Evansville was founded in 1846 by Rev. John W. McGuffey, D.D., a prominent educator and author of the McGuffey Eclectic Readers. The University is a member of the Association of American Universities and the Association of Colleges and Universities. It is a member of the Association of Christian Colleges and Universities, the Association of Independent Colleges and Universities, the Association of Private Business Schools, the Association of Southern Colleges and Schools, the Association of Universities and Colleges of Business, and the Association of Universities and Colleges of Planning and Design.

The university and its history are...

## The University of Evansville

The University of Evansville is a private, fully-accredited Methodist church-related University located in Evansville, Indiana. The University offers over 60 Bachelors' degrees and 30 Associate degrees through six academic divisions - the School of Business Administration, of Education, of Engineering, of Nursing and the Colleges of Fine Arts and Arts and Sciences. Over 6000 students attend day and evening classes as full or part-time students.

The predecessor of the University of Evansville, Moores Hill College (1856-1917), opened September 9, 1856 in a three story bark building in Moores Hill, Indiana. Known early in its history as Moores Hill Male and Female Collegiate Institution, the institution has one of the first coeducational colleges in the United States. The school's coeducational policy insured its survival through the Civil War when the call to battle contributed to the closing of 80% of all men's colleges. Despite perilous times, the tiny college survived to meet the twentieth century.

The urbanization and quickening industrial

pace of the new century caused immense difficulties for Moores Hill, situated in a small village which lacked electric lights and indoor plumbing. The enrollment figures declined steadily, tuition and gifts fell and the endowment fund principal was liquidated to meet operating expenses. In 1915 the main building was destroyed by fire. In an effort to stay open, the College converted to a junior college curriculum during the summer of 1916. September saw the beginning of classes in only one building, with a faculty of 15, and only 190 students; only 25 of whom being college rank, the remainder being preparatory-of high school students.

A prominent Evansville citizen, George C. Clifford, suggested moving to the present location and the City of Evansville raised the needed funds. Moores Hill College had lived for exactly sixty-one years and granted degrees to 487 men and women before it expired, to be "born again" as Evansville College.

When the College reopened in 1919, its situation was not too far advanced over Moores Hill. It had just one building on Vine Street between Fifth and Sixth streets, now the site of the new telephone building. There were 104 students and a full-time faculty of nine. Dr. Alfred Hughes was the first



president and Charles E. Torbet was dean and registrar. Among the faculty were Dr. George B. Franklin, English; Dr. A. J. Bigney, biology; and Olaf Hovda, math and physics. Each now has a building on the campus named in his honor.

For three academic years the Vine Street building was home to the college. But finally, in May, 1922, the long awaited Administration Hall was completed.

In the summer of 1927, President Hughes left to become president of Hamline University in Minnesota. His successor, Earl E. Harper (1927-1936), reorganized the college forcing the departments of engineering, business administration and education back into the confines of a liberal arts college. He undertook this reorganization deliberately to achieve the accreditation of the College by the North-Central Association of Colleges. This approval had been sought by Pres. Hughes in 1926 but was denied because of lack of sufficient endowment. By 1931 the accrediting committee of the Association indicated that the stability of income was **more** indicative of educational excellence than endowment. In March, 1931, the College was admitted to the North-Central Association.

For 25 years Administration Hall stood alone on the campus to be joined finally in 1947 by the Engineering and Science building and in 1951 by the McCurdy Alumni

Memorial Student Union. Funds for these buildings were raised through the leadership of Lincoln B. Hale, president from 1940 to 1954.

With the coming of President Melvin Hyde in 1955, a great period of building began. When he retired in 1967 there had been added to the campus Clifford Memorial Library, Hughes Hall, Moore Hall, the College apartments, Krannert Hall of Fine Arts and Wheeler Concert Hall, Carson Center, Harper Dining Center, Neu Chapel, Hale Hall, Brentano Hall, and Shanklin Theatre. It was during his tenure also that the college became the University of Evansville with the approval of the Indiana State Legislature.

Dr. Wallace B. Graves, who became the school's sixth president in August of 1967, has steered the University toward national and international prominence and the beginning of new growth. Under his administration the University has developed into three colleges and five schools--the Colleges of Arts and Sciences, Fine Arts, and Alternative Programs and the Schools of Business, Education, Nursing, Engineering and Graduate Studies-- and has developed the Harlaxton Study Center in Grantham, England.

## Presidents

### Evansville College

Alfred Hughes	1919 - 1927
Earl Harper	1927 - 1936
Charles Torbet (acting)	Feb-Sept. 1936
Marvin Smith	1936 - 1940
Lincoln Hale	1940 - 1954
Dean Long (acting)	1954 - 1955
Melvin Hyde	1955 - 1967

### University of Evansville

Wallace Graves	1967 -
----------------	--------

Special Thanks to  
Ralph Olmsted  
University Archivist

THE CAMPUS

THE CAMPUS

The beginning of the year was a busy one for the students and faculty alike. The first semester was a successful one for the school. The students were well prepared for the year ahead. The faculty was also well prepared. The school was a success in every way. The students were well prepared for the year ahead. The faculty was also well prepared. The school was a success in every way.

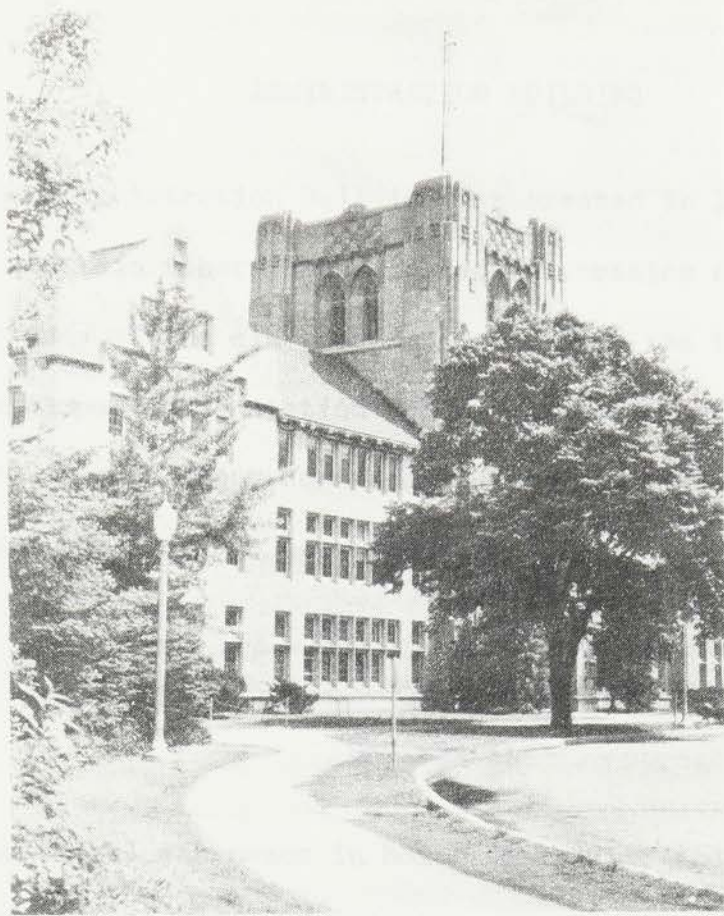




## THE UNIVERSITY OF EVANSVILLE

### Main Campus

The University of Evansville's home campus covers 75 acres and features 5 residence halls, 10 major classroom buildings and a library containing over 230,000 volumes. A new science/engineering building was completed in 1978. The campus is characteristic of a large city park, with more than 80 different species of trees shading its Gothic architecture.



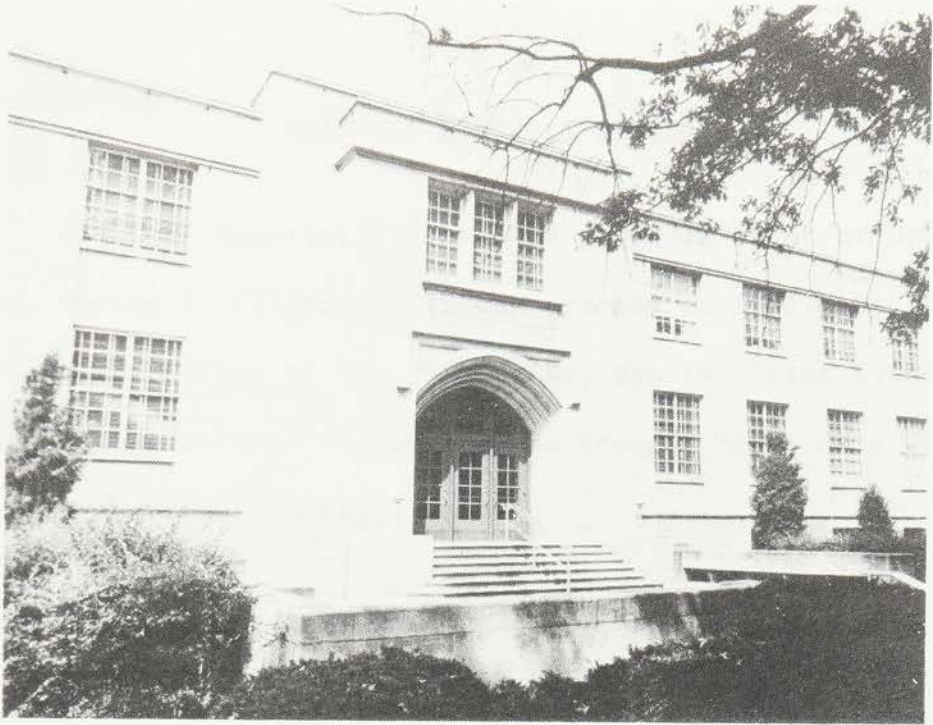
## ADMINISTRATION BUILDING

The Administration Building was erected in 1922. The ground and main floors house the administration offices, as well as many of the classrooms. Located on the third floor are the campus radio station WUEV, classrooms, and faculty offices. Fourth floor contains the Communications Department and the Language Department and lab.

## NEU CHAPEL

Neu Chapel was named in honor of Trustee and Mrs. Adam Neu and built in 1966. In addition to the sanctuary, the building houses the Office of the University Chaplain and the Department of the Philosophy and Religion.





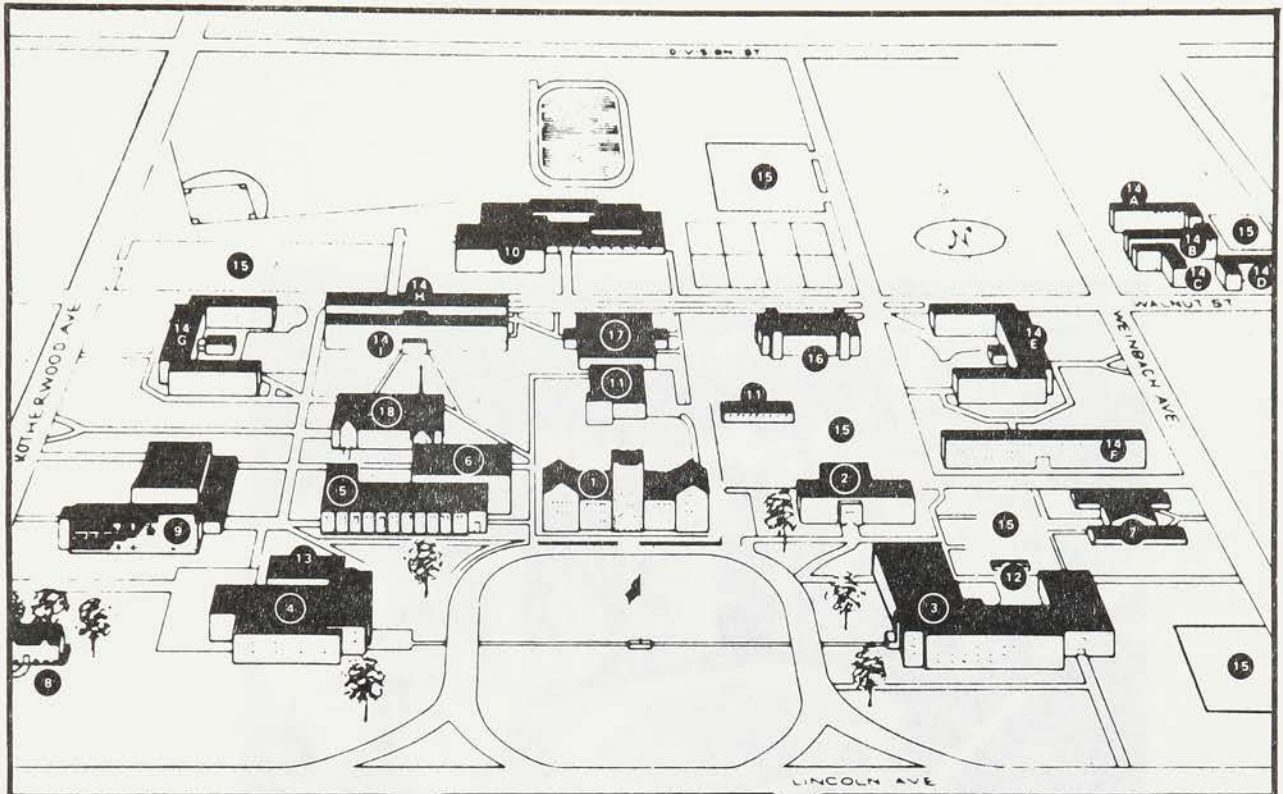


### CLIFFORD MEMORIAL LIBRARY

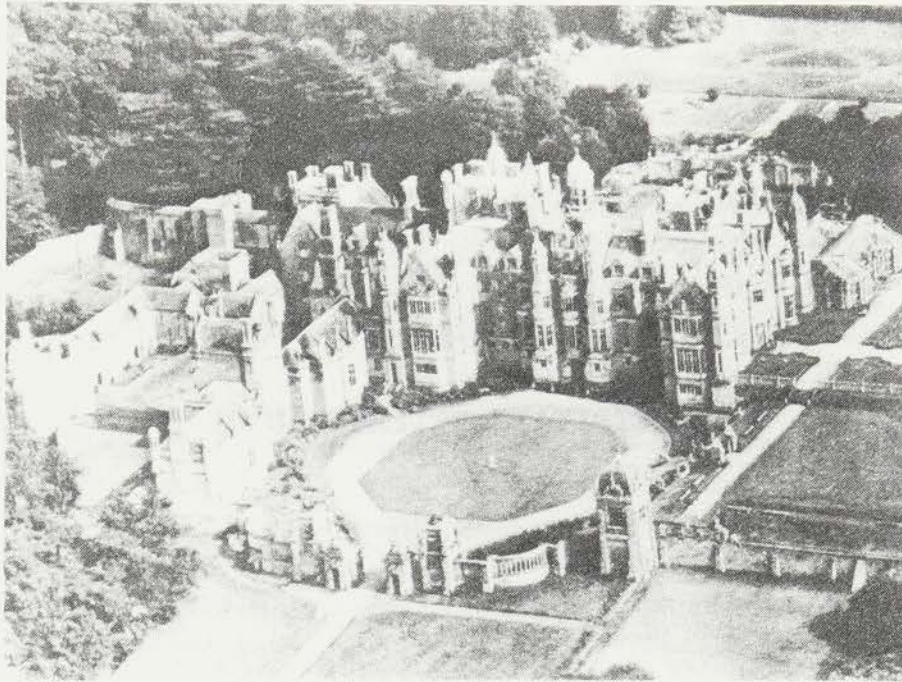
Clifford Memorial Library was named in honor of Dr. and Mrs. George S. Clifford. It was erected in 1957. Dr. Clifford, called the father of the university, was the first Evansville man to suggest that the college be brought here. His wife was the first woman trustee.

### MCCURDY ALUMNI UNION BUILDING

McCurdy Alumni Union Building, built in 1951, was named in memory of William H. McCurdy. The lower level contains the Wooden Indian, games room, mailboxes for organizations, travel board and the Second Time Around Used Bookstore. On the first floor are Student Union Offices and other offices and rooms used by the students. The third floor houses the Guidance Center, Veterans Representative, Placement Office, and Faculty Lounge.



- |   |                                |
|---|--------------------------------|
| 1. Administration Hall                                    | 12. Greenhouse                 |
| 2. Clifford Memorial Library                              | 13. University Bookstore       |
| 3. Engineering-Science Building                           | 14. Campus Housing             |
| 4. McCurdy Alumni Memorial Union                          | 14A. Franklin House            |
| 5. Hyde Hall  | 14B. Bigney House              |
| 6. Shanklin Theatre                                       | 14C. Torbet House              |
| 7. East Classroom Building                                | 14D. Hovda House               |
| 8. President's House                                      | 14E. Hughes Hall               |
| 9. Krannert Hall of Fine Arts and<br>Wheeler Concert Hall | 14F. Hale Hall                 |
| 10. Carson Center for Health and<br>Physical Education    | 14G. Moore Hall                |
| 11. Power Plant and Maintenance                           | 14H. Brentano Hall             |
|   | 14 I. Morton Hall              |
|   | 15. Campus Parking Areas       |
|   | 16. Nursing Education Building |
|   | 17. Harper Dining Center       |
|   | 18. Neu Chapel                 |



#### HARLAXTON COLLEGE

In addition to its main campus, the University of Evansville owns and operates the Harlaxton Study Center at Harlaxton College in Grantham, England. The Study Center, located in Harlaxton Manor, first opened its door to University of Evansville students in 1971. Harlaxton Manor is a completely modernized Victorian estate built in 1837. It houses and provides classrooms for one hundred or more students and is located on approximately one hundred acres of rolling countryside.

UNIVERSITY STATISTICS



## UNIVERSITY ENROLLMENT

Undergraduate	4361
Graduate	537
Total	4898

## CLASS STANDING

Non-degree	574
Freshman	1672
Sophomore	769
Junior	673
Senior	673

## SCHOOL OF BUSINESS ADMINISTRATION

Undergraduate	650
Graduate	153
Total	803

SCHOOL OF BUSINESS ADMINISTRATION



## THE SCHOOL OF BUSINESS ADMINISTRATION

As early as February, 1920, the University's first president, Dr. Alfred Hughes, spoke of the need for a department of business administration to provide a four-year course--"not just courses in typewriting and shorthand, but a complete course in finance, banking, business management and the larger problems of modern business." It was not until the fall of 1922 that such a curriculum was offered. For the fall of 1922 nine courses were listed under the heading of economics and business, but the announcement for 1923-24 included a department of business administration as a separate and distinct section of the catalog with twenty-seven courses outlined as well as a course of studies for business majors for each of the four college years. One-half of a student's time was devoted to professional business studies with balance devoted to liberal arts studies. There was no provision for specializing; each business major took every one of the twenty-seven courses given.

The curriculum remained much the same until the reorganization of the college by President Harper in 1931. In 1931 Evansville College was granting eleven different degrees--the Bachelor of

Arts; Bachelors of Science in Business Administration, in Civil Engineering, in Education, in Electrical Engineering, in Mechanical Engineering, of Religious Education, of Industrial Science; and the professional degrees of Civil, Electrical and Mechanical Engineer. In the reorganization the semi-autonomous departments of engineering, education and business were pushed into the framework of the liberal arts college. Only two different degrees were granted after 1931, the Bachelor of Arts and the Bachelor of Science without a field of study designated. The degree of Bachelor of Science in Business Administration had been abolished, the last ones being given in 1931.

Sociology and economics (the title business administration was dropped in favor of economics) were combined into one department. The liberal arts requirements remained at one-half a student's total hours; however, the required number of business hours was reduced to one-third of the total. The remaining additional hours were to be from the social sciences. Sixteen years passed before the degree of Bachelor of Science in Business Administration was again conferred in 1947.

There were few changes in department requirements on offerings during the 1930's, except that in



1936-37 a four-year secretarial course was added. During this period also a curriculum in industrial science was outlined. It consisted of two years of engineering (which remained in the curriculum after the reorganization of 1931) and business subjects to be taken in the junior and senior years.

In 1946 as the veterans of WW II poured in, seeking a college education under the provision of the "G.I. Bill," the department underwent a major revision. Majors were established in economics, accounting, finance, management, marketing and secretarial science, and the degree of Bachelor of Science was restored. The curriculum was realigned with the requirement in business courses again equalling approximately one-half of the total required hours and the balance to be taken from the liberal arts areas.

With four different men heading the department in seven years, the first years of this department gave little evidence of the prominent place it would have in the development of the College nor of the prestige it would eventually achieve. The department was created in 1922 under the direction of Dr. Mitchell, the first Ph.D. graduate in business of the University of Chicago. He remained for three years, resigning in 1925 to

go to Lawrence College in Wisconsin. He was followed by John Watkins, an M.A. graduate of the University of Chicago. He remained for only the year 1925-26 and was succeeded by James R. Jackson.

Like the two men before him Jackson was a graduate of the University of Chicago. Also like the others his tenure was short, in his case two years.

Jackson resigned in 1928 to teach in St. Louis University. The fourth man to head the department and to round out the seven years was L. D. Thompson, also a University of Chicago graduate.

In 1929 Professor Dean Long, a member of the economics faculty of DePauw University, came to teach summer session--and stayed for thirty-eight years. He graduated from Simpson College in 1924 and from Harvard in 1926 with a degree of Masters of Business Administration. He was department head from 1929 until 1949, when he was named vice-president and director of adult education.

Long's service to the department, the College and the community was so extensive that one wonders how one man could have accomplished so much. The many elements of the College (now University) for which he worked so long and effectively--intercollegiate athletics, the Evening College, the Center for Industrial Relations, the engineering co-op

scholarship program, the Center for Advanced Study, the School of Nursing, his own department of business administration--all have grown to maturity and positions of permanence; and for this growth and maturity much of the credit belongs to him. He fully deserves the title given him by the newspapers of 'Mr. Evansville College'.

When Long became vice-president in 1949 and relinquished the headship of his department, he was followed by Paul R. Busey. Busey earned an M.A. degree in 1936 from the University of Illinois. In 1951 he was granted a leave of absence for additional graduate work. At this point Long resumed the headship, and when Busey elected not to return, Long continued until the appointment of Claude H. Slusher in 1955. A graduate of Virginia Polytechnic with a Bachelor's and Master's degree, Slusher remained until 1958, when he resigned to go to Carroll College in Waukesha in Wisconsin.

The eighth and final head of the department is Dr. Ray Arensman, a 1943 graduate of Evansville College, who earned a Doctor of Education (Business) from Indiana University in 1955. It is safe to call him the last head of the department because in 1968 the department became the School of Business Administration and Dr. Arensman was named its dean.



Under Dean Arensman's direction the School of Business advanced rapidly and became more clearly a professional school. He guided the school in the development of a graduate program leading to the degree of Master of Business Administration. The first M.B.A. was granted in 1970.

In 1972, after fourteen years of dedicated leadership (1958-1972), Dean Arensman retired from his position to assume a full-time professorship. Tom Lee followed as Dean of the School of Business and remained with the school for about two years. During the following year, Jerry Martin served as interim Dean before transferring to Eastern Kentucky University.

In September, 1975, Gary Lynch was unofficially named Dean of the School of Business Administration. Dean Lynch served as part-time Dean from September through December 1975 while teaching a full nine hour load at the University of Idaho. He arranged his class schedule so as to be in Evansville on alternate weeks Friday through Sunday and during vacations.

Since his official installation in January, 1976, Dean Lynch has implemented numerous changes and has vastly enhanced the professional demeanor of the School of Business. The most pressing



challenges facing Dean Lynch were the revision of the undergraduate and graduate curriculum and the need to bring faculty up to strength. The existing curriculum was broadened to better teach multiple basic business skills and a higher degree of specialization in a given discipline. Faculty positions were created to support the expanded program, and qualifications for all positions were reviewed and revised as needed. Since 1976, Dean Lynch has recruited twelve new faculty members.

Bachelor of Science and Associate of Science degrees are offered in business administration with the opportunity to specialize in these particular fields: Accounting, Economics, Finance, International Business, Operations or Personnel Management, Marketing, Office Administration and a number of special programs. A broad background in the humanities, arts and sciences continues to be an important aspect of the business curriculum. Classes outside the School of Business account for approximately one-third of the total required hours for graduation.

All business majors are required to take a common core of business and economics courses to insure adequate preparation in the basic skills of business administration. These lower level courses

must be completed satisfactorily before any student is granted the formal admission to candidacy that permits advanced course work.

To facilitate these changes Dean Lynch secured faculty input and approval on all revisions, changed the administrative structure of the School from five academic divisions with respective division heads to a more centralized structure of two academic divisions under the guidance of two assistant deans, and achieved better and more efficient scheduling.

In addition to these improvements, Dean Lynch has worked with the faculty to develop long-range goals and objectives, a constitution and by-laws for the School; a student advisory council of elected student representatives has been formed; and a feasibility study is being conducted to focus on the establishment of a co-op degree program for business students.

The outcome of Dean Lynch's vigorous restructuring has been the achievement of conformity with the American Assembly of Collegiate Schools of Business (AACSB) accreditation standards. A letter of intent seeking AACSB accreditation, in addition to accreditation by the North-Central Association of Colleges and Secondary Schools, has been filed

and the School has been visited by one of their consultants. Initial undergraduate accreditation is targeted for the 1981-82 school year.

Special Thanks to Ralph  
Olmsted, University  
Archivist

Wong Tai Agard  
Assistant Professor of Economics  
B.S., 1951, University of Kentucky  
Ph.D., 1955, Georgia Institute of Technology  
Ph.D., 1957, University of Georgia

Wm. J. Farnham  
Professor of Economics  
Ph.D., 1954, University of Mississippi  
Ph.D., 1959, Indiana University  
Ph.D., 1975, Indiana University

Wm. H. Hunt  
Professor of Economics  
Ph.D., 1951, Cleveland State College  
Ph.D., 1952, University of Michigan

Wynne Jones  
Assistant Professor of Economics  
Ph.D., 1958, Pennsylvania State University  
Ph.D., 1959, University of Kentucky  
Ph.D., 1974, University of Kentucky

**FACULTY**

Robert S. Kahan  
Professor of Economics  
Ph.D., 1951, Ohio State University  
M.A., 1950, Ohio State University  
B.S., 1949, Washington University

Robert S. Kahan  
Assistant Professor of Economics  
Ph.D., 1951, Ohio State University  
M.A., 1950, Ohio State University  
Ph.D., 1950, Washington University

James L. Smith  
Assistant Professor of Economics  
Ph.D., 1971, Miami University  
M.A., 1970, Miami University

David L. Smith  
Assistant Professor of Economics  
Ph.D., 1957, Ohio College  
M.A., 1955, University of Kentucky  
M.A., 1955, University of Kentucky



Mangi Lal Agarwal  
Assistant Professor of Management  
B.T., 1971, Indian Institute of Technology  
M.S., 1972, Georgia Institute of Technology  
Ph.D., 1976, University of Georgia

Ray W. Arensman  
Professor of Economics  
B.A., 1943, University of Evansville  
M.S., 1950, Indiana University  
Ph.D., 1955, Indiana University

Allen B. Bess  
Professor of Accounting  
B.S., 1950, Missouri Valley College  
M.A., 1951, University of Missouri

M. Gale Blalock  
Assistant Professor of Economics  
B.A., 1970, University of Arkansas  
B.S., 1970, University of Arkansas  
M.A., 1972, University of Arkansas

Robert W. Eckles  
Professor of Marketing  
B.S., 1951, Miami University  
M.B.A., 1959, Miami University  
D.B.A., 1970, Washington University

Robert W. Faust  
Associate Professor of Management  
B.B.A., 1961, Washburn  
M.B.A., 1963, State University of Iowa  
Ph.D., 1972, University of Iowa

James E. Garvin  
Assistant Professor of Finance  
B.S., 1971, Miami University  
M.B.A., 1972, Miami University

Frank L. Gile  
Assistant Professor of Finance  
B.A., 1957, Doane College  
M.A., 1960, University of Nebraska  
Ph.D., 1979, University of Illinois

Dale Hockstra  
Associate Professor of Management  
B.A., 1969, Occidental College  
M.S., 1970, Stanford  
Ph.D., 1974, Stanford

John J. Lennon III  
Assistant Professor of Marketing  
B.A., 1972, University of St. Thomas  
M.B.A., 1974, University of Georgia  
Ph.D., 1976, University of Georgia

Gary A. Lynch  
Dean, School of Business Administration  
B.A., 1960, St. Joseph's College  
Ph.D., 1970, Washington State University

Robert F. Martin  
Associate Professor of Business Education  
B.S., 1951, Indiana University  
M.B.A., 1956, Indiana University

Carl W. Minton  
Assistant Professor of Accounting  
B.S., 1965, University of Evansville  
M.B.A., 1972, University of Evansville

Dell P. Nussmeyer  
Instructor of Office Administration and Business Education  
B.A., 1966, University of Evansville  
M.A., 1970, University of Evansville

Millard L. Pace  
Associate Professor of Marketing  
B.S., 1956, University of Evansville  
M.A., 1965, University of Illinois

David B. Reeder, Jr.  
Associate Professor of Accounting and Finance  
B.S., 1962, University of Evansville  
M.B.A., 1964, Indiana University

Terrance Skantz  
Assistant Professor of Accounting  
B.S., 1972, University of Southern Mississippi  
M.S., 1973, University of Southern Mississippi  
Ph.D., 1979, Oklahoma State University

Robert P. Steel  
Assistant Professor of Management  
B.A., 1974, University of Cincinnati  
Ph.D., 1979, University of Tennessee

Clifford E. Stone  
Professor of Accounting  
B.S., 1939, University of Evansville  
M.B.A., 1958, Indiana University  
Ph.D., 1968, University of Iowa

Mau-Sung Tsai  
Professor of Economics  
B.A., 1954, National Taiwan University  
M.A., 1960, University of Oregon  
Ph.D., 1966, Southern Illinois University

Michael Zimmer  
Assistant Professor of Economics  
B.A., 1972, University of North Carolina  
M.B.A., 1973, University of Tennessee  
Ph.D., 1976, University of Tennessee

During the year of 1947, several students of the  
School of Business Administration of the University of Tennessee  
were interested in establishing a fraternity on campus. As a  
result, on October 11, 1947, Dr. Robert W. Fisher, a former law  
student, wrote to the International Fraternity of Delta Sigma Pi  
about establishing a chapter.

The month of January, 1947, was very busy for the six  
fraternal organizations. They were Delta Sigma Pi, Phi Kappa Phi, Sigma Xi,  
Delta Kappa Epsilon, Phi Lambda Theta, and Omicron Sigma. During this month  
the Gamma chapter of Delta Sigma Pi was organized at the University of  
Tennessee.

**BETA ALPHA EPSILON FRATERNITY**

at Knoxville was organized approximately, 1947. The University of  
Knoxville was assigned a permanent name in 1916 when Dr. Richard  
Homer Johnson was an administrator.

On February 6, 1947, Richard J. Tilley, Assistant Executive  
Director of Delta Sigma Pi, was with the executive members to  
organize them with Delta Sigma Pi.

Later, March 27, 1947, Delta Sigma Pi was the Delta Alpha  
Epsilon's constitution and charter were officially approved by  
the Grand Council. On April 1, 1947, Delta Alpha Epsilon accepted  
membership in Delta Sigma Pi. The members were then  
officially initiated into Delta Sigma Pi on May 1, 1947, at a  
fraternal banquet held at the Executive Inn.



## HISTORY OF BETA ALPHA EPSILON

During the month of October, 1976, several students of the School of Business at the University of Evansville saw the need to establish a professional business fraternity on campus. As a result, on October 22, 1976, Dr. Robert W. Eckles, a Delta Sig Alumnus, wrote to the International Fraternity of Delta Sigma Pi about establishing a chapter.

The month of January, 1977, saw many meetings of the six founders. They were Linda Agnew, Paul Anderson, Jennie Griffin, Dave Keever, Matt Lewis, and Annette Thomas. During this month the Greek name Beta Alpha Epsilon (for Business Administration at Evansville) was chosen temporarily, until the University of Evansville was assigned a permanent name. At this time Dr. Michael Zimmer joined us as an advisor.

On February 1, 1977, Michael J. Tillar, Assistant Executive Director of Delta Sigma Pi, met with the founding members to acquaint them with Delta Sigma Pi.

Sunday, March 27, 1977, marks the date that Beta Alpha Epsilon's constitution and charter were officially approved by Student Congress. On April 5, 1977, Beta Alpha Epsilon accepted twenty-eight pledges into the fraternity. The members were then formally initiated into Beta Alpha Epsilon on May 1, 1977, at a dinner banquet held at the Executive Inn.

The first election of officers was held on May 3, 1977, for the 1977-78 academic year. They were as follows:

President - Annette Thomas  
Senior Vice President - Mike Essig  
Vice President of Professional Activities - Rob Atkinson  
Vice President of Pledge Education - Beth Buening  
Treasurer - Paul Anderson  
Secretary - Paula Armstrong  
Chancellor - Olga Vasojevich  
Historian - Phyllis Moffatt  
Social Chairman - Ken Brinegar

Jennie Griffin, Annette Thomas, and Gerri Wittman attended the 31st Grand Chapter Congress of Delta Sigma Pi in Toronto, Canada, August 14 - 18, 1977.

On Thursday, November 3, 1977, the chapter was officially pledged by Mr. Michael J. Tillar.

The next election of officers was held on February 8, 1978, for the 1978-79 academic year. They were as follows:

President - Tom Mass  
Senior Vice President - Sherrie Broadhead  
Vice President of Professional Activities - Dave Keever  
Vice President of Pledge Education - Kathy Meth  
Treasurer - Don Meyer  
Secretary - Mary Gogel  
Chancellor - Paul Anderson  
Historian - Gaynell Fondong  
CEI Chairman - Gerri Wittman

The year was busily spent recruiting new members for the fraternity.

The officers currently in office were elected on February 14, 1979, to serve the 1979-80 academic year. They are as follows:

President - Don Meyer  
Senior Vice President - Rick Stuckey  
Vice President of Professional Activities - Karen Hoevener  
Vice President of Pledge Education - Ed Hauenstein  
Treasurer - Keith Schepers  
Secretary - Donna Kingery  
Chancellor - Doug Stewart  
CEI Chairman - Beth Dages



On March 21, 1979, Mr. Michael J. Tillar conducted a pledging ceremony for those members which had not been so previously.

Martha Finfrock and Karen Hoeverer attended the 32nd Grand Chapter Congress of Delta Sigma Pi in Atlanta, Georgia, August 12 - 16, 1979.

Beta Alpha Epsilon has been very busy during these years with many activities, both social and professional. Our professional activities have been many and varied. Tours have been taken of Merrill Lynch, Mead Johnson, George S. Olive, and a field trip to St. Louis consisting of General American Life Insurance Company, the Federal Reserve Bank, and Anheuser-Busch. Our fraternity has helped sponsor the Hulman Lecture Series on campus, bringing in speakers from outside the local community. Included in the list of distinguished speakers are Delbert C. Staley, President of Indiana Bell; C. Lawrence DuVall, Inland Steel of Chicago; and Clifford Hardin, Ralston Purina. Other speakers that we have brought on campus are John Holman from Indiana Bell and Judge Tom D. Capshaw. Plans are also in the works for a field trip to Marble Hill Nuclear Plant and Indianapolis, Indiana.

We also keep busy with raising money. Our first project was a dunking booth in which we used professors as bait. The money we raised was donated to the American Diabetes Association. The dunking booth was used a second time to raise money for Muscular Dystrophy. Other projects have included selling donuts and holding a raffle.

Besides being busy with our professional and money raising activities, we still find time to have fun. Some examples are a Christmas party and picnics at Audubon Park.





SCHOOL OF BUSINESS



**BETA**

**ALPHA**

**EPSILON**



American Diabetes Association  
Indianapolis Affiliate, Inc.

gratefully acknowledges  
your gift of

\$81.75

Your contribution  
and continuing support  
is sincerely appreciated

This contribution  
is tax deductible

**Dunk your profs**

Beta Alpha Epsilon is giving you the chance again this year to dunk the UE professors and staff. The BAE dunking booth will be set up in front of Carson Center on Wednesday, April 26 from 10a.m. - 5:30p.m. Look for signs listing the ¼ hour your favorite profs will be sitting in the booth. All proceeds will go to the American Diabetes Association.



STATE DEPARTMENT SPEAKER BYRON DOENGES  
LECTURE ON THE IMPACT OF IRAN AND AFGHANISTAN ON SALT II is Sponsored by:

The Indiana Consortium for International Programs & the University of Evansville Chapters of:

- Pi Sigma Alpha
- The Political Affairs Club
- Beta Alpha Epsilon



AIMS AND PURPOSES OF THE ALMA MATER

1. To petition for and establish a chapter of the International Fraternity of Delta Sigma Phi on the campus of the University of Knoxville.

2. To encourage scholarship among its members.

AIMS AND PURPOSES

3. To promote the study of literature and the arts of the University of Knoxville.

4. To promote closer affiliation between the members of the world and the students of the University.

5. To further development of standards of scholarship and culture, the civic and commercial values of the University of Knoxville, and the civic and commercial values of the community.

3

AIMS AND PURPOSES OF BETA ALPHA EPSILON

1. To petition for and establish a chapter of the International Fraternity of Delta Sigma Pi on the campus of the University of Evansville.
2. To encourage scholarship among the members.
3. To promote the study of business at the University of Evansville.
4. To promote closer affiliation between the commercial world and the students of business.
5. To further develop higher standards of commercial ethics and culture, the civic and commercial welfare of the University of Evansville, and the civil and commercial welfare of the community.

CHARTER MEMBERS

OUR FOUNDING FATHERS

Linda Agnew

Paul Anderson

Jennie Griffin

Dave Keever

Matt Lewis

Annette Thomas



Theresa  
Agnew



Jennifer  
Brown



Karen  
Buechler



Steve  
Buechler



Susan  
Cassidy



Donna  
Clipp



Randy  
Corley



Elizabeth E.  
Dages



Sandy  
Elliott





Martha  
Finrock



Rebecca  
Goforth

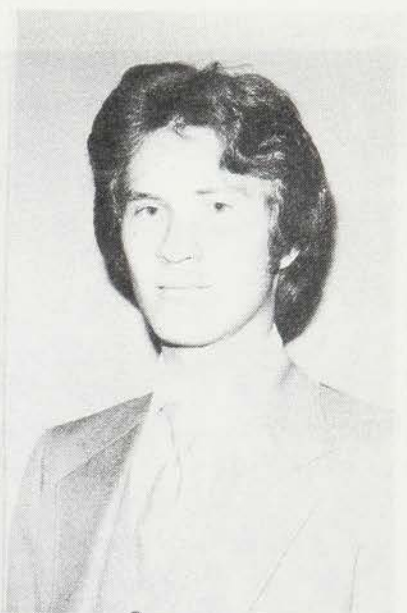
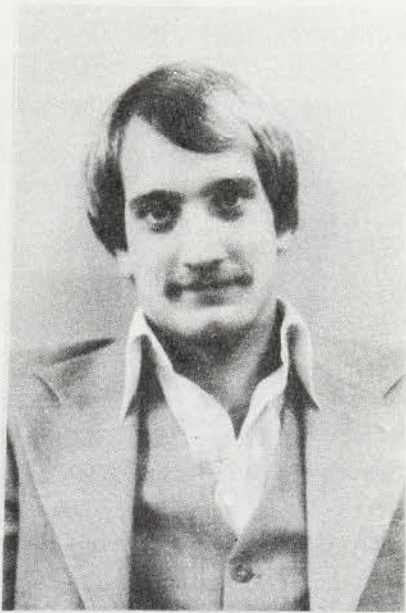


Karen  
Guagenti

Janet  
Hackenbracht



Bradley  
Harris



Ed  
Hauenstein

Ronda  
Hayes



Cathy  
Helping



Karen  
Hoeverer



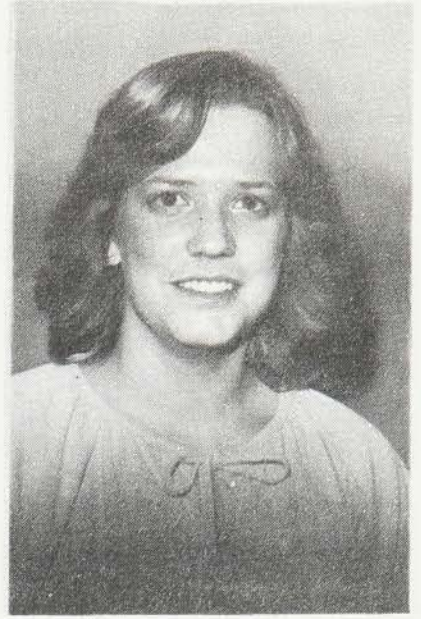
Carolyn  
Hoover



Gail  
Hopf



Sharon  
Hopf



Jed  
Hutson



Melitta  
Kessner



Donna  
Kingery



Eric  
Lee



Jamie  
Maier



Ellen  
Make

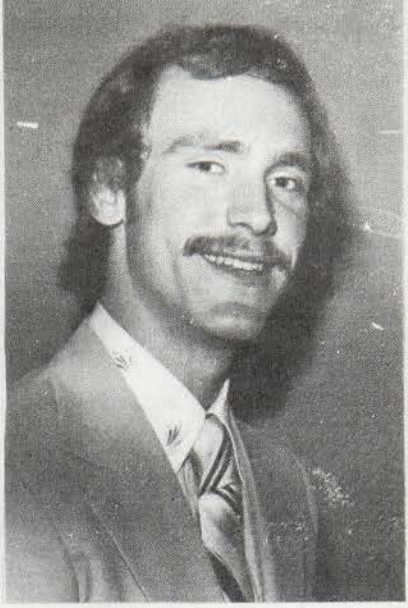




Barbara L.  
McKenzie



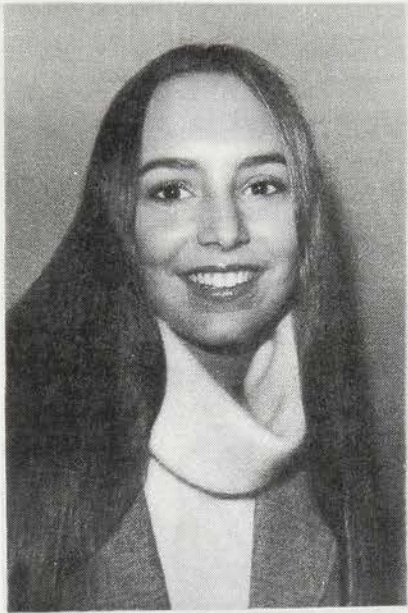
Donald M.  
Meyer



Alison  
Moffett



Susie  
Oswald



Jim  
Ozga



Dana  
Perkins



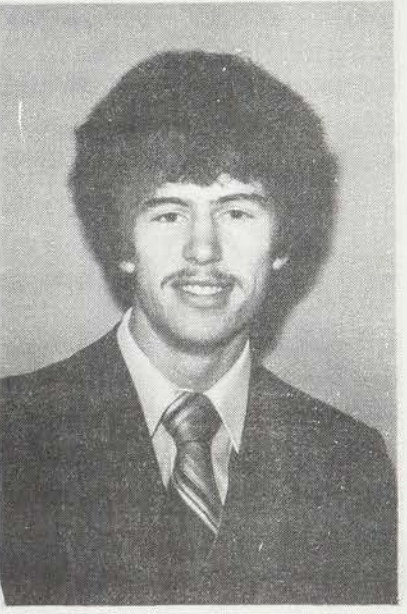
Kim  
Reed



Teri  
de St. Jean



Keith  
Schepers

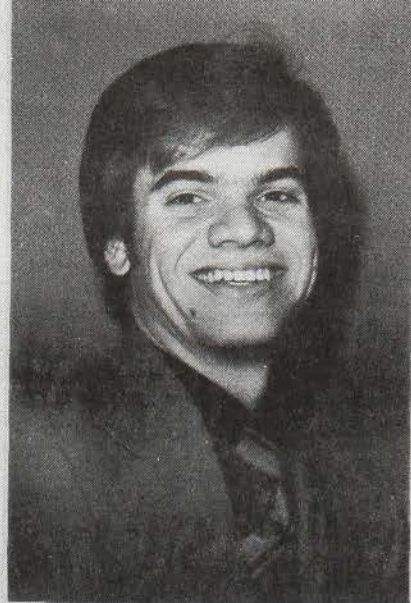




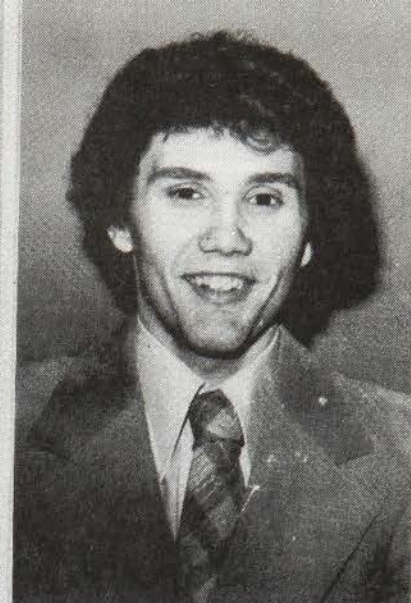
Melanie  
Seibert



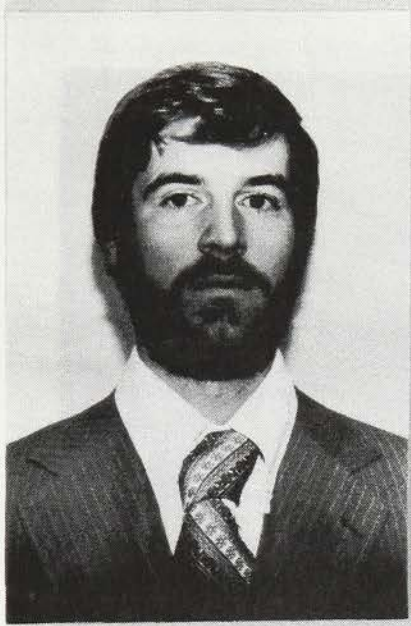
Rohn  
Shellenberger



Doug  
Stewart



Richard  
Stucky



Susan  
Taylor



Richard  
Trent



Rick  
Weger



Susan  
Worthington



Crystal  
Zimmerman





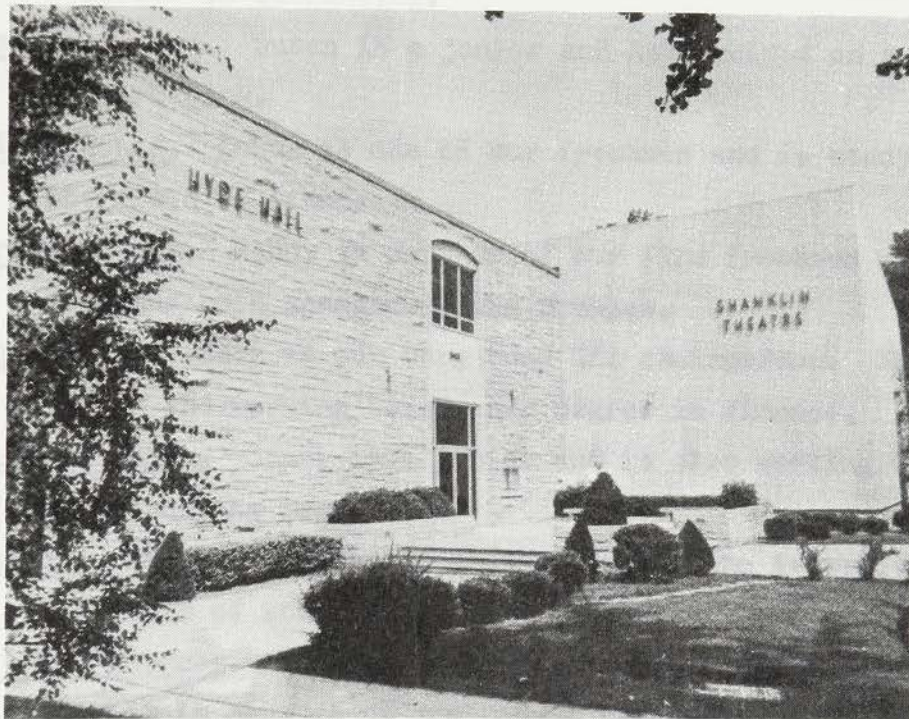
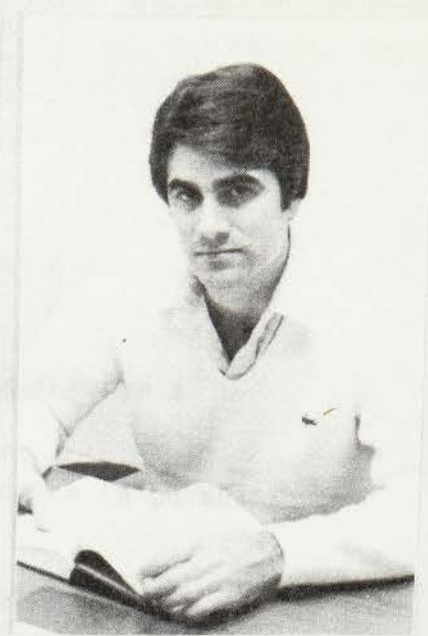
Diana  
Zivanovich



Dean Gary A.  
Lynch



Dr. Michael A.  
Zimmer



HYDE HALL

Hyde Hall honors the fifth president, Dr. Melvin W. Hyde. Built in 1967, Hyde Hall contains the School of Business Administration and the office of Business Administration and Economics. Also, located on the first floor are the Curriculum Center, Reading Center, School of Education, Shanklin Theatre and a small auditorium.

## MEMBERS

Agnew, Theresa. Theresa is a junior and is studying for a degree in production operations management.

Brown, Jennifer. Jennifer is another junior and she is pursuing a career in accounting.

Buechler, Karen. Karen is a sophomore and studying to be a CPA accountant.

Buechler, Stephen. Steve is a senior and is studying toward a career in accounting.

Cassidy, Susan. Susan is a junior and has decided on a career in marketing.

Clipp, Donna. Donna is one of our freshmen and is studying in the field of finance.

Corley, Randy. Randy is another of our fine freshmen and is studying both management and pre-law.

Dages, Beth. Beth is our very busy CEI chairperson. She is a senior and working toward her degree in finance.

Elliott, Sandy. Sandy is a junior and is also working toward an accounting degree.

Finfrock, Martha. Martha is another junior who is studying in the field of accounting.

Goforth, Rebecca. Rebecca is also a junior and she is pursuing degrees in management and communications.

Guagenti, Karen. Karen is a sophomore and has chosen to work toward a degree in accounting.

Hackenbracht, Janet. Janet is another of our sophomores and is studying for a career in music management.

Harris, Bradley. Brad is a junior and has chosen to study for a degree in marketing.

Hauenstein, Edward. Ed is our dedicated vice president of pledge education. He is also a senior and studying to be a CPA accountant.



Hayes, Ronda. Ronda is one of our many sophomores and is pursuing a degree in business.

Helpling, Cathy. Cathy is another of our sophomores who are studying to be an accountant.

Hoeverer, Karen. Karen is our vice president of professional activities. She is also a senior who is studying to become a CPA accountant.

Hoover, Carolyn. Carolyn is a freshman and is studying for a degree in accounting.

Hopf, Gail. Gail is another freshman who is also studying for an accounting degree.

Hopf, Sharon. Sharon is a junior and has chosen to pursue a career as a CPA accountant.

Hutson, Jed. Jed is also a junior and studying for degrees in accounting and pre-law.

Kessner, Melitta. Melitta is a sophomore who has chosen to be a marketing major.

Kingery, Donna. Donna is the hard working secretary. She is also a senior and studying for a degree in office administration.

Lee, Eric. Eric is a freshman who is pursuing a degree in the field of accounting.

Maier, Jamie. Jamie is one of our dedicated juniors and she is studying for a degree in finance.

Make, Ellen. Ellen is also a junior and is working toward a degree in marketing.

McKenzie, Barbara. Barb is a senior who has chosen the field of accounting in which to study.

Meyer, Donald. Don is the president of our group. He is a senior and studying to become a CPA accountant.

Moffett, Alison. Alison is a sophomore who is studying in both international business and marketing.

Oswald, Susie. Susie is another of our seniors and she is working toward a degree in international business.



Ozga, James. Jim is a sophomore who has chosen to study in the field of finance.

Perkins, Dana. Dana is a freshman who is working for a degree in accounting.

Reed, Kim. Kim is one of our seniors and she is studying for a degree in international business.

de St. Jean, Teri. Teri is another of our freshmen who are studying accounting.

Schepers, Keith. Keith is the treasurer. He is a senior and is also working toward a degree in accounting.

Seibert, Melanie. Melanie is a junior and has chosen to work toward a degree in accounting.

Shellenberger, Rohn. Rohn is another of our dedicated juniors and is studying for a degree in marketing.

Stewart, Douglas. Doug is our chancellor. He is also a senior and has chosen to study for a career in accounting.

Stucky, Richard. Rick is our executive vice president. He is another senior who is studying for an accounting degree.

Taylor, Susan. Susan is one of our sophomores and she is working toward a degree in accounting.

Trent, Richard. Rick is another of our dedicated juniors and is studying for his degree in accounting.

Weger, Rick. Rick is also a junior and he is working toward a career as a CPA accountant.

Worthington, Susan. Susan is another of our many juniors who are working toward an accounting degree.

Zimmerman, Crystal. Crystal is a sophomore and is also studying for a degree in accounting.

Zivanovich, Diana. Diana is one of our freshmen and she is studying toward a finance degree.

FACULTY ADVISORS

Michael A. Zimmer, Ph.D.  
Chapter Advisor

Dr. Zimmer has been an Assistant Professor of Economics at the University of Evansville since 1976. He joined Beta Alpha Epsilon as an advisor in January 1977.

He received his B.A. with distinction in Economics from the University of North Carolina and his M.B.A. and Ph.D. from the University of Tennessee where he taught classes in Economics, Principles of Time Series Analysis and Principles of Statistical Inference.

He has conducted research in the areas of economics of regulation, energy and migration and economic forecasting. His publications included papers in Midsouth Journal of Economics and Southern Economic Journal.

Robert W. Eckles, D.B.A.  
Chapter Advisor

Dr. Eckles was instrumental in the formation of Beta Alpha Epsilon in 1976. He was a member and is now an alumnus of Delta Sigma Pi at Miami University.

He has been a Professor of Marketing at the University of Evansville since 1973 and was a faculty member of the University of Missouri and the Universities of Northwest Missouri State and Southern Illinois for twelve years prior to his Evansville appointment. His B.S. and M.B.A. were received from Miami University (Ohio) and his D.B.A. from Washington University.

Prior to his academic appointments, he acquired several years of professional experience and has continued to serve in a professional capacity as a Marketing and Management Consultant.



Gary A. Lynch, Ph.D.  
Dean, School of Business Administration

Dr. Lynch has occupied the position of Dean and Professor of Economics since 1976. He is the occupant of the Edward J. Fehn Chair of Business Administration and was granted Academic Tenure through normal School and University Faculty channels as of the 1979-80 academic year. Prior to his appointment at the University of Evansville he acquired fifteen years of administrative and academic experience at the Universities of Iowa and Washington State. He received his B.A. with honors from St. Joseph's College in 1960 and his Ph.D. from Washington State University in 1970. Post-doctoral studies in Econometrics and Statistics were undertaken by Dr. Lynch between 1970 and 1975 at the Universities of Chicago and Washington State. He continues to be active in quantitative methods.

In addition to his responsibilities as Dean, he supervises the Center for Management Education and Services, coordinates the Hulman Lecture Series in Free Enterprise and is currently serving on the University's Task Force for Academic Planning.

His experience has been balanced relative to academic and business opportunities. He is

professionally involved in regional and metropolitan forecasting and has served as a consultant to the Chicago Association of Commerce and Industry, the Evansville Chamber of Commerce, the Indiana Arts Commission and the Governor of Idaho. He has presented speeches and papers before national and state organizations. His monographs appear in numerous professional publications.

Dean Lynch is active in Evansville's business and community affairs. He is on the board of directors of both Metropolitan Small Business Assistance Corporation and Junior Achievement of Southwestern Indiana and a member of the Executive Committee of Leadership Evansville, Active Corps of Executives, the Indiana Real Estate Education Advisory Council and the task forces of the Indiana Department of Commerce.